

A N N U A L R E P O R T

2002

BRNO UNIVERSITY OF TECHNOLOGY



# ANNUAL REPORT 2002



The annual report on BUT activities in 2002 is submitted as required by the University Act no. 111/1998 Coll. It has been drawn up with respect to the guidelines on the activities of a university in 2002 published by the Ministry of Education, Youth, and Sports of the Czech Republic. It provides the broadest public with data and essential results of all the activities that Brno University of Technology performed as part of the Czech and international higher education and research system.

Brno University of Technology  
Antonínská 548/1, 601 09 Brno  
e-mail: [vut@vutbr.cz](mailto:vut@vutbr.cz)  
<http://www.vutbr.cz>

**Brno University of Technology**

■ I. introduction	6
■ II. structure of BUT	8
■ III. composition of BUT bodies	9
■ IV. education	10
■ V. research and creative activities	14
■ VI. information and communication technology	16
■ VII. library information services	20
■ VIII. editing and publishing	22
■ IX. academic staff	24
■ X. international co-operation in education	25
■ XI. other BUT activities	28
■ XII. student care	31
■ XIII. university management	34
■ XIV. BUT development	35

■ XV. other data as required by the management board of public university	36
■ XVI. changes of internal regulations	37
■ XVII. activities of faculties and BUT departments:	
■ Faculty of Civil Engineering	38
■ Faculty of Mechanical Engineering	44
■ Faculty of Electrical Engineering and Communication	49
■ Faculty of Architecture	55
■ Faculty of Business and Management	60
■ Faculty of Chemistry	65
■ Faculty of Fine Arts	70
■ Faculty of Information Technology	76
■ departments	82
■ tables	97

## I. INTRODUCTION

6

In the clear language of figures, the present Annual Report of Brno University of Technology (BUT) tells us all about the university's development in major areas such as teaching, science and research, and other creative activities, co-operation with industries and public institutions, international relations, etc.

In 2002, the BUT development followed the guidelines given by the long-term mission statement, which embodying our credo, which is to provide education for anyone wishing to study at our university provided that they have the ability to cope with all the exacting requirements of a regular study. We are an institution that responds to the needs of society and interests of the young generation in modern programmes such as those of information technology. From this point of view, the establishment of a new Faculty of Information Technology (FIT) on 1<sup>st</sup> January 2002 with the rest of the Faculty of Electrical Engineering and Computer Science transformed into a Faculty of Electrical Engineering and Communication (FEEC) was an important event. After more than one year, one can already see that this was a step in the right direction, which, by its overall effect, has increased the demand for the programmes offered and extended our research opportunities, particularly in information technology and modern fields of electrical engineering and telecommunication.

During 2002, the university Computer and Information Services Centre (CISC) was substantially reorganized with a new development section established, which since then has put in a great deal of work designing a new university information system. This year for the first time, applicants could enrol through a new registration system, which has been working perfectly.

The events of the preceding year had fully justified the establishment of Centre of Sports (CS) and Centre for Education and Consultancy (CEAC) two years earlier. Last year, CS was the main organizer of the Czech Academic Games 2002 that continue the long tradition of Czechoslovak universiads. CEAC offers programmes that help promote the co-ordinated development of life-long learning at BUT such as internationally accredited education programmes in aviation. Both departments were of great help while integrating such activities at BUT.

Since 1<sup>st</sup> January 200 BUT has had eight faculties. Due to the number of new programmes, BUT now has the most varied profile of courses offered among the Czech technical universities including technical, economic, and both pure and applied artistic fields. This is an ideal breeding ground for the emergence of multi-disciplinary programmes or fields such as mechatronics, materials engineering, biomedical engineering, biochemical engineering, industrial design, combined fields of technology and management, information technology and business, and the like, with some of them initiating further scientific and research activities. The fact that BUT graduates are increasingly in demand and have no difficulty finding their jobs proves that the system of education adopted by the university is well-conceived with good outlooks.

Speaking about the development of a modern university at present, one cannot overlook the European dimension of education, which is even more imperative for Czech universities in view of the country's expected EU accession. In compliance with the Bologna declaration, we are in the process of introducing a three-tier consecutive system with Bachelor's, Master's, and doctoral degree studies. Corresponding programmes have already been introduced at the faculties of architecture, fine arts, business and management, and chemistry with the faculty of information technology joining their ranks in 2002 and preparations for accreditation being under way at the faculty of electrical engineering and communication. The student and staff mobility, mostly with European countries, has been on a steady increase.

Research and other creative activities remain our focus. The Research Designs submitted and Research Centres established have had their positive influence with the new research teams created having an increased proportion of doctoral students and doctoral graduates. All the research activities acquire a more long-term and purposeful nature. The number and total volume of successful grant projects both domestic and international of all categories testify to the significant place that BUT holds among the Czech universities with good scores on an international scale as well.

For a university such as ours, maintaining good ties with industries and public institutions is of key importance, the co-operation taking the form of joint participation in various grant projects or direct co-operation given by contracts. It is my conviction that in this field, BUT can significantly contribute to the innovation of engineering projects thus improving their competitive edge internationally and helping the national economy. The design of a new VUT-100 tourist plane for four to five passengers, with a prototype already manufactured, can be taken as a good example of such co-operation.

Building a university is a long-term project whose quality, in a large measure, depends on the joint efforts of all those who work on it. In the entire history of BUT, this has been and, no doubt, will be a task for entire generations. I am convinced that the last year 2002 has brought our alma mater another step forward.

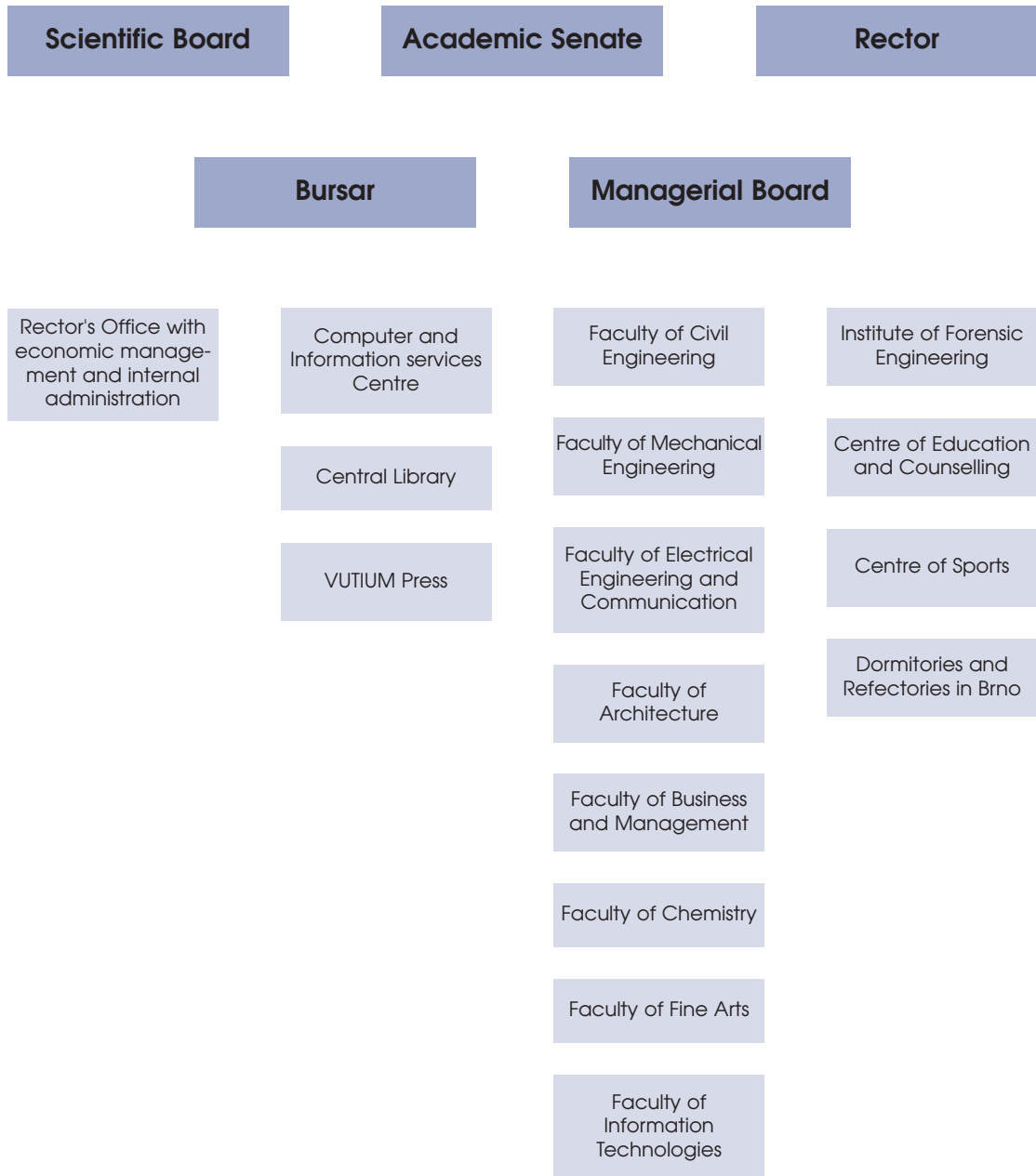
In Brno, on 7<sup>th</sup> April 2003

Prof. RNDr. Ing. Jan Vrbka, DrSc.  
Rector of BUT



## II. STRUCTURE OF BUT

8



### III. COMPOSITION OF BUT BODIES

9

The Academic Senate, Rector, and the Scientific Board are BUT's self-governing bodies. The Managerial Board and Bursar are other bodies.

Details of BUT's bodies are shown in Tables III.-1 to III.-4.

### **Programmes**

A total of 42 Bachelor's, Master's and Doctor's degree programmes were accredited at BUT's eight faculties in 2002 ranging from the classic engineering and new interdisciplinary fields that combine engineering with scientific disciplines or economics to architecture and arts (Tables IV. - 1a, 1b).

The programmes at the Faculties of Architecture, Business and Management, and Fine Arts were successfully re-accredited. A new Chemistry and Technology of Foodstuffs Bachelor's degree programme was accredited at the Faculty of Chemistry. The accreditation of the Mechanical Engineering Bachelor's degree programme offered at the Faculty of Mechanical Engineering was extended by the Mechatronics study field.

At the Faculty of Information Technology, established on 1<sup>st</sup> January 2002 and at the Faculty of Electrical Engineering and Communication, established on the same date by transforming the Faculty of Electrical Engineering and Computer Science, the academic year 2002 applicants were admitted to the newly accredited Information Technology Bachelor's degree programme and the Electrical Engineering, Electronics, Communication and Control Technology programme.

The preparation and development of new programmes were supported by development and transformation programmes of the Czech Ministry of Education (see Table IV. - 7) and projects of the University Development Fund (Table IV. - 8).

All the BUT faculties have introduced an ETCS compatible credit system.

### **Students**

A total of 15,740 students enrolled at BUT on 31<sup>st</sup> October 2002 – 3,210 in Bachelor's degree, 9,339 in Master's degree, and 1,490 in follow-up Master's degree, and 1,701 in doctoral programmes (Tables IV. - 2a, 2b, 2c). In 2002, 15,090 students studied at BUT.

Among the drop-outs (See Tables IV. - 3a, 3b) were mostly students that abandoned their studies after the first year. It is traditionally the highest for technical programmes, which are seen as more difficult by the students due the structure of the applicants and their insufficient mathematical and physical background from secondary schools, which certainly is a necessary basis for a successful and quality study of technical fields.

Numbers of graduates are shown in Tables IV. - 4a, 4b, 4c, 4d. A promising tendency is the increasing number of doctoral graduates mostly at the Faculty of Mechanical Engineering, Faculty of Civil Engineering, and Faculty of Business and Management.

Table IV. – 9 gives an overview of the scholarships granted and prizes awarded while Table IV. - 10. lists the Rector's and other awards.

## **Admissions**

A total of 15,048 candidates applied for study at BUT in 2002. The total number of those admitted amounted to 7 868, of which 4,983 actually enrolled (Tables IV. - 5a, 5b). Out of those not admitted, 921 asked for reconsidering the rejection verdict. In 121 cases, the Dean of the relevant faculty changed his decision mostly because of new vacated study places and admitted the formerly rejected applicants. The greatest number of appeals were submitted at the Faculty of Business and Management.

The actual demand for study considerably varied from faculty to faculty. Traditionally, economic and managerial programmes were in the greatest demand. On the other hand the demand for engineering disciplines still does not match their importance and cannot make up for the lack of young experts with this kind of education. Among those applying for the study of technical disciplines, the proportion of "gymnasium" (general secondary school) graduates is constantly decreasing (out of the 9,294 candidates applying for civil engineering, mechanical engineering, electrical engineering, and chemistry, 29.7% graduated from a general education secondary school, 58.6% from vocationally-oriented secondary schools and 11.7% from other schools) while the percentage of those who graduated from other schools that do not focus on preparing for university study increases. All the faculties make a great deal of effort to win quality students. Among the most significant activities towards this goal was, next to the days of open doors at BUT faculties, the presentation at the GAUDEAMUS university educational fair. Visits of teachers and students to secondary schools have also proved to be very efficient.

## **Student Creative Activity**

Research and creative activities of Bachelor's and Master's degree students and particularly the doctoral students are of considerable importance and traditionally supported at BUT. Student conferences and competitions are organized in different forms at all BUT faculties. These activities are described in some detail in the reports by individual faculties.

## **Student Appraisals**

All the faculties with the exception of the Faculty of Architecture held anonymous questionnaire enquiries for students to give their opinion on their curricula and teachers. When organizing and evaluating the enquires, the faculty managements co-operate with student organizations. At the faculties with a strong artistic component and individual approach to

study and students (Faculty of Architecture and Faculty of Fine Arts), the students appraise their teachers mainly by choosing the studios and thus also the teachers. This method provides a very good feedback as well.

### **Lifelong Learning**

Next to the accredited programmes, BUT offers lifelong learning programmes. Professional courses intended mostly for former BUT graduates as well as amateur courses such as the University of Third Age are organized.

The total scope of the lifelong learning at BUT in 2002 was 8,074 lessons in 94 courses and programmes of lifelong learning attended by a total of 3,005 students (see Table IV. - 6). The proportion of the lifelong-learning courses in 2002 as compared with the regular accredited courses was 19,9 %. Almost 34 % of the lifelong-learning courses in 2001 were offered on the basis of accreditation by a foreign university, a professional association or some other external organization.

As far as the teaching form is concerned, 64% of the lifelong educational programmes and courses took the form of full-time study, 9% were organized as distance-learning courses, and 27% were combined distance and regular courses.

### **University of the Third Age**

In 2002, the BUT University of the Third Age began its third year. A total of 106 students started their third year of a structured study consisting of 8 specialized courses.

A second round of U3A courses was launched at BUT with 140 senior students. The BUT university of third age offers its first-year courses every second year.

Both beginners' and advanced computer courses were opened in both semesters. Four such courses ran in parallel in the spring semester and five in the winter semester. A new Internet Technology open course type was introduced. The courses were attended by a total of 134 senior students.

In 2002, BUT was granted 460 thousand CZK by the Czech Ministry of Education in support of the second year of the „Development Of a Technically-Oriented U3A " programme. This programme is to be extended into 2003.

Based on an offer by ZAWIW, a centre for further education, which is part of the University of Ulm in Germany, the BUT Centre of Education and Consultancy joined a Socrates-Grundtvig 2 European Competence Network project designed to help the senior citizens access the Internet. The project is planned for three years.

Based on a decision of the general meeting of the universities of the third age of the Czech Republic, the centre of the Association Of Universities Of the Third Age was moved to Brno from Prague. Prof. Ing. Petr Vavřín, DrSc. was elected president of the Association Of Universities Of the Third Age.

## V. RESEARCH AND CREATIVE ACTIVITIES (RESEARCH AND DEVELOPMENT)

14

In 2002 the research and creative activities of BUT staff intensified and the proportion of doctoral students involved in these activities rose. As a result of the positive development in institutional research financing, new research teams had been stabilised within Research Centres and Research Designs. The fact that the average age of these teams had been cut down to about 32 years is a very positive sign. Like in the preceding years, the research and creative activities of BUT academic staff focused on three major areas. The first one covers general research, which receives funding mainly from the research programmes of the Czech Ministry of Education. Twenty research designs were worked on at BUT in 2002 (see Table V. - 3) and BUT was the organizer of one centre and a co-organizer of another two together with the Czech Technical University in Prague (see V. - 4). The second area involves specific research that includes projects funded by the Czech Grant Agency and the grant agencies of individual ministries, particularly the ministries of industry and trade, transport and communications, culture, and foreign affairs. Finally, specific applied research, which is funded on the basis of agreements with Czech and foreign industrial enterprises, forms the third area.

The funding from institutional resources of general research in 2002 could be raised to 1/5 of the subsidy received for education. This means an increase in this category of almost 90% on the year 2001. Creative activities received a funding of 91,03 million CZK. The faculties received 75.26 million CZK as normative funding and 15,77 million CZK as non-normative funding (IT, databases, Research and Art Fund, support of implementation projects). In addition, BUT received another 116,042 million CZK for research designs (see Table V. - 3). As every dynamic institution, even with the upward trend achieved, BUT has to keep abreast with rival universities, the Czech Technical University in Prague and Masaryk University Brno in the first place. In this regard, we reached a rate of growth that is slightly higher than that of MU. Compared with the Czech Technical University in Prague, our growth rate was lower due to less research centres established.

The numbers of BUT grant projects and the total amounts of funding won in grant competitions supporting specific research are shown in Tables V. - 1, V. - 2, V. - 8 a - c, and V. - 10. The number of projects was up 7,6% on the year 2001 and the total funding rose by 27.1%. It should be stressed that, in this area, there are big differences between the faculties. These are given by the different faculty sizes as well as by substantial differences in the structure of funding resources, in the average grant sizes, and, above all, in the different proportions of research staff acting as the heads of grant projects. In this respect, the situation at the Faculty of Mechanical Engineering could be seen as very good because there was a large number of researchers taking part in the projects. The situation was much better at the Faculty of Chemistry where the number of those receiving grants had increased and young research workers and doctoral students had become much more successful in winning funding of their research projects. Unlike other Czech universities, BUT could prove a very high proportion of funding received in applied

research from the ministerial grant agencies, mostly that of the Ministry of Industries and Trade. This testifies to an increasing tendency to use the outcomes of the basic research in practice. As in the previous years, the highest rate of success was achieved with the grant agencies of the Ministry of Industries and Trade and the Ministry of Transport and Communications. Here the faculties of mechanical, civil, and electrical engineering, and chemistry were the best.

The efforts to improve the transfer of the research results into the industrial practice had led to reorganizing the Technology Transfer Department. In 2001, the activities of the Regional Contact Organization for the South Moravian Region (RCO) (together with BIC Brno and Chepos Brno) were fully deployed. A number of events took place to inform and provide consultancy, a database of entities was established and inventory was taken of the research results that BUT was able to offer to industrial enterprises in the region. BUT will be submitting a new project to extend the activities of the RCO. However, this project will co-operate with partners different from those of the present one (Centre of Transport Research and South Moravian Innovation Centre).

Another activity related to the transfer of new technologies and innovative business was the work initiated on the establishment and putting into operation of incubators for starting businesses. BUT had also become involved as a leading force in the preparatory work for the application of the regional innovation strategy, which should lead to the establishment of a South Moravian Innovation Centre and of IVUT, s.r.o., a company of which BUT will be the sole founder and which should participate in the operation of the incubator. Important were also BUT's activities in the area of student e-business innovative undertaking. The BUT RCO together with First Tuesday organized the world's first „First Tuesday Academic" where more than 300 students from BUT and other Brno universities met with financiers and successful businessmen to learn from their experience. The 2002 event was the third in succession. Regarding technology transfer, BUT has now become the forerunner in the innovative business within the region and, in the years to come, should assist Masaryk University and other universities in the South Moravian region in commercialising research results.

A list of publications of BUT staff is shown in Table V. - 9. Relatively little information is provided about the engineering and artistic projects actually implemented. Measures will have to be taken to make the assessment of engineering implementations more objective and to enable at least partial categorization of creative activities.

Further information can be found in Tables V. - 5 to V. - 7.



## VI. INFORMATION AND COMMUNICATION TECHNOLOGY

16

In 2002, the communication infrastructure of the BUT backbone network was enhanced by a new gigabit technology. A new three-tier Apollo application technology had been developed for the BUT information system. This new technology will be used in 2003 to develop a new STUDIS teaching database system, which is to replace the Student system based on the Progress platform and later also the existing research database. A new portal technology was developed used as the base for a system of electronic enrolment successfully employed at the Centre of Sports. At the end of 2002, this technology was also used to develop an electronic application system for study at BUT.

### **BUT network infrastructure**

#### **Gigabit backbone network (Table VI. – 1)**

When the BUT backbone network was extended in 2002, the concepts of building a BUT Gigabit Backbone Network extending from 1999 to 2003 were pursued. According to these concepts of a new backbone network, the existing ATM 155 Mb/s technology used by the Brno metropolitan academic network from 1995 was to be replaced. The ATM technology was completed by backup Ethernet 10 Mb/s circuits (optics, radio links).

The present concepts used for building the BUT backbone network are based on ten years' experience and the following facts:

- IP Version 4 is the main protocol used,
- Ethernet is used for data transfer,
- the backbone routes transfer data at a rate of 1 Gb/s with a possibility of reaching 10 Gb/s in the years 2003/2004,
- 3 switching is used for routing,
- the backbone elements must enable IP-packet filtering by address, protocol, and application (TCP/UDP port).

Within the new Gigabit backbone network, all the BUT localities are connected at a minimum rate of 1 Gb/s and, along the most busy routes, the rate has been increased to of 2 Gb/s by joining two 1 Gb/s circuits. The backup connection to CESNET2 (a Czech national network for science and research) has been enhanced to 1 Gb/s. Large localities at Technická 2, Veverň 95, and Antonínská 1 have been equipped with new modular BlackDiamond switches that can further be enhanced to suit the needs of the faculties. At smaller localities L3 switches have been installed of type Summit 1 (8 gigabit ports), Summit 5 (16 ports) and Summit 7 (32 ports).

Apart from BUT faculties, the connection of a student network at the BUT halls of residence has also received a considerable attention. New power Summit 7 switches (32 gigabit ports) have been installed at the Pod Palackého vrchem, Purkyňovy, and Listovy halls of residence.

## Building the infrastructure of optical routes in 2002

Because of the capacities of the existing routes being no longer sufficient and new circuits needed, the following optocable routes were laid. The localities being connected with a sufficient number of optical fibres, a network topology could be chosen to secure sufficient circuit redundancy, which was reflected in a more reliable network with a larger capacity.

route		length	number of fibres	note
Údolní 53	Údolní 19	0,9 km	16xMM/32xSM	underground line, cunette put in 2001
Údolní 19	Gorkého 13	0,6 km	16xMM/32xSM	
Gorkého 13	Rybkova 1	1,3 km	16xMM/32xSM	
Rybkova 1	Veveří 95	0,6 km	16xMM/32xSM	
Palackého 1/3	Botanická 68a	work started		underground line – only cunette (part of Antonínská 1 – Botanická 68a – Palackého 1/3 – Božetěchova 2 route)
Veveří 9	Kounicova 67a	work started		underground line (initial part of the line connecting buildings B and D at Veveří 95)

In 2003, work on the Božetěchova 2 – Palackého 1/3 – Botanická 68a and Veveří 95 – Kounicova 68a routes should be finished and the Fast Žižkova connection reconstructed. Next the Božetěchova 2 – Mánesova 12 – Purkyňova 118 should be reinforced by replacing a cable.

## Telephone networks at BUT

In 2002 the BUT telephone exchange was upgraded to connect directly with mobile-phone operators thus replacing the problematic GSM gates. As first, the Eurotel CO-NEX 36 service was introduced. Also direct calls from the Eurotel to the BUT network were enabled by dialling 726.81 plus extension.

Negotiations were started with RadioMobil for T-Mobile Direct, a similar service to replace the existing 5 GSM gates. The prefix 604.07 has to be dialled followed by an extension to call from the T-Mobile network.

Using such direct connections, calls could be made from the BUT network to the network of mobile operators and, vice versa, from the mobile network to BUT extensions as if the call had been made within the mobile operator's own network.

For calls to the Oskar network of Český mobil 2 GSM gates were used.

During 2002, the VoicelP Cesnet service with prefix 0\*8 was successfully operated to enable Internet calls. Thanks to this service, free calls to many Czech universities were possible and calls to remote fixed-line telephone nodes at the price of a local call. For 2003 cheap international calls are being prepared.

### **BUT Information system**

#### **New technology: BUT Information Centre**

For the BUT Information System, a new three-tier Apollo technology was developed in 2002. This technology would serve as a user interface for a BUT Information Centre central data warehouse.

### **BUT Internet Portal**

A new Internet portal technology had been developed to run a university-wide electronic sports registration system at the BUT Centre of Sports. At the end of 2002, this technology was also used to prepare an electronic BUT study application system.

### **Economic electronic system**

The preparation for a new economic system was organized by several universities using the EkonFIS system for which the licence was about to expire. In the course of several months the system had been put to rigorous tests to see whether it could meet the demanding requirements of an economic system run at a university. The new economic system would cover the following areas:

- payroll, personnel, human resources
- economics, financial accounting
- logistics, property, inventory
- projects, grants, business activities

### **The original Brutis IS interface**

Mambo (formerly referred to as eBrain), the existing Brutis IS technology is maintained and developed by an external company in co-operation with Computing and Information Services Centre and faculty staff. This technology also forms the platform of the present R&D database. This received further support. In the years to come, it will be used:

- for information systems at faculties
- for a quick prototyping of new products
- as a data resource of the BUT portal
- to pass data to the centre in a XML format from satellite data warehouses of some faculties
- to communicate with external entities in a ZML format

### **Operation and information systems**

Operation and information systems were integrated into a Central Data Warehouse in the course of the year. These included:

- MENZA system for recording meals taken and subsidies granted
- ISKAM accommodation systems
- BUT personal pass registration
- basic data
- telephone calls
- debtor database
- book-sale subsidies

## VII. LIBRARY INFORMATION SERVICES

20

The BUT libraries are being developed in two directions. By extending the existing libraries to increase the number of study places and improve their equipment as well as by providing both the classic and electronic sources of information with related services. Both these directions join in an information highway, which seems to be inseparable from the university environment.

In 2002, an extensive reconstruction began of the Library and Information Centre of the Faculty of Civil Engineering, which, when finished by mid 2003, should improve the user comfort as set out in the libraries' mission. The library at the Faculty of Architecture was also extended in 2002 with the interior of the study rooms being thus markedly improved.

Electronic information sources were made available in 2002 using the following means:

- at BUT libraries: Czech national bibliography, economic and legal EPIS system, Bookfind, Ulrych's on Disc, MathSci, Beilstein, Encyclopedia of Mathematics, and other library-specific databases,
- at the entire BUT campus (that is on all the PC's at BUT) within the same scope as last year, thanks to projects supported by grants from the Czech Ministry of Education. A list of electronic information sources with direct access and instructions for work with them can be found at <http://www.vutbr.cz/library>,
- at the end of 2002, the offer was extended by an IEEE Computer Society digital library.

Bibliographic as well as full-text information databases in the present form are available to information institutions until the end of 2003 when the four-year "Information Sources for Research and Development" Ministry of Education programme will be finished. Thanks to this programme, the academic sphere in the Czech Republic could get to grips with the stormy advent of information technologies in research and development. Due to the broad range of electronic information sources and subsidies it has offered, the research institutions today have access to scientific information comparable to that of similar institutions in the advanced countries. A continuation of this programme seems to be the only chance for the costly information sources available today to be further maintained and updated.

The statistics of the usage of electronic information sources in support of research and development are being continually evaluated.

The task of libraries also includes the implementation of training programmes for work with these often unique information sources.

In 2002, an Association of University Libraries was established. Brno University of Technology had declared support to this initiative and became a member. The programme declaration of the association stipulates the following objectives:

- to represent university libraries in such negotiations as concern the concepts and fulfilment of the national information policy and national library system,
- to defend and support the interests of university libraries in negotiations with organisations operating in the area of communication and information technologies particularly with the producers and distributors of information sources,
- to create a basis for co-operation (development, education, quality improvement, problem solving, etc.) both at a national and international level.

For additional information see Table VII. - 1 to VII. - 4.

## VIII. EDITING AND PUBLISHING

22

In 2002 the university published 241 titles ranking again among the largest Czech publishers of professional literature. This is mostly accounted for by the largest faculties such as the Faculty of Electrical Engineering and Communication Faculty of Mechanical Engineering, Faculty of Civil Engineering, but also the Faculty of Business and Management and the VUTIUM Press, which since 1996 has been co-ordinating the university's editing and publishing activity. The BUT professional literature publishing scheme was continued in 2002 with each faculty publishing mostly conference proceedings and textbooks for its students. VUTIUM Press published titles in various editions covering a broad range of specialised subjects in textbooks, monographs, scientific papers, and special-occasion prints. The Scientific Writings edition established in 1998 to support research and present original scientific papers is among the most important ones. The scientific writings are edited in three series:

- Series 1 – Ph.D. thesis – doctoral theses
- Series 2 – Habilitation and inauguration lectures
- Series 3 – Monographs of Brno University of Technology

In Series 1, 165 volumes and in Series 2, 107 volumes were published. Apart from ISSN numbers, the volumes in both editions were also assigned ISBN numbers.

Both editions are also published in electronic format. On the VUTIUM web sites, both editions are regularly displayed in pdf format. Thus visitors can view any of the publications or its part with a printing option. A single volume was published in Series 3 with another two in preparation.

Electronic publishing was also used to publish Series 2 lectures, abridged versions of doctoral theses and BUT News, the BUT monthly. In co-operation with Minolta, print on demand is offered for selected textbook titles. Model chapters were prepared for the Physics multimedia textbook.

A new Quantum edition, featuring standard works was among the important events in publishing (works by E. Schrödinger, E. Nagel, and J. R. Newman are being prepared). The Brno Centre of European Studies participates in this edition as well as in editing Thoughts for the New Millennium, a prestigious collection of reflections by prominent personalities both in Czech and English versions. Doc. Ing. Ivan Havel, CSc., Ph.D. held a lecture to inaugurate the book.

VUTIUM co-operated with various other editors: with the Brno universities it co-edited a collection entitled Universities as a catalyst of the region's economic development, for the Compostela Group of Universities it prepared two publications together with Masaryk University.

Within the Czech stands at the international book fairs at Frankfurt am Main, Paris, and Bratislava, VUTIUM presented the BUT total production. It organised another joint exhibition of 13 universities at the Prague book fair where a university production database was presented.

VUTIUM's editing and publishing activities were so successful due to the transparent system distributing activities between the university as a whole and individual faculties and thanks to the funding by its industrial partners.

For further information see Tables VIII. and VIII – 1.





## IX. ACADEMIC STAFF

24

BUT academic staff and its qualification is listed in Table IX.-1 with the data further broken down by BUT faculties and departments in Table IX.-2.

The age structure of the staff is shown in Table IX.-3 and its further division between full-time and external employees can be found in Table IX.-4.

### **BUT Participation in the EU education and vocational training programmes**

#### **Socrates/Erasmus – second stage of the programme for 2000/2006.**

Student and teacher mobilities are decentralised activities (managed by the National Socrates / Erasmus Agency in Prague). They are financed from two budgets – the EU funds (about 1/4 of the total amount) and the Ministry of Education funds. Contributions to study stays can be divided into three categories depending on the cost of living in each country ranging from 410 to 470 EURO per month with the average grant amount of 450 EURO per month remaining the same. The contribution for one-week stays of teachers is 480 EURO. The number of out-going students and teachers went up on the previous academic year – see Table X. - 3.

The average length of stay of a student at a foreign university in the academic year 2001/2002 was 5.8 months with an average contribution of 81 thousand CZK. The average length of stay of a teacher abroad in the academic year 2001/2002 was 1.76 weeks with an average contribution of almost 23,000 CZK.

Table X. – 3 summarizes the stays actually realized.

**Preparation visits** – 3 preparation visits took place – see Table X. - 4 – resulting in signing 2 bilateral agreements, 5 framework agreements 2 intensive project drafts with students and teachers from several universities participating.

**Monitoring visits** – under the bilateral agreements signed, three visits took place – see Table X. - 4 – to present the Faculty of Electrical Engineering and Communication, the Faculty of Civil Engineering, and Brno University of Technology, get acquainted with the conditions of study at 4 partner universities, and make personal contacts to teachers and international office staffs.

**Intensive programme** – realised in April 2002 entitled: New Functions for Industrial Areas in Zlin. The co-ordinator at the Faculty of Architecture was Prof. Helena Zemánková. The event was attended by 24 students from 4 countries and 5 universities and heavily supported by the Zlin municipality.

**Language courses within the Erasmus programme** – a Czech course for foreign students coming to BUT within the programme both in the spring and autumn semester. A one-week intensive Czech course for international students before the start of the semester. All the courses were organized by the Institute of Foreign Languages at the Faculty of Civil Engineering and funded by the EU.

**Socrates / Erasmus mobile exhibition** featuring study abroad. At the exhibition, held in March and April, works by BUT students at foreign universities were shown. Inaugurated in the BUT Centre auditorium by a discussion with students, the exhibition was then installed at all the BUT faculties.

### **Inter-university co-operation**

In 2002, the arranging of master agreements with foreign universities continued. Particular co-operation forms were anchored in bilateral agreements signed at the faculties involved. A total of 12 master agreements were signed and 9 are being prepared – see Table X. - 1.

### **Ministry of Education development programmes**

Within student mobility programmes, 24 students stayed at universities abroad with a total length of 74 months and a funding of 715 000 CZK. The stays could be realized either thanks to bilateral agreements or as "free movers". The programmes were designed to support the stays of students at foreign universities.

### **Co-operation with GREF**

This co-operation with a French organisation of retired teachers, went on in 2002 by organizing French courses for students and BUT academic staff with native French speakers.

### **Co-operation with TU Dresden – the Herbert Quandt Foundation**

This co-operation with TU Dresden and the Herbert Quandt Foundation in Bad Homburg had been going on for the fourth consecutive year, offering scholarships for study stays at TU Dresden to BUT students and research staff. The monthly scholarship for students amounted to 425 EUR for a maximum of 2 years and, for doctoral students, to 625 EUR for a maximum of 1 year. The foundation also covered travel costs. In 2002/2003, two students were selected receiving a scholarship of 8,335 EUR.

### **Student Mobility Fund**

A Student Mobility Fund was established in 2002 to help increase the number of BUT student mobilities. This fund was used to contribute to the Socrates / Erasmus study stays in countries where the cost of living is extremely high as well as student mobilities outside this programme. The average contribution could amount to 6,000 CZK per month with the highest sum reaching 20,000 CZK per stay. A total of 1,654,000 CZK was paid out from this fund to students in 2002.

The recipients included 134 Socrates / Erasmus programme students and 26 students outside this programme. Judging by the one-year experience, the fund significantly helps extend student mobilities. It was used to support stays abroad of students both within and outside the Socrates / Erasmus programme with contributions only provided for costs of stay that could be proved to be higher than usual. A new set of rules is being prepared for 2003 governing the use of the fund, which is expected to extend the possibilities of application and to increase the maximum contribution amount.

## XI. OTHER BUT ACTIVITIES

28

### **Brno Centre of European Studies**

Providing Europe-oriented education is among BUT's important tasks in the creation of a European university-education and research space as well as in preparation for the Czech EU accession. As part of this preparation, BUT's involvement in the European education initiative of other Brno public universities, the Military academy, and the Brno Municipality – the Brno Centre of European Studies (BCES) - is of great importance. Established by an agreement signed by the rectors of Brno universities and by the Mayor of Brno in 2002, BCES created the functional basis and started its activities. Its mission was to integrate the professional potential of the Brno universities in European education, provide education in its own as well in joint programmes concerning issues of European education, provide related counselling and information services in various areas connected with the process of European integration and accession as well as to present joint activities at an international, mostly European, level.

Prof. RNDr. Ing. Jan Vrbka, DrSc. was elected the first chairman of BCES' panel and Prof. Ing. Emanuel Ondráček, CSc. was elected chairman of its board of directors. BUT Rector's Office, BUT Bursar and the Centre of Education and Counselling were appointed co-ordinators of common BCES activities at BUT.

BCES' first year activities at BUT focussed on analysing the situation of European education, consolidating the existing and developing new educational programmes at BUT. The following courses were among the most important activities conducted in 2002:

1. European Consultant – a one-semester and five-module combined programme, 76 lessons, organized jointly by CEAC and the BUT Faculty of Business and Management within a Socrates DISCOPUS project.
2. Management of European Projects, a two-day course, 16 lessons, organized by CEAC.
3. Programme of European aviation legislature and regulations courses, 15 one-to-three-day courses, organized jointly by CEAC and the Aviation Institute of the Faculty of Mechanical Engineering and accredited by the Czech Ministry of Transport and Communication on 28<sup>th</sup> February 2002.

The above BUT programmes were attended by 780 students in 2002.

The year 2002 also saw the beginning of the development of the following courses:

- a) LLM in European Corporate Law, a four-semester programme organized jointly by the Faculty of Law of Masaryk University in Brno, Nottingham Business School, and Nottingham Law School at the Nottingham Trent University, United Kingdom. At BUT, the programme will be organized jointly by CEAC and the Faculty of Business and Management and launched in the academic year 2004/2005.

b) European Counselling, a six-semester Bachelor's degree programme organized jointly by all six Brno universities.

c) PaedIGIP, European Pedagogical Study, a two-semester programme with its graduates becoming qualified European engineers-teachers, as yet organized at CEAC in Brno with an accreditation by International Gesellschaft für Ingenieurpädagogik IGIP.

d) Courses of European aviation legislature and regulations for 20 Central and Eastern European countries within an accreditation by UK Civil Aviation Authority and under the auspices of the European Civil Aviation Conference.

The Centre of Education and Counselling also co-ordinated work on an analysis of the existing European education programmes at Brno universities and had presentations made of BCES as well as of BUT within BCES.

Two books were published at BUT bearing the CEAC logo and receiving its support. The first one entitled Thoughts for the New Millennium was edited by VUTIUM Press and Computer Press edited the second one entitled European Union – institutions, economic, security, and social policy.

### **Academic gathering**

On the occasion of an anniversary of the founding of the Brno Technical University in 1899, each year a gathering of representatives of Brno universities and the Czech Ministry of Education takes place. At the gathering held on 7<sup>th</sup> November 2002, Prof. RNDr. Ing. Jan Vrbka, DrSc. Rector of BUT, awarded a gold medal to Prof. Ing. Antonín Pištěk, CSc. for his lifetime research and teaching.

### **Honorary doctorates**

On 15<sup>th</sup> November, the BUT Scientific Board awarded honorary doctorates to two distinguished persons who contributed a great deal to the development of areas that are part of BUT's long-term mission. They were awarded to:

Mr HIDDE HERMAN BRONGHERSMA, professor at Eindhoven University of Technology, an expert of international renown in physics and chemistry of surfaces;

DETLEF SCHMIDT, member of the Volkswagen Group top management, a leading European expert in enterprise management.

### **Gold Medals**

Prof. RNDr. Ing. Jan Vrbka, DrSc. Rector of BUT, awarded gold medals to Prof. Ing. Antonín Pištěk, CSc., director of the Institute of Aviation of the Faculty of Mechanical Engineering and

Doc. Włodzimierz Karaszewski, an associate professor at Nicolas Copernicus University in Torun (see Table V.-7)

### **Concerts, exhibitions, lectures, and discussions**

For members of the academic community as well for the public, the BUT Centre organizes concerts, exhibitions, lectures, and discussions on topical social or political subjects.

### **BUT News**

BUT News is a monthly with NONAME as a student supplement that depicts life at BUT and gives opinions on topical events both at BUT and outside it.

### **Promotion materials**

A revised version of a Brno University of Technology promotion brochure and an information leaflet with data on BUT and its faculties were published. This leaflet appeared in a Czech and an English version.

### **Student accommodation**

In the academic year 2002/2003, students were provided with accommodation according to a unified BUT waiting list set up by a Dormitories and Refectories board using criteria approved by the Rector.

By 9<sup>th</sup> October 2002, ninety-nine percent of the accommodation capacity had been used up.

The remaining capacity was kept in reserve to meet the SOCRATES, ERASMUS, and CEEPUS accommodation requirements for foreign students staying at BUT as part of exchange programmes.

By the end of 2002, not all of the student applicants on the waiting list could be accommodated (856 rejected requests were registered on 15<sup>th</sup> January 2003).

For the academic year 2002/2003, BUT offered 170 beds to students of Masaryk University and 80 beds to VFU students.

Over the calendar year 2002, 97.4% of the student bed capacity was used.

For details, see Table XII.-1, XII.-2, XII.-4 to XII.-6.

In the summer months, the capacity of student computer networks was extended. The number of connected sites had already exceeded 2,500. The equipment in students' rooms was being renovated and the wiring overloaded due to the increased number of room computers repaired.

### **Meals**

The "V" restaurant built as part of an overall renovation of the Faculty of Civil engineering replaced the unsatisfactory snack bar that had provided meals for students in the building. The capacity was doubled while the overall quality of meals served in the faculty building was improved.

Repairs of other refectories continued so that they complied with the required hygienic standards to improve the dining environment – in the refectory in Kounicova street, for example, the interior was refurbished and the tables and chairs replaced.

By building a new dining room for teachers at the Faculty of Mechanical Engineering the space for students at the "Q" restaurant had grown.



The increased demand for meals by students in the refectories run by the BUT Dormitories and Refectories was given by the wide choice of the meals and the extended dining capacity.

All the BUT refectories marked an increased number of meals actually served to students.

### **Scholarships**

For scholarships, see Chapter IV. Education and Table IV.-9

### **Information services and counselling**

Included in the activities of the Centre of Education and Counselling in Chapter XVII.

### **Physical education, sports, artistic and other activities of students**

Included in the activities of the Centre of Sports in Chapter XVII.

### **Student Chamber of the Academic Senate**

In 2002 the Student Chamber of the Academic Senate had already worked in the changed structure of BUT student organisations. Mr Jaroslav Švec from the Faculty of Information Technology was elected chairman of the Student Chamber of the Academic Senate and Mr František Drtil from the Faculty of Electrical Engineering and Communication vice-chairman, The Student Chamber of the Academic Senate is represented in the Supervisory Board of the BUT Dormitories and Refectories. Mr Jiří Jeřábek from the Faculty of Business and Management was in the Student Chamber of the University Council.

The Student Chamber launched a petition against the introduction of tuition fees paid by the students, which was signed by 2,086 university students and passed to the Petition Committee of the Czech Parliament and to the chairmen of the parliament clubs on 6<sup>th</sup> February 2002.

The Student Chamber of the Academic Senate met twice in 2002 to deal with topical issues and the Academic Centre of Student Activities organized a 2nd National Student Conference, which was attended by 120 representatives from 25 universities. The main theme of the conference was "The links of universities to the graduates and their employers". The students organized a BUT Grand Ball, BUT Majales, helped organize the Czech Academic Games, etc.

### **Academic Centre of Student Activities (ACSA)**

This is a project submitted by Brno University of technology and approved and subsidised by the Czech Ministry of Education. The subsidy for 2002 amounted to 400,000 CZK.

The ACSA project was initiated because of the need to define and support on a long-term basis the importance of the position of a student at a university.

#### **The basic areas of activity:**

- development of academic self-administration focused on the position of students
- collection and evaluation of important problems of university students and the subsequent generalization of the solution of selected cases
- collection and analysis of data needed for a student appraisal of quality as a feedback important for the institution, Ministry of Education, Centre for the Study of Higher Education as well as for the potential employers.

### XIII. UNIVERSITY MANAGEMENT

34

In 2002 BUT was managed according to an approved balanced budget (Act no. 111/1998 Coll.) and an income of 9,554,000 CZK was achieved. The profits and losses were evenly distributed over the fiscal year.

#### **Basic factors of the management in 2002:**

- A profit of 22,623,000 CZK in supplementary operations compensated for a loss of 13,069,000 CZK.
- The profit and loss figures as well as the depreciation of fixed assets and the subsidies by the Fixed Assets Reproduction Fund were very positively influenced by the sale of the Kníničky property (a profit of 13,860 000 CZK) and the exchange of land with the town of Brno (a profit of 12,237,000 CZK)
- Dynamic investing had no effect on the increase of equity.
- The Fixed Assets Reproduction Fund drop was within the expected limit especially with a view of the construction of the Integrated Building and the construction of the lecture hall complex and the reconstruction of the buildings at Božetěchova.
- All the investments planned were covered.
- All the faculties and university departments kept a balanced budget.
- From the income tax point of view (tax return on 30<sup>th</sup> June 2003) a loss will be recorded for 2002.
- The volume of overdue receivables was again cut in 2002. Receivables overdue more than 18 months of CZK 8.1 million will be settled in court.
- The average pay increase trend was kept at 11.7 % (higher increase in academic staff).
- A slight deterioration in targeted-subsidy spending (in 1999 – 3,549,000 CZK unspent, in 2000 – 83,000 CZK unspent, in 2001 – 181,000 CZK unspent, in 2002 – 427,000 CZK unspent).

For detailed information see Tables XIII.-1 to XIII.-5.

### **Property reproduction programme**

- buildings – non-investment funds – Table XIV.-1 to XIV.-6
- buildings – investment funds – Table XIV.-7a to XIV.-7c
- investment funds for purchasing machines and equipment not included in costs shown in Table XIV.-8
- summary of account balances of the Fixed Assets Reproduction Fund on 31<sup>st</sup> December 2002 in Table XIV.-9.

## XV. OTHER DATA AS REQUIRED BY THE MANAGEMENT BOARD OF A PUBLIC UNIVERSITY

36

(by virtue of Section 21, Paragraph 2, Letter d) of Act no. 111/1998 Coll.)

### **Management Board Activity**

In 2002, two meetings of the BUT Management Board took place with the following agenda:

#### **Meeting held on 22nd April 2002**

- Debate over the results of the inspection by the National Inspection Board performed from April to June 2001.
- Opinion of the Management Board on the budget for 2002.
- Opinion of the Management Board on the Annual Report of the Management in 2001.
- Opinion of the Management Board on the update of the 2003 mission statement.
- Approval by the Management Board of a transfer of real estates.

#### **Meeting held on 18<sup>th</sup> November 2002**

- Information for the Management Board on the result of the elections of BUT Rector for the period of 2003 to 2005.
- Debate over the result of an inspection of the Financial directorate.
- Information on the new BUT development plan
- Approval by the Management Board of a transfer of real estates.
- Information on the preparation of a BUT incubator accepted.

For members of the Management Board, see Table III.-3.

## XVI. CHANGES OF INTERNAL REGULATIONS

37

The internal BUT regulations that were approved and entered into force in 2002 are shown in Table XVI.-1.

## XVII. ACTIVITIES OF FACULTIES AND BUT DEPARTMENTS

On the following pages, detailed information on BUT faculties and departments can be found.

# Faculty of Civil Engineering

Faculty of Civil Engineering  
Brno University of Technology  
Veveří 331/95, 662 37 Brno  
e-mail: [dekan@fce.vutbr.cz](mailto:dekan@fce.vutbr.cz)  
<http://www.fce.vutbr.cz>



## Dean

Doc. Ing. Jaroslav Puchřík, CSc.

## Vice-Deans

Doc. Ing. Bohumil Straka, CSc.

Ing. Karel Čupr, CSc.

Doc. RNDr. Miloslav Švec, CSc.

Doc. Ing. Bohumil Puchýř, CSc.

Doc. Ing. Miloslav Novotný, CSc.

## Chairman of the Academic Senate

Mgr. Václav Božek, CSc.

## Secretary

Ing. Tibor Horoščák, CSc.

## Faculty institutes

1. Institute of Mathematics and Descriptive Geometry  
headed by RNDr. Ivo Moll, CSc.
2. Institute of Physics  
headed by Doc. RNDr. Zdeněk Chobola, CSc.
3. Institute of Chemistry  
headed by Doc. RNDr. Pavla Rovnaníková, CSc.
4. Institute of Structural Mechanics  
headed by Doc. Ing. Jaroslav Žák, CSc.
5. Institute of Geodesy  
headed by Doc. Ing. Josef Vitásek, CSc.
6. Institute of Geotechnics  
headed by Doc. Ing. Kamila Weiglová, CSc.
7. Institute of Building Structures  
headed by Doc. Ing. Ivan Moudrý, CSc.
8. Institute of Technology of Building Materials and Components  
headed by Prof. Ing. Rostislav Drochytka, CSc.
9. Institute of Concrete and Masonry Structures  
headed by Prof. Ing. Jiří Stráský, CSc.



10. Institute of Roads Structures  
headed by Doc. Ing. Jan Kudrna, CSc.
11. Institute of Railway Structures and Constructions  
headed by Doc. Ing. Pavel Zvěřina, CSc.
12. Institute of Metal and Timber Structures  
headed by Prof. Ing. Jindřich Melcher, DrSc.
13. Institute of Municipal Water Management  
headed by Ing. Ladislav Tuhovčák, CSc.
14. Institute of Water Structures  
headed by Doc. Ing. Vlastimil Stara, CSc.
15. Institute of Landscape Water Management  
headed by Ing. Rudolf Milerski, CSc.
16. Institute of Building Services  
headed by Ing. Jiří Hirš, CSc.
17. Institute of Computer Aided Engineering and Computer Science  
headed by Doc. RNDr. Jiří Macur, CSc.
18. Institute of Structural Economics and Management  
headed by Ing. Leonora Marková, Ph.D.
19. Institute of Technology, Mechanization and Construction Management  
headed by Mgr. Petr Lízal, CSc.
20. Institute of Languages – until 31<sup>st</sup> August 2002  
headed by PhDr. Darja Daňková
21. Institute of Structural Materials and Testing Methods  
– from 1<sup>st</sup> September 2002, Institute of Construction Testing  
headed by Prof. Ing. Jiří Adámek, CSc.
22. Institute of Radiation Defectoscopy – until 31<sup>st</sup> August 2002  
headed by Doc. Ing. Leonard Hobst, CSc.
23. Institute of Social Sciences  
– from 1<sup>st</sup> September 2002, Institute of Social Sciences and languages  
headed by Doc. PhDr. Rudolf Kohoutek, CSc.
24. Library and Information Centre  
headed by Marie Davidová
25. Centre for Computation Technology Management  
headed by Ing. Miloslav Zimmermann

## Teaching

In this area, the Faculty of Civil Engineering pursues three major priorities:

- provide quality teaching in all the fields and specializations of the programmes accredited on 20<sup>th</sup> July 2001,
- prepare and submit for accreditation to the Czech Ministry of Education the "civil engineering" and "geodesy and cartography" full-time programmes as required by the University Act no. 111/1998 Coll. and as implied by the changes implemented by Acts no. 210/2000 Coll. and 147/2001 Coll. The structured programme created should pursue the priorities of BUT and faculty mission statement,
- complete the faculty integrated information system for study modules

## Research and development activities

These activities focused on four research designs. The faculty staff is involved in 6 international projects within the 5<sup>th</sup> EU DP (Care S, Marie Curie Fellowship, Interact) and in one project within the Visegrad Fund (Visero), two joint Polish-Czech projects, they cooperate on projects with Slovenia, Austria, Hungary, and Slovakia.

Work continues on 31 projects of the Czech Grant Agency, one project of the Czech Ministry of Transport and Communications, 3 projects of the Czech Ministry of Industry and Commerce and one project of the Czech Ministry of Agriculture. A total of seven projects have been worked on within the Czech Ministry of Education (Programme of support of Bachelor's degree programmes as an expression of the support of the Bologna declaration and Programme of the support of selected programmes).

## Major creative activities at the faculty

Creative and research activities are based on the long-term concepts of faculty development as formulated in the "Faculty Mission Statement for 2000 to 2005". These are the following major directions:

- Theory, reliability and mechanism of failure of building structures under static and dynamic stress.
- Research and development of new materials from waste.
- Development of optimisation and simulation methods for solving the current problems in water management under the conditions of sustained development.

- Optimisation of energy consumption as a targeted synthesis of all the basic criteria of buildings.
- Integrated technologies for engineering geodesy and digital mapping.
- Non-traditional study methods for complex and vague systems.
- Development of economic tools for optimum construction design and implementation.

### **Newly appointed associate professors**

In 2001 seven members of the faculty staff were appointed associate professors.

Three associate professors successfully concluded the proceedings to be appointed professors.

### **Student Research Activity**

This activity is co-ordinated by a Student Research Board and persons appointed at the faculty departments. A total of 189 students took part in the 27 sections of a faculty research competition. The 13 best students were delegated to take part in an international round of the competition held in Ostrava. Our students won 4 first places, one second and 5 third places.

### **International Relations and Promotion**

In 2002 activities based on bilateral agreements were carried on. The number of foreign universities and institution co-operating with the Faculty of Civil Engineering on a regular basis was increased to 78.

A total of 451 trips abroad were made in 2002 including 365 trips with participations in congresses, conferences, and symposia and publishing contributions in proceedings. The total costs increased to 3,520,000 CZK being mostly covered by grants. Thirty-one countries were visited.

In 2002, the faculty was visited by 58 teachers, doctoral students and post-graduate students from abroad and the cost were mostly paid from research grants.

### **Development**

In 2002 the reconstruction of building „E1“, at Veverř 95 was finished so that institutes provisionally placed at Údolní 53 could again move in. This means that all the faculty institutes are now situated in the Veverř 95-Žižkova 17-Rybškova 1 area. The repair of the facade at Žižkova 17 was finished. A covered footpath connecting buildings D and D2 was built due to partial funding by the faculty.

An overhaul of building A at Veveří 95 was started to be finished in August 2003.

Projects are being prepared for a conversion of building F to integrated laboratories of water structures, replacement of windows in building D and part of building D2, adjustment and new use of outdoor areas at Veveří 95.

### **Lifelong Learning**

Lectures on topical subjects in all the fields taught at the Faculty of Civil Engineering. These lectures are recorded in point evaluation of the education system within ČKAIT.

### **Students Appraising the Teaching**

As in previous years, students could take part in an intranet inquiry to appraise the quality of teaching. A total of 258 students participated in appraising 236 teachers.

### **Library and information centre**

The Library and Information Centre will provide its customers (students, faculty staff, wider public) with comprehensive library and information services such as study of printed documents in the reading rooms, loans, reference services, and access to electronic information sources. In 2002, a reconstruction and extension of the library and information centre premises was started, which is to be finished by the beginning of the academic year 2003/2004. The number of study places will be doubled, about 300 places will be available to the users including 60 PC's with Internet access. The PC rooms will be equipped with state-of-the-art computing technology helping the students search for information and process tasks assigned in courses.

# Faculty of Mechanical Engineering



Faculty of Mechanical Engineering  
Brno University of Technology  
Technická 2896/2, 616 69 Brno  
email: [mail@fme.vutbr.cz](mailto:mail@fme.vutbr.cz)  
<http://www.fme.vutbr.cz>

## Dean

Prof. Ing. Josef Vačkář, CSc.

## Vice-deans

Prof. Ing. Jiří Švejcar, CSc.

Deputy-Dean, research, doctoral study, economic operations

Doc. RNDr. Miroslav Doupovec, CSc.

first-stage Master's degree courses, admission procedure, Bachelor's degree courses, combined courses, scholarships, the STUDENT enrolment system

Doc. Dr. Ing. Radek Knoflíček

external relations and promotion, development

Doc. Ing. Zdeněk Harna, CSc.

second-stage Master's degree courses, publishing, external teachers, lifelong learning

## Secretary

Ing. Vladimír Kotek

## Chairman of the Academic Senate

Doc. RNDr. Jiří Spousta, Ph.D.

## Chairman of the Scientific Board

Prof. Ing. Josef Vačkář, CSc.

## Departments

Institute of Mathematics

headed by Prof. RNDr. Alexander Ženíšek, DrSc.

Institute of Physical Engineering

headed by Prof. RNDr. Miroslav Liška, DrSc.

Institute of Mechanics of Solids

headed by Prof. Ing. Ctirad Kratochvíl, DrSc.

Institute of Materials Engineering

headed by Prof. Ing. Luděk Ptáček, CSc.

Institute of Design

headed by Doc. Ing. Josef Šupák, CSc.

Institute of Power Engineering

headed by Doc. Ing. Zdeněk Skála, CSc.

Institute of Manufacturing Technology  
 headed by Prof. Ing. Karel Kocman, DrSc.  
 Institute of Production Machines, Systems, and Robotics  
 headed by Doc. Ing. Zdeněk Kolíbal, CSc.  
 Institute of Process and Environmental Engineering  
 headed by Prof. Ing. Petr Stehlík, CSc.  
 Institute of Transport Engineering  
 headed by Prof. Ing. Václav Píšťek, DrSc.  
 Institute of Aerospace Engineering  
 headed by Prof. Ing. Antonín Píšťek, CSc.  
 Institute of Automation and Information Technology  
 headed by Doc. RNDr. Ing. Miloš Šeda, Dr.  
 Institute of Languages  
 headed by Mgr. Jitka Kudličková

### The Faculty of Mechanical Engineering offers the following programmes:

- **Master's degree programme** 230-01-T Mechanical engineering
- **Specialised Bachelor's degree programme** 23-41-R Mechanical engineering
- **Follow-up Master's degree programme** 23-01-T Mechanical Engineering
- **General Bachelor's degree programme** 39-01-R Applied sciences in engineering
- **Doctoral programmes:** Manufacturing technology, Applied sciences in engineering, Machines and equipment, Applications of natural sciences, Physical and materials engineering, Forensic engineering.

### Main Features of the Study at the Faculty

- the study specialisation need not be chosen at the very beginning of the study,
- wide offer of fields and specializations including new ones such as industrial design in mechanical engineering, applied ecology, biomechanics, mechatronics, computer design,
- interdisciplinary programmes of „mathematical engineering " and „physical engineering " in co-operation with Masaryk University,
- extensive computer support of all the study branches,
- chance of achieving the EUR ING degree recognized all over Europe.

Full-time courses are available in all the programmes. A combined study can be chosen for some specialised Bachelor's degree courses. This type of study combines working on home assignments and attending lectures (one day per week).

### **Newly Appointed Professors and Associate Professors**

Three professors and nine associated professors were appointed at the Faculty of Mechanical Engineering.

### **Major events in 2002**

In conformance with the faculty mission statement, the management in co-operation with heads of institutes and specialization boards managed to cut down the average weekly teaching load to 24 hours per academic year.

The stabilization of the faculty in administrative operations initialised at the end of 2001 continued co-ordinated by the faculty secretary.

### **Most Important Research Result**

The Faculty of Mechanical Engineering has many institutes that are concerned with basic and applied research. A total of 150 projects were worked on in 2002 funded with a total amount of 177 million CZK. The successful project of the Centre of Aviation and Space Research, which contributes to the development of science and research at BUT, may be mentioned for all.

### **Student Competitions**

A research competition of the FME doctoral students was held in December 2002. Sixty-five doctoral students presented their papers.

### **Students appraising teachers**

Every year, students are addressed in an anonymous inquiry organised by the faculty management to give their opinion on the professional ability of their teacher and on the way they teach. Apart from this, they can voice their opinion on any issue of their interest and concern. The inquiry was effected in a correct way with the management responding to every comment on the faculty web site.

### **Preparation and Accreditation of New Programmes**

Every effort was made to prepare the documents needed for the establishment and accreditation of two-year follow-up Mechanical Engineering and Applied Sciences in Engineering programmes, to enable the Bachelor's degree students to earn the Mater's degree. The faculty management keeps supporting the student mobility and improving both horizontal and vertical study transferability.



## **Development and Transformation Programmes**

Work continued on the "Combined Mechanical Engineering Bachelor's Degree Programme" project implemented in co-operation with the regional specialised secondary schools and on the "Preparation of the Applied Sciences and Informatics Bachelor's Degree Programme" implemented in co-operation with a specialised secondary school in Čáslav the Faculty of Mechanical Engineering won in 2001.

## **Reconstruction**

In 2002, several important adjustments and reconstructions were performed:

- A new staff dining room with meals sold was built to provide new rooms for food and text book shops
- Lifts in building A2 were overhauled

Faculty of Electrical Engineering and Communication  
Brno University of Technology  
Údolní 224/53, 602 00 Brno  
e-mail: [info@feec.vutbr.cz](mailto:info@feec.vutbr.cz)  
<http://www.vutbr.cz>



# Faculty of Electrical Engineering and Communication

**Dean**

Prof. Ing. Radim Vrba, CSc. (from 1<sup>st</sup> February 2002)

**Vice-Deans**

Doc. Ing. Pavel Jura, CSc.

Deputy Dean, first-stage programmes

Prof. Ing. Václav Říčný, CSc.

Vice-Dean, second-stage programmes

Doc. Ing. František Zezulka, CSc.

Vice-Dean, external relations

Prof. Ing. Zbyněk Raida (from 15<sup>th</sup> April 2002)

creative activities

**Chairwoman of the Academic Senate**

RNDr. Vlasta Krupková, CSc.

**Faculty Secretary**

Ing. Miloslav Morda

**Institutes**

Institute of Control, Measurement and Instrumentation

headed by Prof. Ing. Petr Vavřín, DrSc.

Institute of Biomedical Engineering

headed by Prof. Ing. Jiří Jan, CSc.

Institute of Power Engineering

headed by Doc. Ing. Antonín Matoušek, CSc.

Institute of Electrical and Electronic Technology

headed by Doc. Ing. Josef Jiráček, CSc.

Institute of Physics

headed by Doc. RNDr. Marian Štrunc, CSc. until 30<sup>th</sup> June 2002

Doc. Ing. Lubomír Grmela, CSc. from 1<sup>st</sup> July 2002

Institute of Languages

headed by PhDr. Milena Krhutová

Institute of Mathematics

headed by Prof. RNDr. Jan Chvalina, DrSc.

Institute of Microelectronics

headed by Prof. Ing. Vladislav Musil, CSc.

Institute of Radioelectronics

headed by Prof. Ing. Jiří Svačina, CSc.

Institute of Theoretical and Experimental Electrical Engineering

headed by Doc. Ing. Milan Murina, CSc.

Institute of Telecommunications

headed by Prof. Ing. Kamil Vrba, CSc.

Institute of Electrical Machines and Devices

headed by Doc. Ing. Čestmír Ondrůšek, CSc.

### **The Faculty offers the following newly accredited programmes:**

Electrical Engineering, Electronics, Communication, and Control – a Bachelor's degree programme beginning in the academic year 2002/2003 in the following fields:

- Automation and Measurement
- Electronics and Communication
- Microelectronics and Technology
- Heavy-Current and Power Engineering
- Teleinformatics
- Electrical Engineering, Electronics, Communication, and Control – a Master's degree programme beginning in the academic year 2006/2007 in the following fields:

- Biomedical and Environmental Engineering
- Electronics and Radio Communication
- Power Engineering
- Production and Management in Electrical Engineering
- Cybernetics, Automation, and Measurement
- Microelectronics
- Heavy-Current and Power Engineering
- Telecommunication and Information Technology

Electrical Engineering, Electronics, Communication, and Control – a Doctor's degree programme beginning on 1<sup>st</sup> January 2002 in the following fields:

- Electronics and Communication
- Microelectronics and Technology
- Biomedical electronics and Power Engineering
- Heavy-Current and Power Engineering
- Teleinformatics
- Cybernetics, Automation, and Measurement
- Theoretical Electrical Engineering

### **Existing running out programmes:**

- Electrical Engineering and Informatics – a Bachelor's degree programme
- Electrical Engineering and Informatics – a Master's degree programme
- Electrical Engineering and Informatics – a follow-up Master's degree programme

Within the CAM and EC fields, Biomedical Engineering can be studied in special medical and biomedical courses

### **Newly Appointed Professors and Associate Professors**

Two associate professors were appointed at the faculty.

### **Major Events**

The following are the events that mostly influenced life at the faculty:

- work on the Programme Council
- teaching in the newly accredited Bachelor's degree programme in all five fields was started
- participation of the faculty in the INVEX 2002, GAUDEAMUS 2002 and ELEKTRO BRNO 2002 fairs
- large development grant was won from the Czech Ministry of Education for the preparation of combined and distance programmes
- large number of projects were won in all the categories of the University Development Fund,
- large number of undergraduate and doctoral students participated in the very well organized STUDENT FEI 2002 conference with very good contributions,
- integrated building of the Faculty of Electrical Engineering and Communication and the Faculty of Business and Management is being built on the Pod Palackého vrchem campus
- students and young teachers were active in organizing informative visits to general and specialized secondary schools,
- RoBohemia, a team of co-operating mobile robots won the European championship in the MIROSOT small league category and, for the first time, also in the MIROSOT middleleague category held in Vienna from 18<sup>th</sup> to 21<sup>st</sup> April 2002
- co-operation between the faculty and industrial companies both large and small and middle-sized
- traditional ball was held of the Faculty of Electrical Engineering and Communication and the Faculty of Information Technology

## **The Most Important Research Result**

A large number of faculty institutes were involved in the preparation for participation in the 6<sup>th</sup> framework programme announced by the EU Commission for the period from 2004 to 2008. A total of 19 Eol proposals were submitted for work on research projects in the two most important programme activities.

## **Further faculty development**

A new Internet room was opened on the second floor of building A4 at Technická 2 on 15<sup>th</sup> October 2002. The total funding spent on the Internet room exceeded 1,900,000 CZK. The Internet room is open daily including holidays. Forty workstations equipped with powerful technology have been installed in the room.

Supported by the University Development Fund, a new three-million-CZK multi-functional laboratory for testing new methods in automation was built at the Institute of Control, Measurement, and Instrumentation. The University Development Fund contribution amounted to 868,000 CZK in investment funding and 1,119,000 CZK in non-investment funding. The laboratory will be used for courses in one-chip computers, programmable PLC automata, distributed systems for technological process control, SCADA operator tools, and further control tools, real-time regulation and visualization, C++ and Java programming, MATLAB and database modelling for the purposes of automatic control.

## **Development programmes**

Apart from a number of projects from the Grant Agency of the Czech Republic and smaller projects from the University Development Fund, the faculty won a development programme from the Czech Ministry of Education for the development and gradual building of electronic teaching support. This project aims to gradually develop tools and study aids for combined distance programmes in every study field at the Faculty of Electrical Engineering and Communication.

## **Student Competitions**

The Faculty of Electrical Engineering and Communication and the Faculty of Information Technology organised a joint 8<sup>th</sup> STUDENT FEI competition conference.

It is a student-work-presentation competition and provides a good opportunity to strengthen the relations between the faculty and its industrial partners. For the 2002 competition, NATIONAL SEMICONDUCTOR was the diamond sponsor, with FLEXTRONIX, ALCATEL CZECH, MOTOROLA, JME, SIEMENS, ANF DATA, FOXCONN CZ, ST, VEMA, ŽS BRNO, CELESTICA and others as other important sponsors.

### **Students Appraising the Teaching**

The Programme Councils are responsible for providing assessment of the quality of teaching. This assessment is effected for:

- curricula and their innovation in each study branch,
- individual courses using course cards updated on a regular basis.

In addition, in each semester, faculty students give their appraisals of about 20 percent of selected courses and teachers in anonymous inquiries. The courses to be appraised are rotated in a 5-year cycle as determined by the heads of institutes. The completed questionnaires are evaluated by the Student Union with the results passed on to the heads of institutes and published on the web.

Faculty of Architecture  
Brno University of Technology  
Poříčí 237/5, 639 00 Brno  
e-mail: [jmeno@fa.vutbr.cz](mailto:jmeno@fa.vutbr.cz)  
<http://www.fa.vutbr.cz>



**Faculty of Architecture**



**Dean**

Doc. Ing. Josef Chybík, CSc.  
Chairman of the Scientific Board

**Vice-Deans**

Doc. Ing. arch. Dagmar Glosová, CSc.,  
Deputy Dean, education  
Ing. arch. Josef Hrabec, CSc.,  
Creative activities and admissions  
Ing. RNDr. Milan Kynčl,  
External relations until 31<sup>st</sup> January 2002  
Ing. arch. Hana Ryšavá, CSc.  
External relations since 1<sup>st</sup> February 2002  
Akad. sochař Oldřich Rujbr,  
Development

**Secretary**

Ing. Jan Krnáč

**Chairman of the Academic Senate**

Ing. arch. Jan Hrubý, CSc. until 29<sup>th</sup> November 2002  
Ing. arch. Jiří Knesl since 5<sup>th</sup> December 2002

**Institutes and studios**

Institute of Drawing and Modelling  
headed by Doc. Ing. arch. Zdeněk Makovský  
Institute of Free Creative Activity  
headed by Akad. sochař Oldřich Rujbr  
Institute of the Theory of Architecture  
headed by Ing. arch. Karel Doležel  
Institute of the Theory of Town Planning  
headed by Doc. Ing. arch. Jan Koutný, CSc.  
Institute of Building Structure  
headed by Prof. Ing. Jiří Vaverka, DrSc.

- Institute of Construction  
headed by Ing. Petr Kostíha
- Studio of Living Environment  
headed by Doc. Ing. arch. Dagmar Glosová, CSc.
- Studio of Public Construction  
headed by Ing. arch. Hana Ryšavá, CSc.
- Studio of Manufacturing Construction  
headed by Doc. Ing. arch. Alois Nový, CSc.
- Studio of Monument Reconstruction  
headed by Prof. Ing. arch. Helena Zemánková, CSc.
- Studio of Urban Design  
headed by Ing. arch. Karel Havlíš
- Studio of Interiors and Exhibitions  
headed by Doc. Ing. arch. Jiljí Šindlar, CSc.
- Computing Centre  
headed by Doc. Ing. Jan Viktorin, CSc.

### The faculty provides courses in the following programmes:

- **Bachelor's degree programme:**  
35-01-7 Architecture and Town Planning
- **Master's degree programme:**  
35-01-8 Architecture and Town Planning
- **Doctoral programme:**  
35-01-9 Architecture  
35-02-9 Town Planning

### Major events in 2002

The most important event for the faculty was the accreditation of its programmes. The Bachelor's degree programme was accredited until 2010 while courses of the Master's degree programme were accredited until 2006. As a result of the accreditation procedure, the faculty also achieved the accreditation of a Master's degree programme in the English language.

Among major events is also the *Tradition und Zukunft der Moderne* (Tradition and Future of the Modern Style) international conference held in co-operation with the Saxon Art Academy attended by experts from Germany, Poland, Slovakia, and the Czech republic, among them Professor Günther Behnisch, an architect of world renown.

## Most important research results

The most important research result is the successful progress of the MSM 264100016 research design entitled "The Czech Architecture and Town-Planning in the New Situation". This research design became the basic research resource at the faculty.

The Town and Flood project, a task assigned by the Czech Grant Agency, was successfully completed. One of its outcomes is a book that, from a global point of view, suggests a strategy for the development of towns after floods, collects experiences in protecting towns against floods and documents the existing knowledge about floods on our territory. The project was headed and the book written by Doc. Ing. arch. Miloslav Konvička, CSc et al.

A new project was accepted by the Czech Grant Agency entitled "The Situation and Outlook of the Production Areas of the Czech Industrial Towns" submitted by a team headed by Doc. Ing. arch. Alois Nový, CSc.

## Results of creative activities

A number of exhibitions took place in 2002 where the results of the students' or teachers' creation could be seen. An exhibition featuring the life work profile of Professor Ivan Ruler was one of them as well as the Brno Philharmonic Orchestra exhibition in Besední dům or exhibitions presenting the habitation theme – the "Habitation of Senior Citizens in Brno", Brno-Líšeň Habří, "Grand Locality", On the Return of Feeling into Town", exhibition or the "Architectural Structures" exhibition in Bratislava, the "Figurama 2002" exhibition in Znojmo, Brno, and Prague, an exhibition and student competition in Bratislava or the Brno Brownfields exhibition.

The faculty academic staff organised specialised and research conferences. Among them were the "6<sup>th</sup> Research Conference of Doctoral Students", "Modern Sacral Constructions", or a conference on town-planning.

A number of international student workshops were held such as "*Umweltfreundliches Dorf Hostěnin – Bílé Karpaty*" - "Environmental Village of Hostěnice in Bílé karpaty" or "New functions for industrial areas in Zlín".

Due to the funding received from the University Development Fund, technical equipment was procured that will significantly contribute to developing creative activities and improving the teaching of modelling techniques at the faculty. This project was managed by academic sculptor Oldřich Rujbr.

## Student Competitions

The quality of teaching can also be judged by the results achieved by the faculty in student competitions. The 2002 Review of Diploma Projects organised by the Czech Chamber of Architects was attended by five Czech schools of architecture. Among the 32 works registered, Pavel Klein's project entitled "The Grand Locality" received the second prize. This work was supervised by Doc. Ing. arch. Milan Stehlik, CSc.

The first prize of the "Best Town-Planning Project" went to a student from the BUT Faculty of Architecture. In Hebel, a prestigious student competition, attended regularly by schools of architecture from the Czech and Slovak republics, students from the BUT Faculty of Architecture won the second and third place. Another student from the BUT Faculty of Architecture won the first prize in the Le Corbusiere's Glasses competition held in Bratislava.

## Reconstruction

The above-ground floors of the faculty building A were reconstructed. After organizational changes effected in the academic year 200/2001, the Dean's office was concentrated on the ground floor, the studios on the second and third floors and the institutes of the theory of architecture and town-planning on the fourth floor of building A. The Great Hall was repaired and two lecture halls were built in the attic. The technical institutes were moved to building B.

In co-operation with the Academy of Arts, Architecture and Design in Prague, the first symposium of Ceramists was organised in Bechyně with concrete furnishing objects – drinking fountains as its outcomes, which as the result of joint work of a Japanese ceramists and a team of Czech ones, are permanently and functionally installed in areas adjoining the floor corridors.

# Faculty of Business and Management



Faculty of Business and Management  
Brno University of Technology  
Technická 2896/2, 602 00 Brno  
e-mail: dean@fbm.vutbr.cz  
e-mail: jmeno@fbm.vutbr.cz  
<http://www.fbm.vutbr.cz>

## Dean

Doc. Ing. Karel Rais, CSc., MBA until 31<sup>st</sup> October 2002

Doc. Ing. Miloš Koch, CSc. since 1<sup>st</sup> November 2002

## Dean's advisor

Doc. Ing. Karel Rais, CSc., MBA, since 1<sup>st</sup> November 2002

## Vice-Deans

Doc. Ing. Miloš Koch, CSc., until 31<sup>st</sup> October 2002

Research

Doc. Ing. Vojtěch Koráb, Dr., MBA, since 1<sup>st</sup> November 2002

Deputy-Dean, research

Ing. Miloš Drdla, Dr., MBA,

International relations and development

Prof. RNDr. Ivan Mezník, CSc., since 1<sup>st</sup> November 2002

Development

Prof. RNDr. Ivan Mezník, CSc., until 31<sup>st</sup> October 2002

Deputy-Dean, teaching

Doc. Ing. Mária Režňáková, CSc., since 1<sup>st</sup> November 2002

Teaching

RNDr. Anna Putnová, Ph.D., MBA, until 31<sup>st</sup> October 2002

Foreign studies and complementary activity

Doc. Ing. Vladimír Chalupský, CSc., MBA, since 1<sup>st</sup> November 2002

International relations

## Secretary

Ing. Václav Meluzín

## Chairman of the Academic Senate

Ing. Viktor Ondrák, Ph.D.

## Institutes

- Institute of Applied Disciplines  
headed by Doc. Ing. Anna Fedorová, CSc.
- Institute of Economics and Management  
headed by Ing. Alena Kocmanová, Ph.D.
- Institute of Postgraduate Studies – Brno Business School  
headed by Ing. Oldřich Šašínska, MBA

## The Faculty offers the following programmes

- |                                |                                |         |
|--------------------------------|--------------------------------|---------|
| • Bachelor's degree programme: | Tax consultancy                | 62-77-7 |
| • Master's degree programme:   | Corporate Finance and Business | 62-28-8 |
| • Master's degree programme:   | Enterprise Management          | 62-55-8 |
| • Doctoral programme:          | Enterprise Management          | 62-55-9 |

## Main Features of the Study

The faculty has accreditation for the Economics and Management programmes. In addition, the Tax Consultancy Bachelor's degree programme is offered to secondary school graduates who want to become experts in tax consultancy and accounting. The Corporate Finance and Business programme is intended for those who have obtained their Bachelor's degree or have passed the first three years of an economic Master's degree programme. Those who have received their Bachelor's degree or have passed the first three years of a technical Master's degree programme may apply for an Enterprise Management Master's degree programme designed to educate experts in management of large and medium sized companies. Master's degree graduates may apply for an Enterprise Management doctoral programme to become top experts in corporate research and management.

## Lifelong-Learning Programmes

In co-operation with The Nottingham Trent University, the faculty offers a four-year British Bachelor's degree Management and Business Finance programme. The Institute of Postgraduate Studies – Brno Business School provides life-long learning courses in economics, management, and marketing. The Master of Business Administration studies organised in co-operation with Nottingham Trent University, Great Britain, are its pivot element. The faculty also co-operates with Nicolas Copernicus University in Poland on international management and marketing studies for top management staff.

### **The most important research result**

Improved quality of the outcomes of the "New Trends in the Development of Mechanical and Electrical Engineering Companies Especially in the South Moravian Region" research design. This research design was progressively internationalised (joined by partners from EU countries). Quality results of the research design will serve as the preparation of a project for the 6<sup>th</sup> EU Framework Programme.

### **The largest success**

The accreditation extension was approved at the beginning of the year.

### **Students Appraising the Teaching**

A Programme Council works at the faculty whose task it is to deal with problems encountered and submit proposals to the Dean and the Academic Senate of their solutions. The Senate organises an anonymous inquiry among students twice a year. The results are then discussed at the Senate sessions and used as a basis for evaluating the quality of teaching and teachers.

### **Preparation and accreditation of new programmes**

The faculty was getting ready for the accreditation of two new inter-faculty Bachelor's degree study fields – "Business Informatics" and "Management of Manufacturing Processes"

### **Development and Transformation programmes**

The faculty won two projects offered by the University Development Fund in the Project of Support of Selected Programmes for the preparation of the newly accredited study branches.

### **Newly Appointed Associate Professors**

Three new associate professors were appointed at the Faculty. One professor candidate entered the appointment procedure.

### **Student Competitions**

Two faculty students won the first prize in the Euroweek 2002 student competition held at Kavala, Greece with their contribution entitled "The image of a bank in the mind of an individual – the issue of feelings or reason?"



## Major events

- In September, the faculty held a special meeting of the scientific board to commemorate the faculty's tenth anniversary.
- Transformation of the economies of Central and Eastern European Countries, an international conference organised on the occasion of the faculty's tenth anniversary.
- New Trends in the Development of Industries, an international conference
- Computer-Aided Management of Small and Medium Enterprises, an international conference
- Day of open doors, the fourth FBM Students' Ball. Participation in the Gaudeamus education fair.
- Squash Cup Open – the Faculty of Business and Management versus the rest of the world
- The Art of Speaking – rhetoric competition (5 faculty students taking part).
- Selected teachers organised lectures at partner European universities both as visiting teachers and invited conference speakers
- A psychological counselling point was established for faculty students and teachers

## Faculty Development

The project preparation was finished and construction started of a new integrated building on the Pod Palackého vrchem campus.

Faculty of Chemistry  
Brno University of Technology  
Purkyňova 464/118, 612 00 Brno  
e-mail: dean@fch.vutbr.cz  
<http://www.fch.vutbr.cz>



**Faculty of Chemistry**

**Dean**

Prof. Ing. Milan Drdák, DrSc. until 4<sup>th</sup> October 2002 (died on 5<sup>th</sup> October 2002)  
Deputy Dean – Prof. Ing. Jaroslav Fiala, CSc. from 7<sup>th</sup> October 2002

**Vice-Deans**

Prof. Ing. Jaroslav Fiala, CSc. until 6<sup>th</sup> October 2002  
Deputy-Dean, creative activities, external relations  
Prof. Ing. Ladislav Omelka, DrSc since 10<sup>th</sup> October 2002  
Deputy-Dean, creative activities  
Doc. RNDr. Zdeněk Šimek, CSc. until 2<sup>nd</sup> May 2002  
Teaching – Bachelor's and Master's degree programmes  
Doc. Ing. Michal Veselý, CSc. since 2<sup>nd</sup> May 2002  
External relations and teaching

**Faculty Secretary**

Ing. Renata Herrmannová

**Chairman of the Academic Senate**

Doc. Ing. Ivan Mašek, CSc. until 26<sup>th</sup> November 2002  
RNDr. Božena Kábelová since 27<sup>th</sup> November 2002

**Institutes**

Institute of Physical and Consumer Chemistry  
headed by Doc. Ing. Miloslav Pekař, CSc.  
Institute of Chemistry and Technology of Environmental Protection  
headed by Doc. Ing. Ivan Mašek, CSc.  
Institute of Material Chemistry  
headed by Prof. RNDr. Josef Jančář, CSc.  
Institute of Chemistry of Foodstuffs and Biotechnology  
headed by Doc. Ing. Miroslav Fišera, CSc.

**Main features of study at the faculty:**

- choice of a specialization is not required at the very beginning of study,
- wide range of study fields,

- follow-up Master's degree courses available,
- extensive computer support of all the programmes,
- an (EUR ING) degree option available.

Both full-time and combined courses are offered for all the programmes. The combined courses combine work on home assignments and attendance of lectures (one full-day per week, one laboratory practice block per semester).

### The faculty offers the following accredited programmes:

Programmes	Study fields	
<b>Bachelor's degree</b>		
2801R	Chemistry and Technology of Environmental Protection	Technical chemistry 28-97-701
<b>Master's degree</b>		
2805T	Chemistry and Technology of Environmental Protection	Chemistry and Technology of Environmental Protection 28-19-800
2806T	Consumer Chemistry	Consumer Chemistry 29-07-800
2808T	Material Chemistry and Technology	Material Chemistry 28-18-800
2801T	Chemistry and Technology of Foodstuffs	Foodstuff chemistry and biotechnology 29-06-800
<b>Doctoral</b>		
1404V	Physical chemistry	Physical chemistry 14-04-900
1405V	Macromolecular chemistry	Macromolecular chemistry 14-05-900
2805V	Chemistry and Technology of Environmental Protection	Chemistry of environment 28-56-900
3911V	Materials science	Materials engineering 39-42-900

### Newly appointed professors

The faculty Scientific Board appointed two new associated professors and proposed the appointment of one professor.

### Short summary of major events

In 2002, the faculty commemorated two important anniversaries - the 91<sup>st</sup> anniversary of its founding and 10<sup>th</sup> anniversary of renewed activities - by organising two international and one national conference and two student competitions.

An international workshop entitled "Technology and processes for sustainable development and pollution reduction/prevention" was held in January 2002 attended by 76 experts for the Czech republic and other 10 European countries.

The biggest conference organised by the faculty was the "2nd Meeting on Chemistry and Life" in September 2002. The conference was opened by a special meeting of the Scientific board and the faculty academic community where commemorative medals of three degrees were awarded to distinguished personalities that had contributed the most to the renewal and further development of the Faculty of Chemistry over the last ten years. This special occasion meeting was attended by 6 rectors and 19 deans of Czech and Slovak faculties specialising in chemistry.

A workshop organised under the heading "Organisation, preparation, and implementation of the concept of the State in the preparation of crisis management and protection of population at the regional, district, and community level" was also part of the celebrations. It was attended by 33 experts from the central administrative bodies (Ministry of the Interior, Ministry of Foreign Affairs), regional authorities, and representatives from universities and municipalities.

On 5<sup>th</sup> October the faculty suffered a great loss. After a severe disease, Dean of the faculty, Prof. Ing Milan Drdák, DrSc. passed away at the age of 53. Prof. Ing. Jaroslav Fiala, CSc., deputy dean, resumed the faculty management

In October and November, regular elections took place for the faculty and university Academic Senate. On 26<sup>th</sup> November, the newly elected Senate then elected dean of the Faculty of Chemistry for the term in office from 1<sup>st</sup> February 2003 to 31<sup>st</sup> January 2006. Prof. Ing. Jaroslav Fiala, CSc., was elected dean of the faculty.

### **The Most Important Research Result**

Research designs and other projects funded by grant agencies were the focus of the research activity at the faculty. One of the two research designs worked on at the faculty received the highest assessment as the only one at BUT.

### **Students Appraising the Teaching**

At the end of each semester, the Faculty organises an anonymous inquiry in which the students appraise the performance of teachers. The department heads and their academic staff are informed of the results and the overall evaluation of the inquiry. The overall results are

then published on the faculty's official notice board. They serve as an important document helping to improve teaching at the faculty as well as in individual institutes.

### **Student Competitions**

The faculty pays constant attention to student specialised events. As part of the celebrations of the 10<sup>th</sup> faculty anniversary, two student prize-awarding conferences were held. In May, a STUDENT FCH 2002 research competition for the Master's degree students was organized. In October, doctoral students could participate in a conference and competition by presenting a paper in a world's major language. Joint proceedings were published by the Faculty of both the competitions.

### **Preparation and Accreditation of New Programmes**

Due to unrelenting demand for the study of foodstuff chemistry and in conformance with the BUT mission statement for the period from 1999 to 2005, a Chemistry and Technology of Foodstuff Bachelor's degree programme was designed at the faculty and submitted for accreditation. A four-year accreditation was received for its full-time and combined study variants with two specialisation fields: Foodstuff Chemistry and Biotechnology.

### **Development and Transformation Programmes**

In 2002, project 174/2001-2002 entitled "Development project of Bachelor's degree programmes as an expression of support and implementation of the Bologna declaration" for the support of the establishment of the Chemistry and Technology of Foodstuff Bachelor's programme was brought to a successful end. At the same time, the Faculty of Chemistry won the competition for another development project for the introduction of an interdisciplinary Bachelor's degree programme entitled "Crisis management and protection of population" for the years 2003 to 2004.

### **Reconstructions**

In 2002, the reconstruction of building C506 was finished with specialised laboratories built.

# Faculty of Fine Arts



Faculty of Fine Arts  
Brno University of Technology  
Rybářská 125/13/15, 603 00 Brno  
e-mail: [jmeno@ffa.vutbr.cz](mailto:jmeno@ffa.vutbr.cz)  
<http://www.ffa.vutbr.cz>

**Dean**

Prof. PhDr. Jan Sedlák, CSc.

**Vice-Deans**

Ph.Dr. Pavel Ondračka,

Deputy-Dean, teaching

Ak. soch. Zdeněk Zdařil,

Development and material supply

Doc. Dr. Jiří H. Kocman,

Creative activities, external relations, since 1<sup>st</sup> October 2002

**Secretary**

Mgr. Jaroslava Bílá

**Chairman of the Academic Senate**

Mgr. Rostislav Nliederle, Ph.D.

**Fields of study – Studios, department and sections****Sculpture**

Sculpture Studio I (figurative) • Doc. ak. soch. Michal Gabriel

Sculpture Studio II (non-figurative) • Doc. ak. soch. Jan Ambrůz

**Painting**

Painting Studio I (figurative) • Prof. ak. mal. Jiří Načeradský until 31<sup>st</sup> August 2002

Doc. ak. mal. Petr Veselý since 1<sup>st</sup> September 2002

Painting Studio II (non-figurative) • Doc. ak. mal. Martin Mainer

Painting Studio III • Doc. MgA. Petr Kvíčala since 1<sup>st</sup> July 2002

**Graphics**

Graphics Studio • Ak. mal. Margita Titlová–Ylovski

Painting Studio • Prom. ped. Václav Stratil

**Graphic Design**

Graphic Design Studio • Mgr. Václav Houf

Paper and Book Studio • Doc. Dr. Jiří H. Kocman

**Conceptual Tendencies**

Intermedia Studio • Doc. MgA. Petr Kvíčala until 30<sup>th</sup> June 2002

Environment Studio • Ak. mal. Vladimír Merta



#### Video-multimedia-performance

Video and Multimedia Studio • Prof. ak. mal. Peter Rónai  
 Multimedia Studio • Mgr. Richard Fajnor since 1<sup>st</sup> July 2002  
 Performance Studio • Doc. ak. soch. Tomáš Ruller

#### Industrial Design

Product Design Studio • Ak. soch. Zdeněk Zdařil  
 Body Design Studio • Doc. Mgr. Jana Preková

Department of Theories and Complementary Studies • Mgr. Blahoslav Rozbořil

Evening Drawing Section • Doc. ak. mal. Ivan Kříž until 30<sup>th</sup> June 2002  
 Doc. Mgr. Josef Daněk since 1<sup>st</sup> July 2002

Photography Section • Mgr. Irena Armutidisová

Information Technology Section • Ing. Jaroslav Maloch, CSc.

Video section • Ing. Dalibor Vlašín

### **Bachelor's degree programme fields of study**

KKOV 82-16-711 • Fine Art – Painting – Free Creation  
 KKOV 82-16-721 • Fine Art – Sculpture – Free Creation  
 KKOV 82-16-730 • Fine Art – Graphics  
 KKOV 82-16-746 • Fine Art – Graphic Design  
 KKOV 82-16-747 • Fine Art – Conceptual Tendencies  
 KKOV 82-16-748 • Fine Art – Video-Multimedia-Performance  
 KKOV 82-17-7 • Industrial Design

### **Branches of the Master's degree programme**

KKOV 82-16-811 • Fine Art – Painting – Free Creation  
 KKOV 82-16-821 • Fine Art – Sculpture – Free Creation  
 KKOV 82-16-830 • Fine Art – Graphics  
 KKOV 82-16-846 • Fine Art – Graphic Design  
 KKOV 82-16-847 • Fine Art – Conceptual Tendencies  
 KKOV 82-16-848 • Fine Art – Video-Multimedia-Performance  
 KKOV 82-17-8 • Industrial Design

Following an approval by the Accreditation Commission of 25<sup>th</sup> January 2002, file no. 11265/2002-30, the Czech Ministry of Education extended the accreditation of the Faculty of Fine Arts until 25<sup>th</sup> January 2006.

## Pedagogic and Creative Mission

The study branches are designed to be an even mixture of classical, design, and new art disciplines. The large number of study branches is the result of the fact that the BUT Faculty of Fine Arts is the only institution of higher education of this kind in Moravia and Silesia. The faculty recruits its students from all the regions of the Czech Republic and, in some cases, also from abroad. The academic staff boasts prominent Brno artists as well as many from Prague, Olomouc and Bratislava. The students of the faculty come from all over the Czech Republic and from abroad. The faculty also offers some special courses that cannot be found at any artistic school in the Czech Republic (body design, paper and book).

In the course of the four-year Bachelor's degree study, the mastering of all the professional and handicraft skills and technological methods is given much attention since this is the basis for the development of the student's artistic talent. Students who, in view of their creative development, prove to be of great promise are admitted to follow-up two-year Master's degree courses where they are led to an independent approach to more sophisticated artistic concepts. Courses in studios at both study levels are complemented by a number of required and optional theoretical lectures and courses. At the end of their Master's degree study, students are required to submit both a practical and a theoretical degree project.

The graduates of all the study branches and specializations who have proved a great talent will assert themselves as free-lance artists. However, they only form a small group of individual, who will seldom start off as independent artists right from the beginning since their emancipation is usually preceded by a period of artistic development. This category of young artists usually attended one of the classical discipline studios. Owing to a great demand, students of designer branches and specializations find their jobs very quickly while those studying the new disciplines will usually have to make do with singular opportunities. Considering all this, the faculty courses are shaped to equip all the graduates so that they can find temporary and if possible permanent alternative chances using their technological, handicraft, theoretical, and managerial abilities. A number of faculty graduates teaches at both general and specialized secondary schools and some of them have become curators.

## Selected teach and student exhibitions

- Czech Season in France. Nudity in Czech Photography, Paris, 1. 1. - 31. 12. 2002 (participation by Irena Armutidisová)
- Public Presentation of final projects at the Faculty of Fine Arts, Brno, 2. - 3. 2. 2002
- In the old and new way or more or less Šarovy 2001. Sculpture Studio of Jan Ambrůz, BUT Faculty of Fine Arts. Galerie Výpad, Olomouc, 7. - 25. 2. 2002
- Monochromy. Monochromatic tendencies in the Czech fine arts after 1990. České muzeum

- výtvarných umění. Praha, 14. 2. - 7. 4. 2002 (participation by Václav Stratil, Jan Ambrůz, Petr Kvíčala, Jana Apetauerová, Jan Nálevka)
- Video-multimedia-performance. Studio of Tomáš Ruller 1992/2002. University of Fine Arts - Galéria Medium, Bratislava, 21. 3. - 6. 4. 2002
  - Václav Stratil. Self-portraits. Moravská galerie v Brně, 27. 3. - 9. 6. 2002
  - Jiří Hynek Kocman. Author hand-made papers/author books. Galerie Jiřího Jílka, Šumperk, 3. - 28. 4. 2002
  - Václav Houf. Pardubice Partial Sum. A handful of posters ... several illustrations ... some typography - Univerzitní knihovna - Galerie Univerzity Pardubice, 9. 4. - 30. 5. 2002
  - Faces - Gesichter. 100 Portraits aus 32 Ländern. Heidelberger Schloß, 5. 5. - 30. 8. 2002 (participation by Irena Armutidisová)
  - Ivan Kříž. Twofold Objects. Kavárna a galerie Hamlet, Brno, 7. 5. - 30. 6. 2002
  - Petr Kvíčala. Line - Colour - Rythm. National Art Gallery in Prague, Veletržní palác, 30. 5. - 28. 7. 2002
  - Youth at the Castle - works by students of artistic university-type schools. Museum in Bruntál, 1. 6. - 30. 9. 2002 (participation by Studios of Michal Gabriel and Jana Ambrůz - David Moješčík. Jana Matějková, Štěpán Hulc, Marian Maršálek, Robert Vlasák)
  - Students of the Sculpture Studio of Michal Gabriel, Galerie Doubner, Prague, 21. 6. - 3. 7. 2002
  - Public presentation of final Bachelor's degree projects by students of the Faculty of Fine Arts. The faculty premises and Letohrádek Mitrovských, Brno, 14. - 16. 6. 2002
  - Jiří Šindler - illustrations, writing. Moravská galerie v Brně, Pražákův palác, 14. 8. - 29. 10. 2002
  - Brno plein air 2002. Sculpture Symposium at the Brno reservoir landing-place, 9. - 20. 9. 2002 (participation Tomáš Medek and David Medek)
  - Václav Stratil. Self-portraits. Bohemia magica. Czech season in France. Printemps de septembre. Espace Ecureuil, Toulouse, 27. 9. - 13. 10. 2002
  - Mezzanine. Students and graduates from the Graphic and Visual Communication Studio led by Margita Titlová-Ylovsky. Galerie NoD, Praha, 9. 10. - 2. 11. 2002
  - 3<sup>rd</sup> Central European Drawing Biennale, Plzeň 2002. Galerie města Plzně, 23. 10. - 16. 11. 2002 (participation by Ivan Kříž)
  - Don't forget to take out your wings, Honza! Students of the Painting Studio of Martin Mainer, Galerie NoD, Praha, 26. 11. - 14. 12. 2002
  - Johannes van Nepomuk. Der Heilige Mittel-Europas aus der Sicht europäischer Maler. Museum moderner Kunst, Stiftung Wörlen, Passau, 30. 11. 2002 - 9. 2. 2003 (participation by Petr Kvíčala, Margita Titlová-Ylovsky)
  - Václav Stratil. Self-portraits. Bohemia magica. Czech season in France. Centre national de la photographie, Paris, 4. 12. 2002 - 17. 2. 2003
  - Martin Zálesák. My Nature. Galerie Aspekt, Brno, 17. 12. 2002 - 7. 2. 2003

### **Student competitions**

For her book Autumn Thoughts, Ms Barbara Slezáková won a free-creation prize in the FENOMÉN KNIHA international competition held by the Department of Arts of the Pedagogic Faculty of Masaryk University in Brno.

### **Development**

The reconstructions in the building at Údolní 495/19 performed in 2002 received funding according to the Plan of Building Investment and Non-Investment Costs Related to the BUT Development in 2002.

# Faculty of Information Technology



Faculty of Information Technology  
Brno University of Technology  
Božetěchova 1/2, 612 66 Brno  
e-mail: [jmeno@fit.vutbr.cz](mailto:jmeno@fit.vutbr.cz)  
<http://www.fit.vutbr.cz>

## Dean

Prof. Ing. Tomáš Hruška, CSc.

## Vice-deans

Prof. RNDr. Milan Češka, CSc.

Creative activities

Doc. Ing. Vladimír Drábek, CSc.

Teaching

Prof. Ing. Jan M. Honzík, CSc.

External relations, Deputy-Dean

Ing. Zdeněk Bouša

Development

## Chairman of the Academic Senate

Doc. Ing. Jaroslav Zendulka, CSc.

## Faculty secretary

Ing. Zdeněk Bouša

## Institutes

Institute of information systems

headed by Doc. Ing. Jaroslav Zendulka, CSc.

Institute of intelligent systems

headed by Dr. Ing. Petr Hanáček

Institute of computer graphics and multimedia

headed by Doc. Dr. Ing. Pavel Zemčík

Institute of computer systems

headed by Prof. Ing. Václav Dvořák, DrSc.

## The FIT offers the following accredited programmes:

- Information technologies, Bachelor's degree three-year programme to be started in 2002
- Electrical engineering and informatics, Master's degree five-year running out existing programme

- Electrical engineering and informatics, Bachelor's degree three-and-a-half-year running out existing programme
- Electrical engineering and informatics, follow-up Master's degree three-year running out existing programme
- Information technologies, Doctoral three-year active programme
- Information technologies, follow-up Master's degree two-year programme to be started in 2005

The above programmes include computer technical equipment and software. They provide basics of theoretical computer science and computing methods and their practical applications to analysis, design specification, operation and maintenance of computer systems, computer networks, data procurement and transfer facilities as well as other computing applications.

Computing applications in a number of disciplines are of such a great importance that they may require knowledge of computing and information technology in conjunction with other field of science. Thus the students in Master's degree programmes can also subscribe for additional supporting courses taught at the Faculty of Electrical Engineering and Communication specialised in medical informatics and biomedical engineering.

### **Important event**

The Faculty of Information Technology was established on 1<sup>st</sup> January 2002.

The Faculty of Information Technology was established on 1<sup>st</sup> January 2002 based on the former Institute of Computer Science and Engineering.

In 2001 a number of historic decisions was made at the BUT Faculty of Electrical Engineering and Computer Science in respect of the establishment of the Faculty of Information Technology and the transformation of the mother Faculty of Electrical Engineering and Computer Science into the Faculty of Electrical Engineering and Communication. The BUT Academic Senate approved the new faculty to be established on 1<sup>st</sup> January 2002. The organizational and economic preparations of the establishment and transformation were concluded by the Rector's decision to appoint Prof. Ing. Radimír Vrba, CSc. dean of the future Faculty of Electrical Engineering and Communication and Prof. Ing. Tomáš Hruška, CSc. dean of the Faculty of Information Technology.

## Major events

- the accreditation commission of the Czech Ministry of Education approved the founding of the Faculty of Information Technology on 1<sup>st</sup> January 2002.
- elections for the Academic senate on 7<sup>th</sup> January 2002,
- the new faculty management resumes its authority on 1<sup>st</sup> January 2002,
- day of open doors at the Faculty of Information Technology on 15<sup>th</sup> January 2002,
- faculty great ball,
- participation in the renewal of the BUT mission statement,
- adopting a faculty mission statement,
- involvement of all the faculty teachers in the preparation of the new programmes,
- on 16<sup>th</sup> September 2002, the inauguration of the Faculty of Information Technology took place, a new lecture hall complex at Božetěchova 2 was opened, a computer laboratory donated by Siemens and new computer laboratories in the reconstructed former gym were opened,
- Doc. Dr. Ing. Pavel Zemčik – SOCRATES programme co-operation of the Faculty of Information Technology with TEI Crete on an "Intensive programme" and the Master's degree programme,
- presentation at the GAUDEAMUS 2002 education fair of the new programmes,
- first matriculation of the first-year FIT students,
- IEEE Design and Diagnostics of Electronics Circuits and Systems conference from 17<sup>th</sup> to 19<sup>th</sup> April 2002,
- activities to implement the Czech Ministry of Education development programmes for the preparation and implementation of the BSc. "Information Technologies" programme and for the preparation of a distance form of this programme for accreditation, elections of a candidate for the appointment of BUT rector,
- participation in CSEW 2002 (Computer Science Education Workshop), held from 7<sup>th</sup> to 8<sup>th</sup> November 2002 in a facility of the Zilina University in Súľ'ovo, Slovakia.

## Most important scientific result

In 2002, the Faculty of Information Technology won a prestigious grant by the European Commission in multi-modal communication with a computer (computer speech processing and computer vision). The aim of the M4 "Multi-Modal Meeting Manager" project is to develop a system for analysing and recording live meetings. Microphones and cameras will be pointed at the participants in a meeting. Their speech and gestures will be automatically recognized and indexed for better subsequent retrieval. The user will then be able to for example ask the system when Mr X was mentioning subject Y with the system automatically retrieving the relevant sequences.



Within this three-year project, the faculty will be cooperating with the leading European and American academic institutions such as Technical University of Munich, Sheffield University, International Computer Science Institute in Berkeley, California, Geneva and Lausanne universities and other universities. World's leading computer companies are interested in the results of this project.

### **Preparation and accreditation of new programmes**

In 2002, preparations were started at the Faculty of Information Technology for work on the three-year development programme of the Czech Ministry of Education to support the preparation of the accreditation of an Information Technologies distance Bachelor's degree programme. The programme is designed for three years. In the first year, work is directed towards creating electronic textbooks and teaching aids.

### **Student competitions**

The Student EEICT competition is designed for the presentation of the works by students of two faculties – the Faculty of Electrical Engineering and Communication and the Faculty of Information Technology. In 2002, the student competition conference took place on 25<sup>th</sup> April with the participation of important electrical engineering and information companies. Apart from its competition part, the conference also offers excellent opportunities to strengthen the relations between the faculties and their industrial partners. The 2002 diamond sponsor was National Semiconductor. Other sponsors included Flextronics, Motorola, Jihomoravská energetika, a.s., Alcatel, Siemens, ANF Data, Foxconn cz, Vema, ŽS Brno, Celestica, Hewlett Packard, and several others.

### **Appraising the quality of teaching**

Responsible for the appraisal of the quality of teaching according to the accredited programmes at the faculty are the Programme Councils. This appraisal is carried out for

- curricula and their updating and innovation,
- courses.

Next a student appraisal is organised in each semester of about 20% of selected courses and their teachers. The courses to be appraised are determined by heads of institutes so that they rotate in a five-year cycle. The appraisal takes the form of anonymous questionnaires that are processed by the Student Union. The results for the Spring semester of the academic year 2001/2002 were passed on to heads of institutes and published at the web site.

## Development

Once the Faculty of Information Technology was founded on 1<sup>st</sup> January 2002, a strategy had to be adopted for its material support and placement. A basic material entitled "The Building Programme" was prepared, which is based on the programmes accredited, the student and staff numbers expected, and whose outcome was the area requirement by categories. Using the results of a study of the efficiency of the Božetěchova 1 campus, the BUT management adopted a strategic decision to place the Faculty of Information Technology on this campus.

In conformance with this decision, a new lecture hall complex was put into operation in the middle of 2002 with three lecture halls (150 places, twice 70 places) very well equipped, and a supply entry built with the second court reconstructed. This required a funding of about 67 million CZK.

In 2002, attempts succeeded to put the Božetěchova 2 campus (a former Cartesian monastery) on a list of buildings to be salvaged as part of the Czech architectural inheritance while an investment plan was being prepared at BUT to reconstruct and finish the BUT Božetěchova campus. According to these documents, the former south enclosures were included in the renovation project. Three out of the four south enclosures along with their interiors were gradually repaired with a funding of almost 17 million CZK (1.1 million CZK contributed by the State). The renovated enclosures will be housing Dean's Office departments.

A number of makeshift measures had to be undertaken to secure the teaching in the academic year 2002/2003 and to minimize the financial loss. A former gym was adapted to three computer laboratories with 21 workstations each and interior equipment. A Siemens computer laboratory was finished. Two seminar rooms were renovated and a new Dean's meeting room built, which is also used for teaching small groups of students.



## CENTRE OF SPORTS ACTIVITIES OF BUT (CESA)

Technická 2896/2, 612 00 Brno  
<http://www.vutbr.cz/cesa>



## COMPUTER AND INFORMATION SERVICES CENTRE (CISC)

Antonínská 548/1, 601 90 Brno  
<http://www.vutbr.cz/cvis>



## CENTRE OF EDUCATION AND COUNSELLING (CEACO)

Antonínská 548/1, 601 90 Brno  
<http://www.vutbr.cz/cevapo>



## DORMITORIES AND REFECTORIES IN BRNO (DaR)

Kolejní 2905/2, 612 00 Brno  
<http://www.skm.vutbr.cz>



## VUTIUM PRESS

Antonínská 548/1, 601 90 Brno  
<http://www.vutbr.cz/nakl/>



## INSTITUTE OF FORENSIC ENGINEERING (IFE)

Údolní 244/53, 602 00 Brno  
<http://www.vutbr.cz/usi>



## CENTRAL LIBRARY OF BUT (CL)

Antonínská 548/1, 601 90 Brno  
<http://www.vutbr.cz/uk>

**Director**

PaedDr. Jaroslav Bogdálék

The year 2002 at CESA saw the renewal of Universiad, a student sports festival. CESA initiated a student gathering and started a new tradition of organising Czech Academic Games. From 5<sup>th</sup> to 11<sup>th</sup> 1,700, students from all over the Czech Republic, Slovakia and other countries were meeting on the BUT sports grounds competing to earn the titles of the best Czech academic athletes. This huge event ended with a success of the organisers and the BUT athletes who had ended up third in the overall competition of universities.

**Teaching**

- in 2002 the number of students taking part in one of the 38 events increased to 6,700
- CESA introduced an electronic system of registration for physical education and sports
- indoor cycling teaching room was opened to implement a new teaching method
- accreditations were received from the Czech Ministry of education for re-qualification aerobic, skiing, indoor cycling and fitness courses

**Major Sporting Events**

- Olympic Day Run
- Run Through Špilberk
- 17<sup>th</sup> November Run
- Upstairs-race at the Faculty of Mechanical Engineering
- Christmas Games and a number of other events

**Social Events**

BUT Athletes' Ball with the Best BUT Athlete award

**Major results at the Czech Academic Championship**

	athletics	
800 m women	NÁDENÍČKOVÁ Michaela	3rd place
1500 m men	PETŘÍKOVÁ Irena	2nd place
3000 m women	PETŘÍKOVÁ Irena	2nd place
200 m men	HRABOVSKÝ Petr	3rd place
400 m men	HRABOVSKÝ Petr	1st place
<b>long jump</b>	MUTYABA Miron	1st place

<b>triple jump</b>	MUTYABA Miron	1st place
	KANTOR Libor	3rd place

## Best performance

	athletics	
<b>triple jump</b>	MUTYABA Miron	2nd place
<b>baseball</b> men	BUT Brno	2nd place
<b>basketball</b> men	BUT Brno	2nd place
<b>football</b> men	BUT Brno	2nd place
<b>judo</b>		
women 72+ kg category	NAVRÁTILOVÁ Renata	2nd place
	MEITNEROVÁ Jitka	3rd place
men 60 kg category	MRÁZ Martin	3rd place
men 73 kg category	KOČNAR Antonín	2nd place
men 81 kg category	BEZUNK Antonín	3rd - 4th place
men 90 kg category	PROKOP Lukáš	3rd - 4th place
men 100 kg category	KRAJČA Karel	2nd place
	PROKOP Václav	3rd place
<b>karate</b>		
men KATA TEAM	VĚCHET S., VRBÍK F., HANZL J.	1st place
mena KATA	VĚCHET Stanislav	3rd - 4th place
men KUMITE	SVOBODA David	3rd - 4th place
<b>modern gymnastics</b>		
individuals - biathlon	WERTHEIMEROVÁ Petra	3rd place
<b>swimming</b>		
men 100 breast	JAKŠÍK Petr	2nd place
men 4 x 50 m free style	TOMÁNEK Jakub	3rd place
	KUSÝ Vladimír	3rd place
	STEINBAUER Vojtěch	3rd place
	SCHÄFER Jan	3rd place
<b>gymnastics</b>		
men individuals	GERYK Michal	1st place
<b>climbing</b> men	NOVÁK Stanislav	1st place
	HUDEČKA Jakub	3rd place

In 2002, the Computer and Information Services Centre underwent a major reorganization in an effort to improve the providing of information services at the university level and get involved in the research and development of new information and telecommunication technologies. Below is the new CISC organisational chart:

### **Director**

Ing. Jaromír Marušinec

### **Backbone Management Department**

Ing. Vladimír Záhořík

### **Operation Department**

Ing. Petr Horák

### **Development Department**

Ing. Rudolf Musil

### **Databases Department**

Ing. Milan Charvát

The Computer and Information Services Centre worked on introducing new information technologies as described in the Information and Communication Technologies chapter. It took part in several specialised conferences and is an active member of the CESNET and EUNIS associations.

### **Backbone Management in 2002**

- most important stage of the BUT Gigabit backbone network was implemented
- optical communication infrastructure was implemented
- hardware and software administration of network servers was carried out
- security measures within the BUT computer network were undertaken
- KolejNet Gigabit dormitories network was being built
- co-operation went on with authorised staff on the administration of faculty networks
- schools and non-profit organizations were being connected to the academic network

## Operation in 2002

- BUT telephone network, VoicelP and mobile communication were being developed and run
- printing was finished of chip contactless ID cards to replace magnetic strip cards for all BUT staff and students
- CESNET university ID card standardization project was joined
- cards were printed for other entities
- network servers at the Rector's Office were administered
- involvement in the administration of the Central Library and Dormitories and Refectories servers
- EkonFis economic information system was operated
- preparations were being made for the transfer to a new economic system, functional samples were tested and documentation prepared for a competition of tenders for the system supplier
- university software licenses were being administered, purchased, and optimised
- central printers were operated, payroll slips and listings printed
- training courses for the University of 3<sup>rd</sup> Age were provided
- training courses for the Czech Ministry of Education Internet-to-schools project were provided
- training and tests for the ECDL certificates were prepared

## Databases in 2002

- Central Database Warehouse was administered
- data analysis was created of the STUDIS pedagogic system
- faculty data sources were integrated into a central data warehouse
- minimum data interface level was established for the STUDIS system data integration
- database was created for the artistic activities at the Faculty of Fine Arts
- Brutis Mambo technology was transformed into Mambo 2
- Oracle, Progress, and MS SQL databases were being administered

## Development in 2002

- new Apollo three-tier technology was created to be used for the application areas of the BUT Information Centre with access to the Central Data Warehouse
- Internet application was created to enable university-level electronic registration for sports
- in co-operation with the Centre of Sports staff, operation of the application was begun
- Internet application was created to enable electronic BUT application submission

- prototype was created of admissions support application area
- several diploma projects of students from the Faculty of Information Technology were being supervised
- prototype of a BUT video-communication network was being developed
- new [www.vutbr.cz](http://www.vutbr.cz) web site was being worked on



### **Director**

Ing. Ladislav Janíček, Ph.D., MBA

The mission of the Centre of Education and Counselling is to create a perfect communication, information, education, and co-ordination background to help develop the system of life-long learning at Brno University of Technology, provide related counselling, information and organizational services and through its counselling complement teaching, and counselling at BUT faculties.

### **Education programme**

When designing and implementing life-long learning programmes, the Centre can build on the university professional background. Responding to particular educational needs the life-long learning programme offers a wide range of courses intended for various target groups among the public and the university staff itself.

### **Education programme comprises:**

- designing and offering add-on and interdisciplinary life-long learning programmes and courses to complement and extend the regular programmes offered at the faculties
- offering selected courses in the social sciences part of the faculty programmes to improve the professional profile of BUT students
- co-ordinating and, in co-operation with the faculties and their personnel departments, implementing an internal education programme for BUT academic staff
- providing support for education of senior citizens, a part of the University of the Third Age
- performing analyses and designing concepts and measures in support of an efficient development of the BUT life-long learning system

### **Consultancy programme**

The aim of this programme is to offer comprehensive information and services and counselling for BUT students both the present and the potential ones in their study, personal problems, profession and in dealing with social and legal issues. The Centre makes every effort to provide quality counselling and services in support of, research and counselling at faculties. It strives to build a communication interface between the university and the public through its information services presenting an offer of education and BUT professional potential.

**Consultancy programme comprises:**

- study consultancy
- personnel and professional consultancy and services
- psychological support and personal problems
- teaching consultancy and methods
- project consultancy and services
- marketing and multimedia services

**Structure**

The Centre consists of three organizational parts:

- Lifelong Learning
- University Consultancy – Consulting Centre
- University of the Third Age

### **Director**

Ing. Jaroslav Grulich

### **Head of Economic Department**

Ing. Vladimíra Žáčková

### **Head of Commerce and Organisation Department**

Jana Kalousková

### **Head of Administrative Section**

Marcela Spáleníková

### **Head of Technical Department**

Ing. Jan Ševčík

In its facilities, Brno University of technology provides accommodation and meals for its students, staff and the public.

### **Accommodation**

The Dormitories and Refectories in Brno manage 6,687 student beds in the following university dormitories:

- The Pod Palackého vrchem dormitory at Kolejní 2, 612 00 Brno (3,130 beds)
- The Purkyňovy dormitory at Purkyňova 93, 612 62 Brno (2,248 beds)
- The Mánesovy dormitory at Mánesova 12, 612 00 Brno (261 beds)
- The Listovy dormitory at Kounicova 46/48, 602 00 Brno (1,030 beds)

### **The Pod Palackého vrchem dormitory**

The dormitory is part of a BUT complex providing accommodation, meals, entertainment, and sports facilities. The accommodation part consists of four buildings. The rooms are double and triple occupancy each with its own bath. In some rooms, access to the Internet is available. Fitness gym, boulder centre, and climbing wall are offered for leisure mostly along with profes-

sional CESA trainers. A computer room can also be used with access to the Internet; branch offices of the Czech Post, Mahen library, student club, and a cinema are also available. A surgery consulting room is also situated on the premises.

### **The Purkyňovy dormitory**

This dormitory is situated in a quiet neighbourhood of Královo Pole. Accommodation is provided in four blocks. Rooms are double and triple occupancy; common baths are on each floor. In some rooms, access to the Internet is available.

A computer room, fitness gym, and TV rooms can be used. A surgery consulting room is available on the premises.

### **The Mánesovy dormitory**

This dormitory is also situated in Královo Pole. Accommodation is provided in two buildings where cell-type rooms have standard equipment (one double and one single rooms having a common bath). In some rooms, access to the Internet is available. A sauna is available.

### **The Listovy dormitory**

This dormitory is very close to the town centre. Rooms are double occupancy with baths on each floor. In half of the rooms, access to the Internet is available. The dormitories offer additional facilities such as a fitness gym, a playground, and TV rooms.

The following is a list of refectories, which can be found on dormitory premises (except the Mánesovy dormitory) and are also located at BUT faculties and Rector's Office:

- Meals Centre I – Pizzeria Gabriela at Kolejní 2, 612 00 Brno
- Refectory at Kolejní 2, 612 00 Brno
- Refectory at Purkyňova, Purkyňova 93, 612 62 Brno
- Restaurant Q at FME Technická 2, 616 69 Brno
- Staff dining room at FME Technická 2, 616 69 Brno
- Cafeteria at the BUT Centre at Antonínská 1, 601 90 Brno
- Refectory at Kounicova, Kounicova 46/48, 602 00 Brno
- Maruška Snack Bar at FEEC Technická 8, 616 69 Brno
- The "V" Restaurant at Veveří 95, 662 37 Brno

For further information see Tables XII. - 1 to XII.-6.

**Director**

PhDr. Alena Mizerová

**Sales, marketing**

Jana Novotná

**Electronic publishing**

Zdeněk Beránek, DiS

**BUT News editor**

Mgr. Igor Maukš

Defining and specifying editions and securing a share in the implementation of the editorial plan was among the foremost tasks. Out of the total titles published (241) at BUT, ninety-four were edited by VUTIUM Press. BUT could be successfully engaged in editing and publishing thanks to the transparent system distributing activities between the university as a whole and individual faculties, which edited conference proceedings, study materials, lecture notes, propagation leaflets, etc. VUTIUM Press prepared for publishing editions of monographs, scientific writings, textbooks, manuals, the BUT News monthly, proceedings, translated titles featuring a broad range of specialised subjects both in the classical book form and in electronic format.

Starting a Quantum edition series of classic works was among VUTIUM's major initiatives. For this series, publishing rights were acquired to works by E. Schrödinger: *What's Life? Mind and Matter With Autobiographical Sketches* with a foreword by R. Penrose and by E. Nagel and J. R. Newman: *Gödel's Proofs*. The text was updated and a preface written by D. R. Hofstadter (New York University Press).

The series is edited in co-operation with the Brno Centre of European Studies, which also participated in the edition of *Thoughts For the New Millennium*, an imposing collection of reflections and meditations by prominent personalities both in Czech and English versions. The book inauguration was accompanied by a lecture by Doc. Ing. Ivan M. Havel, CSc., Ph.D.: *Science – to be played or trifled with?*

VUTIUM was also involved in joint-editions with other editors: together with other Brno universities a *Universities As Catalysts of the Region's Economics* collection was published. For the Compostela Group of Universities, VUTIUM jointly with Masaryk University prepared the

publications Bach 2000 (Compostela Prize edition) and Co-operative Education in Europe and A Partnership between Government, Employer, Student and the University, edited by Maurits van Rooijen (European Issues edition).

Electronic publishing is used by VUTIUM for editing the Habilitation and Inauguration Lectures, abridged versions of doctoral theses and for publishing BUT News, the university monthly. In co-operation with Minolta, print on demand is offered for selected titles of lecture notes. Model chapters were prepared for a multimedia textbook of physics.

VUTIUM presented BUT's entire production within the Czech stands at international book fairs in Frankfurt am Main, Paris, and Bratislava. It also organised another joint exhibition of 13 universities at the Prague book fair, where a database of university production was presented.

The concentrated marketing strategy adopted by VUTIUM and its regular appearance at book exhibitions and fairs brought increased earnings and necessitated re-editions such as that of the textbook Digital Filtering, Signal Restoring and Analysis by J. Jan and the preparation of a reimpression of the textbook Physics.

For further information, see Chapter VIII. and Table VIII.-1.

### **Director**

Doc. Ing. Albert Bradáč, DrSc.

### **Deputy Director**

JUDr. Miroslav Kledus

### **The following programmes are available:**

a) lifelong-learning programme for forensic experts and candidates by virtue of Section 60 of Act no. 111/1998 Coll. in the following fields of study: road accidents, repairs and assessments of motor vehicles and machines, civil engineering and economics – real estate, enterprise, movable property, machinery, equipment, and motor vehicle appraisal, general rules of forensic engineering. In 2002, IFE had a total of 160 graduates, 3 four-semester and 4 one-semester courses were begun.

b) accredited doctoral forensic engineering programme in study field 39-47-9 – Forensic Engineering, offered by the faculties of civil and mechanical engineering in co-operation with the Institute; with 57 doctoral students studying at present and two having received their degrees in 2002.

One associate professor was appointed at the Institute of Forensic Engineering in January 2002.

### **Research, Conferences**

The Institute staff work on one Czech Grant Agency grant project concerned with the analysis of road accidents. In co-operation with The European Association for Research and Analysis of Accidents and The Association of Forensic Experts of the Czech Republic, a traditional conference of forensic experts was held in January 2002 followed by an experts' ball; in July, a conference was held on topical problems of forensic engineering related to road accident analysis as part of an accompanying programme to the Autotec 2002 fair.

### **Expert Opinions**

The Institute provides expert opinions in the areas of transport, electronics, power engineering, electrical engineering, economics, metallurgy, projecting, civil engineering, mechanical engineering, and water management. A total of 50 expert opinions were issued at the Institute in 2002.

The Institute is in permanent informal contact with Czech courts, prosecution and police bodies and with forensic medicine experts giving them professional advice.

## **Editing and Publishing**

The Institute edits a Forensic Engineering scientific journal at the Akademické nakladatelství CERM Brno, s.r.o. publishing house. This journal is intended for technical and economic forensic experts.

## **EFI certification authority**

The Institute has its certification authority, which is accredited by the Czech Accreditation Institute under serial number P 3072 as an unbiased and independent body for granting expert certifications under the ČSN-EN 45 013 standard. Two new experts were certified by the Institute in 2002 with another 77 candidates, for which a specialised training course was held. The certifications were passed by 32 experts in property assessment, three in the assessment of movables, machines and equipment, two in enterprise assessment, and one in road accident assessment.



### **Director**

Mgr. Nataša Jursová

On 1<sup>st</sup> January 2002, the Library Act came into force concerning libraries and conditions for running public libraries and providing information services. Under this law, the BUT libraries were registered with the Czech Ministry of Culture. Rector of BUT issued a directive defining the BUT library system.

The services provided by the BUT Central Library had been substantially improved, which was reflected in the number of users being increased by more than 60%.

Within the Information Education of Students programme, implemented at BUT since 1995, 2000 students attended the Basic Library and Information Literacy courses in 2002.

In the second half of the year, an Israeli Aleph500 library system was purchased. The library system purchasing project was worked out jointly for three universities: Brno University of Technology, Masaryk University in Brno, and University of Economics in Prague. By the end of 2002, training courses for system administrators were completed and preparations were under way to enable the migration of the existing data into the new system. In addition to its primary function, the Aleph500 library system should create an integrating environment for all the BUT libraries.

Co-operation continued with The University Of the Third Age by making the Central Library Study Rooms available for the senior students. Users across all generations mingled in the natural rhythm of teaching and study.

For more information, see Tables VII.-1 to VII.-4.

# Tables

**III. - 1 BUT SENIOR OFFICERS**

Prof. RNDr. Ing. Jan Vrbka, DrSc.	Rector
Prof. Ing. Jiří Kazele, CSc.	Deputy Rector, Vice-Rector in charge of external relations
Doc. RNDr. Petr Dub, CSc.	Vice-Rector in charge of education
Prof. RNDr. Josef Jančář, CSc.	Vice-Rector in charge of creative activities
Doc. Ing. Ladislav Štěpánek, CSc.	Vice-Rector in charge of development
Ing. Jaromír Pěnčík	Bursar
PhDr. Jiřka Vanýsková	Chancellor

**III.-2 BUT ACADEMIC SENATE** (from January 2002 to 29<sup>th</sup> October 2002)  
 – newly elected for the period from October 2002 to October 2005

Doc. Ing. František Zbořil, CSc.	Chairperson
Doc. Ing. Eva Münsterová, CSc.	Vice-Chairperson, Chairperson of the Academic Staff Chamber
Jaroslav Švec	Vice-Chairperson, Chairperson of the Student Chamber
<p>■ Academic Staff Chamber</p> <p>Mgr. Václav Božek, CSc. (FCE)          Dr. Ing. Petr Hanáček (FIT)          RNDr. Božena Kábelová (FC)          Doc. ak. mal. Ivan Kříž (FFA)          Ing. Jiří Kříž, Ph.D. (FBM)          Ing. Vladimír Kutnohorský, CSc. (FEEC)          Doc. Ing. Zdeňka Lhotáková, CSc. (FA)          Doc. Ing. Ivan Mašek, CSc. (FC)          Prof. Ing. Jindřich Melcher, DrSc. (FCE)          - since 12<sup>th</sup> March 2002          Ing. arch. Ladislav Mohelník (FA)          Doc. Ing. Eva Münsterová, CSc. (FSI)          Doc. MUDr. Vladimír Novotný, CSc. (FFA)          Doc. Ing. Vladimír Podroužek, CSc. (FEEC)          RNDr. Pavel Popela, Ph.D. – during his stay          abroad from 18<sup>th</sup> January to 15<sup>th</sup> August 2002          regularly deputized by Ing. Bohumil Sekanina,          CSc. (FSI)          PhDr. Iveta Šimberová (FBM)          Doc. Ing. František Zbořil, CSc. (FIT)</p>	<p>■ Academic Senate Working Committee</p> <p>legislation committee</p> <p>Mgr. Václav Božek, CSc. – <i>chairperson</i>          Ing. Vladimír Kutnohorský, CSc.          Marie Matulová          Doc. Ing. Zdeňka Lhotáková, CSc.          Doc. Ing. Ivan Mašek, CSc.          Doc. Ing. Eva Münsterová, CSc.          Jaroslav Švec</p> <p>economic committee</p> <p>Dr. Ing. Petr Hanáček          RNDr. Božena Kábelová          Tomáš Konečný          Ing. Jiří Kříž          Ing. arch. Ladislav Mohelník          Doc. Ing. Vladimír Podroužek, CSc. – <i>chairperson</i>          RNDr. Pavel Popela, Ph.D.</p> <p>■ AS representatives in BUT Construction Committee</p> <p>Prof. Ing. Jindřich Melcher, DrSc.          Ing. arch. Ladislav Mohelník</p>
<p>■ Student Chamber</p> <p>Lukáš Berta (FFA)          František Drtíl (FEEC)          Ing. Petra Dufková (FC)          Jiří Jeřábek (FBM)          Tomáš Konečný (FSI)          Marie Matulová (FCE)          Kamila Pohanková (FA)          Jaroslav Švec (FIT)</p>	<p>■ AS representatives in University Council</p> <p>Doc. Ing. Eva Münsterová, CSc.          – <i>UC vice-chairperson, board member</i>          Doc. Ing. Ivan Mašek, CSc.          – <i>UC assembly BUT representative</i>          Jiří Jeřábek          – <i>UC student chamber</i>          Jaroslav Švec – <i>UC student chamber</i>          – <i>substitute representative</i></p>

### III.-2 BUT ACADEMIC SENATE (from 29<sup>th</sup> October 2002 to 31<sup>st</sup> December 2002)

Doc. Ing. František Zbořil, CSc.	Chairperson
Mgr. Václav Božek, CSc.	Vice-Chairperson, Chairperson of the Academic Staff Chamber
Ing. Jaroslav Švec	Vice-Chairperson, Chairperson of the Student Chamber

Academic Staff Chamber	Academic Senate Working Committee	
<p>Mgr. Václav Božek, CSc. (FCE)            RNDr. Pavel Dobis, CSc. (FEEC)            Mgr. Richard Fajnor (FFA)            Ing. Ivana Groligová, CSc. (FBM)            Dr. Ing. Petr Hanáček (FIT)            Ing. Helena Hanušová, CSc. (FBM)            RNDr. Božena Kábelová (FC)            – from 12<sup>th</sup> November 2002            Ing. Vladimír Kutnohorský, CSc. (FEEC)            Doc. Ing. Zdeňka Lhotáková, CSc. (FA)            Doc. Ing. Ivan Mašek, CSc. (FC)            – since 12<sup>th</sup> March 2002            Doc. Ing. Eva Münsterová, CSc. (FSI)            Doc. MUDr. Vladimír Novotný, CSc. (FFA)            Doc. Ing. arch. Alois Nový, CSc. (FA)            Ing. Jiřina Omelková (FC)            RNDr. Pavel Popela, Ph.D. (FSI)            Prof. RNDr. Ing. Petr Štěpánek, CSc. (FCE)            Doc. Ing. František Zbořil, CSc. (FIT)</p>	legislation committee	<p>Mgr. Václav Božek, CSc.            Lenka Burgerová            Ing. Ivana Groligová, CSc.            Doc. Ing. Zdeňka Lhotáková, CSc.            – <i>chairperson</i>            Doc. Ing. Eva Münsterová, CSc.            Ing. Jiřina Omelková, CSc.            Hana Petrovská            Ing. Jaroslav Švec</p>
	economic committee	<p>František Drtil            Mgr. Richard Fajnor            Dr. Ing. Petr Hanáček            Ing. Helena Hanušová, CSc.            Ing. Petr Jurák            RNDr. Božena Kábelová            Ing. Vladimír Kutnohorský, CSc.            Doc. Ing. arch. Alois Nový, CSc.            RNDr. Pavel Popela, Ph.D.            Monika Sovíková            Prof. RNDr. Ing. Petr Štěpánek, CSc.            – <i>chairman</i></p>
Student Chamber	AS representatives in BUT Construction Committee	
<p>Lukáš Berta (FFA)            Lenka Burgerová (FA)            František Drtil (FEEC)            Mgr. Marcel Hádlík (FCE)            Ing. Petr Jurák (FSI)            Hana Petrovská (FC)            Monika Sovíková (FBM)            Ing. Jaroslav Švec (FIT)</p>		<p>Doc. Ing. Alois Nový, CSc.            Prof. RNDr. Ing. Petr Štěpánek, CSc.            Lenka Burgerová            Mgr. Marcel Hádlík</p>
	AS representatives in University Council	
		<p>Doc. Ing. Eva Münsterová, CSc. – <i>UC vice-chairperson, board member</i>            Doc. Ing. Ivan Mašek, CSc. – <i>UC assembly BUT representative</i>            Jiří Jeřábek – <i>UC student chamber</i>            Ing. Jaroslav Švec – <i>UC student chamber – substitute representative</i></p>

### III.-3 BUT SCIENTIFIC BOARD IN 2002

Name	Workplace	Scientific discipline
Prof. Ing. Stanislav Antonický	VŠB-TU Ostrava	transport technology
Prof. RNDr. Jaroslav Cihlář	BUT FME	materials science
Ing. Ivan Dobiáš, DrSc.	Academy of Sciences Prague	nonlinear dynamic systems
Doc. RNDr. Jiří Dostál, CSc.	UTB FT in Zlín	chemical physics
Prof. Ing. Milan Drdák, DrSc.	BUT FC	foodstuff chemistry
Prof. Ing. Rostislav Drochytka, CSc.	BUT FCE	construction materials engineering
Doc. RNDr. Petr Dub, CSc.	BUT FME	physics of condensed substances
Prof. Ing. arch. Jiří Gřegoričik, CSc.	BUT FA	died
Prof. Ing. Jan Maxmilián Honzík, CSc.	BUT FEEC	information technology
Prof. Ing. Tomáš Hruška, CSc.	BUT FEEC	information technology
Doc. Ing. Josef Chybík, CSc.	BUT FA	structures in architecture
Prof. RNDr. Josef Jančář, CSc.	BUT FC	macromolecular chemistry
Prof. Ing. Jiří Kazelle, CSc.	BUT FEEC	electrical and electronic technology
Ing. František Kubelka	Ministry of Industry and Commerce, Prague	metallurgy, power engin., civil engin.
Prof. RNDr. Miroslav Liška, DrSc.	BUT FME	applied physics
Prof. Ing. Ladislav Mušilek, CSc.	CTE in Prague	experimental physics
Doc. Ing. arch. Alois Nový, CSc.	BUT FA	architecture
Prof. Ing. Emanuel Ondráček, CSc.	BUT Centre	mechanics of solids, computer mechanics
Doc. Ing. Jaroslav Puchrík, CSc.	BUT FCE	theory and construction of transport structures
Doc. Ing. Karel Rais, CSc.	BUT FBM	economics and management of mechanical engineering
Prof. Ing. Petr Sába, CSc.	UTB FT in Zlín	materials engineering
Prof. PhDr. Jan Sedlák, CSc.	BUT FFA	architecture
Plk. Doc. Ing. Alexander Sikora, CSc.	Military Academy in Brno	machine and equipment design
Prof. Ing. František Schauer, DrSc.	BUT FC	physics of condensed substances
Prof. RNDr. Eduard Schmidt, CSc.	MU in Brno	physics of solids
Prof. Ing. Václav Sklenička, DrSc.	Academy of Sciences Prague	materials engineering
Prof. Ing. Jana Stávková, CSc.	MUAF in Brno	statistics
Dr. Ing. Markus Steiner	Škoda automobilová a.s. Mladá Boleslav	design technology and informatics
Prof. Ing. Jiří Stráský, CSc.	BUT FCE	concrete structures
Ing. Dan Ťok	Alstom Power s.r.o. Brno	power engineering

Name	Workplace	Scientific discipline
Prof. Ing. František Trnka, CSc.	UTB FaME in Zlín	enterprise economics
Doc. PhDr. Milan Uhde	Barvičova 85, Brno	theatrology
Prof. Ing. Josef Vačkář	BUT FME	manufacturing technology
Prof. Ing. Petr Vavřín, DrSc.	BUT FEEC	cybernetics, automation, measurement
Prof. RNDr. Ing. Jan Vrbka, DrSc.	BUT FME	mechanics of solids
Prof. RNDr. Stanislav Zima, Dr.Sc.	VFU in Brno	foodstuff chemistry
Prof. RNDr. Alexander Ženišek, DrSc.	BUT FME	mathematics – approximation and numerical methods

### III.-4 BUT BOARD OF TRUSTEES

■ Ing. Richard Kuba, CSc.	Chairperson	
■ Ing. Stanislav Bělehrádek	Vice-Chairperson	
■ Ing. Antonín Surka	Vice-Chairperson	
RNDr. Petr Duchoň	Ing. Vladimír Ohlídal, CSc.	Ing. Václav Petříček, CSc.
Doc. Ing. Josef Průša, CSc.	Doc. Ing. Karel Sellner, CSc.	Ing. Petr Karas, CSc.
Ing. Helena Šebková, CSc.	Doc. Ing. Jiří Volf, CSc.	Ing. Stanislav Juránek

### IV.-1a NUMBERS OF ACCREDITED PROGRAMMES AND BRANCHES OF STUDY

Branch Group	Master field group	Programmes/Branches of study			total Progr./Branches
		Bachelor's	Master's	Doctoral	
natural sciences	14	-	-	2/2	2/2
technical sciences	23 to 39	7/21	12/43	15/29	34/93
economics	62	1/1	2/2	1/1	4/4
artistic and cultural disciplines	82	1/7	1/7	-	2/14
BUT		9/29	15/52	18/32	42/113

**IV.-1b NUMBERS OF ACCREDITED PROGRAMMES AND BRANCHES OF STUDY BY FACULTIES**

faculty	Bachelor's		Master's		Ph.D.		total	
	programmes	branches	programmes	branches	programmes	branches	programmes	branches
FCE	-	-	2	7	3	9	5	16
FME	2	11	4	24	7	7	13	42
FEEC	1	5	1	5	1	7	3	17
FA	1	1	1	1	1	2	3	4
FBM	1	1	1	2	1	1	3	4
FC	2	3	4	5	4	4	10	12
FFA	1	7	1	7	-	-	2	14
FIT	1	1	1	1	1	2	3	4
total	9	29	15	52	18	32	42	113

**IV.-2a STUDENT NUMBERS ON 31<sup>ST</sup> OCTOBER 2002** (numbers of initiated studies)

Branch Group	Master field group	Students in Programmes			total student number
		Bachelor's	Master's	Doctoral	
natural sciences	14	-	-	59	59
technical sciences	23 to 39	2 517	9 860	1 544	13 921
economics	62	522	885	98	1 505
artistic and cultural disciplines	82	171	84	-	255
BUT		3 210	10 829	1 701	15 740

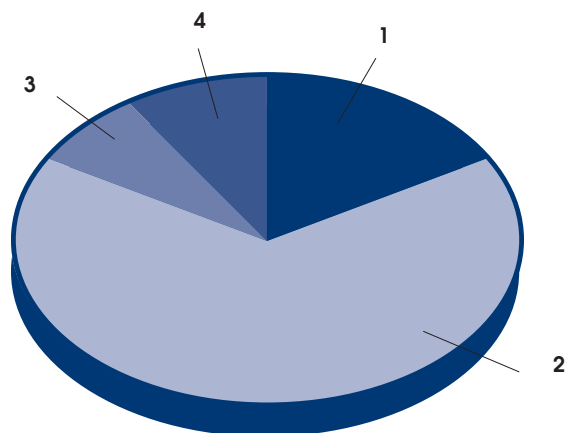
**IV.-2b TOTAL STUDENT NUMBERS ON 31<sup>ST</sup> OCTOBER 2002**

Programme Type		Study Form			total
		full-time	distance	combined	
Bc.	bachelor's degree	2 958	252	-	3 210
Ing./Mgr.	master's degree	8 848	52	439	9 339
Ing./Mgr.	master's degree	1 332	158	-	1 490
Ph.D.	doctoral	828	228	645	1 701
total		13 966	690	1 084	15 740



### Student numbers in Bachelor's, Master's, and Doctor's degree programmes

1 – Bachelor's	20 %
2 – Master's	60 %
3 – Follow-up Master's	9 %
4 – Doctoral	11 %



### IV.-2c STUDENT NUMBERS BY FACULTIES

faculty	Programme Type			total
	bachelor's degree	master's degree	doctoral	
FCE	-	3 831	429	4 260
FME	947	2 939	586	4 472
FEEC	852	1 620	326	2 798
FA	318	196	54	568
FBM	522	885	98	1 505
FC	56	621	118	795
FFA	171	84	-	255
FIT	344	653	90	1 087
total	3 210	10 829	1 701	15 740

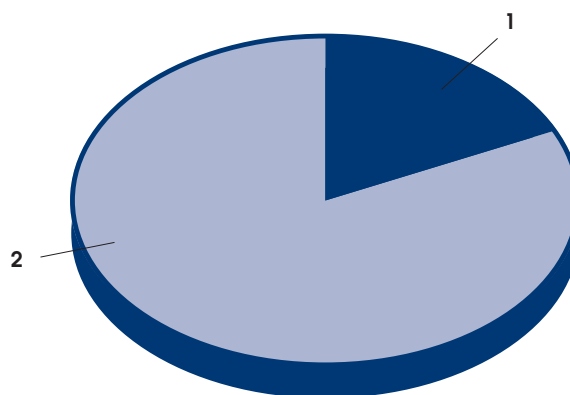
#### IV.-2d STUDENT NUMBERS BY PROGRAMMES

faculty	Programme code/name	men	women	Study Form			total
				full-time	distance	combined	
FCE	3607T - Civil Engineering	2841	731	3133	-	439	3572
	3646 T - Geodesy and Cartography	149	110	259	-	-	259
	3607T - Civil Engineering	269	112	184	-	197	381
	3646T - Geodesy and Cartography	8	1	4	-	5	9
	3917V - Forensic Engineering	22	17	17	-	22	39
FME	2341R - Mechanical Engineering	877	68	711	235	-	946
	3901R - Applied Sciences in Engineering	1	-	1	-	-	1
	2301T - Mechanical Engineering	2713	226	2939	-	-	2939
	2302V - Machines and Equipment	212	8	114	-	106	220
	2303V - Manufacturing Technology	78	25	41	-	62	103
	3901V - Applied Sciences in Engineering	85	6	41	-	50	91
	3903V - Cybernetics and Control Systems	33	2	12	-	23	35
	3910V - Physical and Materials Engin.	79	12	45	-	46	91
	3913V - Application of Natural Sciences	25	4	16	-	13	29
	3917V - Forensic Engineering	17	-	6	-	11	17
FEEC	2612R - Electrical Engin. and Informatics	835	16	852	-	-	852
	2612T - Electrical Engin. and Informatics	1578	41	1620	-	-	1620
	2612V - Electric. Engin. and Informatics	313	13	180	146	-	326
FA	3501R - Architecture and Town Planning	189	129	318	-	-	318
	3501T - Architecture and Town Planning	118	78	196	-	-	196
	3501V - Architecture and Town Planning	31	23	10	-	44	54
FBM	6208R - Economics and Management	287	235	522	-	-	522
	6208T - Economics and Management	509	376	727	158	-	885
	6208V - Economics and Management	63	35	32	-	66	98
FC	2801R - Chemistry and Chemic. Technol.	25	31	40	16	-	56
	2805T - Chemistry and Technology of Environmental Protection	34	34	63	5	-	68
	2806T - Consumer Chemistry	11	48	59	-	-	59
	2808T - Material Chemistry and Technol.	162	235	355	42	-	397
	2901T - Chemistry and Technol. of Foodstuff	28	69	92	5	-	97

faculty	Programme code/name	men	women	Study Form			total
				full-time	distance	combined	
	1404V - Physical Chemistry	16	17	24	9	-	33
	1405V - Macromolecular Chemistry	12	14	17	9	-	26
	2805V - Chemistry and Technology of Environmental Protection	15	27	18	24	-	42
	3911V - Materials Science	14	3	6	11	-	17
FFA	8206R - Visual Art	88	83	171	-	-	171
	8206T - Visual Art	41	43	84	-	-	84
FIT	2612R - Electrical Engin. and Informatics	333	11	344	-	-	344
	2612T - Electrical Engin. and Informatics	634	19	653	-	-	653
	2612V - Electrical Engin. and Informatics	89	1	61	29	-	90
BUT		12834	2903	690	689	1084	15740

### Women Studying at BUT

- 1 – 18 % women  
2 – 82 % men



### IV.-3a NUMBER OF DROP-OUTS

Branch Group	Master field group	Students in Programmes			total student number
		Bachelor's	Master's	Doctoral	
natural sciences	14	-	-	-	-
technical sciences	23 to 39	261	1 365	137	1 763
economics	62	37	91	32	160
artistic and cultural disciplines	82	4	2	-	6
BUT		302	1 458	169	1 929

**IV.-3b NUMBERS AND PERCENTAGE OF FAILING STUDENTS BY FACULTIES**

(students enrolled in the academic year 2001/2002)

faculty	Bachelor's programmes			Master's programmes			Doctoral programmes		
	enrolled	failed	%	enrolled	failed	%	enrolled	failed	%
FCE	-	-	-	3 630	420	11.57	343	34	9.91
FME	833	205	24.61	2 965	475	16.02	575	54	9.39
FEEC	75	2	2.67	2 970	324	10.91	380	29	7.63
FA	310	19	6.13	205	1	0.49	65	9	13.85
FBM	461	37	8.03	816	91	11.15	132	32	24.24
FC	51	35	68.63	664	144	21.69	111	11	9.91
FFA	173	4	2.31	58	2	3.45	-	-	-
FIT	-	-	-	5	1	20.00	-	-	-
total	1 903	302	15.87	11 313	1 458	12.89	1 606	169	10.52

**IV.-4a GRADUATE NUMBERS** (from 1<sup>st</sup> January 2002 to 31<sup>st</sup> December 2002)

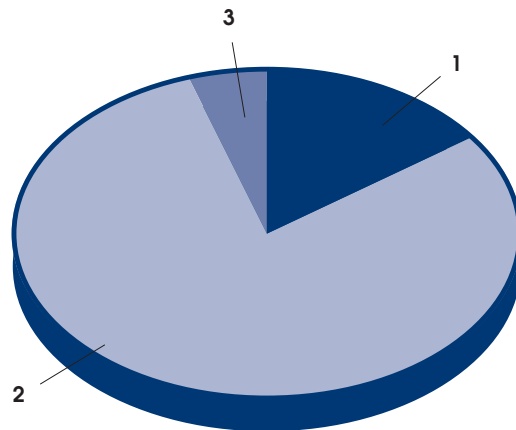
Branch Group	Master field group	Students in Programmes			total student number
		Bachelor's	Master's	Doctoral	
natural sciences	14	-	-	2	2
technical sciences	23 to 39	188	1 574	97	1 859
economics	62	110	266	20	396
artistic and cultural disciplines	82	42	25	-	57
BUT		340	1 865	119	2 314

**IV.-4b GRADUATE NUMBERS BY FACULTY**

faculty	Programme Type			total
	Bachelor's degree	Master's degree	Doctoral	
FCE	-	522	20	542
FME	73	494	40	607
FEEC	47	297	23	367
FA	62	58	6	126
FBM	110	266	20	396
FC	1	103	8	112
FFA	42	15	-	57
FIT	5	100	2	107
BUT	340	1 855	119	2 314

**Graduate Structure**

1 – Bachelor's	15 %
2 – Master's	80 %
3 – Doctoral	5 %



## IV.-4c GRADUATE NUMBERS BY PROGRAMMES

faculty	Programme code/name	men	women	foreign students	total
FCE	3607T	383	102	3	485
	3607V	15	3	2	18
	3646T	28	9	-	37
	3917V	1	-	-	1
	3646V	1	-	-	1
FCE total		428	114	5	542
FME	2301T	456	38	4	494
	2302V	17	1	1	18
	2303V	4	1	-	5
	2341R	70	3	1	73
	3901V	9	-	-	9
	3903V	3	-	-	3
	3910V	2	1	-	3
	3913V	1	-	-	1
	3917V	1	-	-	1
FME total		563	44	6	607
FEEC	2612R	47	-	-	47
	2612T	293	4	9	297
	2612V	22	1	1	23
FEEC total		362	5	10	367
FA	3501R	35	27	-	62
	3501T	31	27	-	58
	3501V	4	2	-	6
FA total		70	56	-	126
FBM	6208R	60	50	1	110
	6208T	150	116	3	266
	6208V	13	7	-	20
FBM total		223	173	4	396
FC	1405V	1	1	-	2
	2801R	1	-	-	1
	2805T	5	18	-	23

faculty	Programme code/name	men	women	foreign students	total
	2805V	-	2	-	2
	2806T	5	14	-	19
	2808T	15	12	-	27
	2901T	7	27	-	34
	3911V	3	1	-	4
FC total		37	75	-	112
FFA	8206R	22	20	1	42
	8206T	8	7	-	15
FFA total		30	27	1	57
FIT	2612R	5	-	-	5
	2612T	100	-	1	100
	2612V	2	-	-	2
FIT total		107	-	1	107
BUT total		1 820	494	26	2 314

#### IV.-4d Ph.D. GRADUATES

Faculty	Name	Title of the thesis and name of the supervisor
FCE	Ing. Tomáš Adler	Optimization of aeration effects of gradual cascades in removing carbon dioxide from water. Supervised by Doc. Ing. Jaroslav Hlaváč, CSc.
FCE	Ing. Jiří Vondrák	Laser measurements using mirror symmetries of Fresnel diffraction. Supervised by Doc. RNDr. Miloslav Švec, CSc.
FCE	Ing. Luděk Brdečko	Modelling reinforced-concrete board-walled structures with reinforcing ribs considering the nonlinear behaviour of material. Supervised by Doc. Ing. Alois Materna, CSc.
FCE	Ing. Miloš Zich	Analysis of segmentally erected bridges with respect to differential shrinkage and shear lag. Supervised by Prof. Ing. Jiří Stráský, CSc.
FCE	Ing. Josef Piňos	Expert opinion on the price of an enterprise. Supervised by Doc. Ing. Miroslav Hoferek, CSc.
FCE	Ing. Aleš Dráb	Risk analysis of flooded areas. Supervised by Doc. Ing. Jaromír Říha, CSc.
FCE	Ing. Petr Cikrle	Diagnostics of construction failures - long-term monitoring of cracks in masonry and measuring of shifts. Supervised by Prof. Ing. Jiří Adámek, CSc.
FCE	Eng. Ahmed Ahmed Othman Roffa	Assessment of roads in the Libyan desert area. Supervised by Doc. Ing. Jan Kudrna, CSc.

Faculty	Name	Title of the thesis and name of the supervisor
FCE	Ing. Tomáš Vymazal	Risk management in building as viewed by the manufacturer. Supervised by Doc. Ing. Vojtěch Mencl, CSc.
FCE	Ing. David Vranek	Automated design of daylight, artificial and mixed lighting. Supervised by Mgr. Václav Božek, CSc.
FCE	Ing. Hynek Janků	Behaviour of the "Reinforced ground structure " system. Supervised by Doc. Ing. Kamila Weiglová, CSc.
FCE	Ing. Jiří Bošťík	Stability of pillar areas of underground constructions. Supervised by Ing. Ferydun Nazari, CSc.
FCE	Ing. Tomáš Julínek	GIS for a mathematical model of water quality in a river network. Supervised by Doc. Ing. Jaromír Říha, CSc.
FCE	Ing. Miloš Kalousek	Possibilities of increasing the thermal resistance of special-shaped brick masonry. Supervised by Mgr. Václav Božek, CSc.
FCE	Ing. Robert Kaděrka	State of damage and assessment of operability of the 2nd and 3rd class road network in the Czech republic. Supervised by Doc. Ing. Jan Kudrna, CSc.
FCE	Ing. Věra Dvořáková	Using energy-gypsum in building materials industry. Supervised by Doc. Ing. Marcela Fridrichová, CSc.
FCE	RNDr. Jindřiška Svobodová	Low-cost low-energy house. Supervised by Doc. RNDr. Ing. Stanislav Šťastník, CSc.
FCE	Ing. Radoslav Rusina	Method of stochastic finite elements. Supervised by Doc. Ing. Drahomír Novák, DrSc.
FCE	Ing. Jitka Šubová	Using expert systems for intelligent support of WWTP management. Supervised by Doc. Ing. Petr Hlavínek, CSc.
FCE	Ing. Jaroslav Šefc	Construction companies in economic neighbourhood - strategic planning. Supervised by Doc. Ing. Bohumil Puchýř, CSc.
FME	Ing. Petr Čížek	Model of burning liquid fuel in the combustion chamber of a SAFÍR turbine. Supervised by Prof. Ing. Miroslav Jícha, CSc.
FME	Ing. Lubomír Houfek	Analysis of dynamic properties of rotor systems with magnetic couplings. Supervised by Doc. Ing. Eduard Malenovský, DrSc.
FME	Ing. Tomáš Hubáček	Interferometric research of thermal fields in a microclimate. Supervised by Doc. Ing. Eva Janotková, CSc.
FME	Ing. Jan Chmelík	Demands of bodies in charge of criminal proceedings on expert opinions as compared with the forensic experts' possibilities. Supervised by Prof. JUDr. Ing. Viktor Porada, DrSc.



Faculty	Name	Title of the thesis and name of the supervisor
FME	Ing. Bronislav Janda	Coherence of reliability and life cycle of rotating bearing elements with external conditions. Supervised by Doc. Ing. Miroslav Škopán, CSc.
FME	Ing. Petr Koláček	Optimization of radiation protection in a nuclear power-plant. Supervised by Prof. Ing. Oldřich Matal, CSc.
FME	Ing. Petr Martinák	Efficient use of utility systems in the process industry. Supervised by Prof. Ing. Petr Stehlík, CSc.
FME	Ing. Radim Puchýř	Thermal treatment of wastes - simulation and application. Supervised by Prof. Ing. Petr Stehlík, CSc.
FME	Ing. Roman Štulíř	Equipment for thermal treatment of waste – heat exchanger. Supervised by Prof. Ing. Petr Stehlík, CSc.
FME	Ing. Oskar Zemčik	Change of properties of antifriction bearing orbits as a result of roller burnishing application. Supervised by Prof. Ing. Karel Kocnan, DrSc.
FME	RNDr. Libor Žák	Clustering of vaguely defined objects. Supervised by Doc. RNDr. Zdeněk Karpíšek, CSc.
FME	Ing. Luboš Náhlík	Fatigue crack propagation near an interface of two elastic materials. Supervised by Prof. RNDr. Zdeněk KnésL, CSc.
FME	Ing. Jan Jedelský	Evaluation of partial noise and vibration sources of the SI engine. Supervised by Doc. Ing. Milan Štoss, CSc.
FME	Ing. František Procházka	Stability and bifurcation of equilibrium states of nonlinear dynamic systems. Supervised by Prof. Ing. Ctirad Kratochvíl, DrSc.
FME	Ing. Zdeněk Říha	Fluidic nozzle. Supervised by Prof. Ing. František Pochylý, CSc.
FME	Ing. Jindřich Veselý	Flow in Pelton turbines. Supervised by Prof. Ing. František Pochylý, CSc.
FME	Ing. Josef Veverka	Evaluation of effects on the contact behaviour of the rope and the groove of the traction disc. Supervised by Doc. Ing. Břetislav Mynář, CSc.
FME	Ing. Hynek Hadraba	Functionally gradient ceramic materials. Supervised by Prof. RNDr. Jaroslav Cihlár, CSc.
FME	Ing. Přemysl Hobza	Aeroelastic certificate of an aircraft. Supervised by Prof. Ing. Antonín Pištěk, CSc.
FME	Ing. Jan Klusák	Linear elastic and fracture of a V-notch. Supervised by Prof. RNDr. Zdeněk KnésL, CSc.
FME	Ing. Drahošlav Kolář	Macroeconomic models of forecasts of operational performances in civil aviation. Supervised by Prof. Ing. Ludvík Kulčák, CSc.
FME	Ing. Radek Vlach	Ventilation control of an electric machine using artificial intelligence. Supervised by Doc. Ing. Čestmír Ondrušek.

Faculty	Name	Title of the thesis and name of the supervisor
FME	Ing. Eva Schmidová	Improving the useful properties of rail material. Supervised by Prof. Ing. Jiří Švejcar, CSc.
FME	Ing. Tomáš Pyrochta	Designing testing tools and methods of applying information systems in a client/server environment. Supervised by Doc. Ing. Branislav Lado, CSc.
FME	Ing. Karel Kunz	Application of C/epoxy prepregs for reinforcing and repairs of aluminium structures. Supervised by Doc. Ing. Josef Klement, CSc.
FME	Ing. Libor Kovár	Evaluation of deformation behaviour of material during cutting based on stability and instability of plastic deformation and shear stress in the primary region of plastic deformation. Supervised by Prof. Ing. Bohumil Bumbálek, CSc.
FME	Ing. Heruuga Tumurbaatar	Tribologic assessment of wear depending on operational conditions. Supervised by Doc. Ing. Dušan Kolář, CSc.
FME	Ing. Pavel Boucník	Simulating a microstructure to achieve the desired properties. Supervised by Doc. Ing. Jaroslav Čech, CSc.
FME	Ing. František Bradáč	Methods of optical inspection and their application in mechanical engineering production. Supervised by Doc. Dr. Tech. Ing. Lubomír Vašek, CSc.
FME	Ing. Pavel Částka	Teamwork Development in a Traditional Manufacturing Organisation - A Holistic Perspective. Supervised by Doc. Ing. Pavel Bělohoubek, CSc.
FME	Ing. Vladimír Dumek	Multicriteria evaluation of variants in computer networks. Supervised by Prof. Ing. Miloš Stěpánek, DrSc.
FME	Ing. Jana Jarošová	Mathematical and statistical model of optimizing the measuring and evaluation of the tooled surface. Supervised by Doc. Ing. Jiří Pernikář, CSc.
FME	Ing. Milan Kořísta	Membrane condensation – a numeric solution. Supervised by Prof. Ing. Miroslav Jícha, CSc.
FME	Ing. Radek Lekeš	Structural analysis of the screw – bone tissue system. Supervised by Prof. Ing. Přemysl Janiček, DrSc.
FME	Ing. Ingrid Míková	Stress and its influence on providing flight operational services. Supervised by Prof. Ing. Ludvík Kulčák, CSc.
FME	Ing. Libor Pantělejev	Cyclic plasticity at high mean stresses. Supervised by Doc. RNDr. Ludvík Kunz, CSc.
FME	Ing. Pavel Hlavoň	Computing and experimental analysis of dynamic properties of rotor systems with hydrodynamic absorbers. Supervised by Doc. Ing. Eduard Malenovský, DrSc.
FME	Ing. Martin Komárek	Numeric solution of complex configuration flow in aviation. Supervised by Prof. Ing. Karol Fil'akovský, CSc.

Faculty	Name	Title of the thesis and name of the supervisor
FME	Ing. Ivo Jebáček	Flight strength measurements. Supervised by Prof. Ing. Antonín Pištěk, CSc.
FME	Ing. Viktor Bělák	Determining the service life of a tool for processing ceramic materials. Supervised by Doc. Ing. Imrich Lukovics, CSc.
FEEC	Ing. Leoš Chalupa	Sensorless control techniques for a brushless DC motor - particularly oriented towards low-cost drives. Supervised by Prof. Ing. Jiří Skalický, CSc.
FEEC	Ing. Vítězslav Novák	Research of advanced electrode materials. Supervised by Doc. Ing. Jiří Vondrák, DrSc.
FEEC	Ing. Bohumil Straka	Methods of IDDQ measurements for testing CMOS integrated circuits. Supervised by Prof. Ing. Radimír Vrba, CSc.
FEEC	Ing. David Tkoč	A contribution to design and production of DSL modems. Supervised by Doc. Ing. Pavel Legát, CSc.
FEEC	Ing. Radim Višinka	On-fly phase resistance motor for sensorless based control techniques. Supervised by Doc. Ing. Josef Koláčný, CSc.
FEEC	Ing. Martin Zadražil	Non-charging electron microscopy. Supervised by RNDr. Luděk Frank, DrSc.
FEEC	Ing. Petr Král	Analysis of the dynamic properties of electric mechanical systems. Supervised by Doc. Ing. Cestmír Ondrůšek, CSc.
FEEC	Ing. Jan Kunát	Automated systems of measurement for electric machines. Supervised by Doc. Ing. Vítězslav Hájek, CSc.
FEEC	Ing. Jitka Káňová	Scanning microscopy at critical energy of electrons. Supervised by RNDr. Luděk Frank, DrSc.
FEEC	Ing. Josef Bradík	Expressing uncertainties in electromagnetic non-destructive diagnostics of quality. Supervised by Prof. Ing. Karel Hruška, DrSc.
FEEC	Ing. Martin Gilar	Selected applications of the holographic speckle method. Supervised by Doc. RNDr. Ladislav Peška, CSc.
FEEC	Ing. Petr Toman	Localization of the ground connection place in HV networks. Supervised by Doc. Ing. Evžen Haluzík, CSc.
FEEC	Ing. Luděk Žalud	Proximity laser scanner cross-correlation based methods for co-operative self-localization and map building. Supervised by Doc. Ing. František Šolc, CSc.
FEEC	Ing. Zdeněk Tobeš	Analog neural networks for the control of adaptive antennas. Supervised by Doc. Dr. Ing. Zbyněk Raida.
FEEC	Ing. Daniel Juřík	Collection of technological data in Ethernet networks. Supervised by Doc. Ing. Zdeněk Malec, CSc.

Faculty	Name	Title of the thesis and name of the supervisor
FEEC	Ing. Pavel Koktavý	Noise of microplasma in luminescent GaAsP diodes. Supervised by Doc. RNDr. Pavel Hruška, CSc.
FEEC	Ing. Martin Michálek	Detection of signal electrons in low-vacuum scanning microscopy. Supervised by Doc. Ing. Josef Jirák, CSc.
FEEC	Mgr. Jan Pavelka	Transport and noise characteristics of thin amorphous Ta205 layers. Supervised by Prof. RNDr. Ing. Josef Šíkula, DrSc.
FEEC	Ing. Jaroslav Hudec	Improving the quality of electric power supply by a three-stage overvoltage protection for power supply networks of up to 1000 V. Supervised by Prof. Ing. Karel Hruška, DrSc.
FEEC	Ing. Bohumil Klíma	Vector-oriented control of a synchronous machine with permanent magnets. Elimination of three-phase-current sensors using a model of the machine and compensating the nonlinearities of the inverter. Supervised by Prof. Ing. Jiří Skalický, CSc.
FEEC	Ing. Radim Kolář	Pre-processing medical ultrasound images. Supervised by Ing. Jiří Kozumplík, CSc.
FEEC	Ing. Karol Molnár	Applications of artificial neural networks in high-speed active network elements. Supervised by Doc. Ing. Vladimír Kapoun, CSc.
FEEC	Ing. Vojtěch Svoboda	The Influence of fast charging on the performance of VRLA batteries. Supervised by Doc. RNDr. Miroslav Cenek, CSc.
FIT	Ing. Richard Růžička	Formal approach to analyzing the testability of digital circuits at the RT level. Supervised by Doc. Ing. Zdeněk Kotásek, CSc.
FIT	Ing. Lukáš Sekanina	Component Approach to Evolvable Systems. Supervised by Doc. Ing. Vladimír Drábek, CSc.
FA	Ing. arch. Dana Novotná	Building Administrative Regulation in Historical Towns. Supervised by Doc. Ing. arch. Jarmila Ledinská, CSc.
FA	Ing. arch. Jakub Kynčl	Museum "What does a museum want to be?". Supervised by Prof. Ing. arch. Ivan Ruller.
FA	Ing. Zdeněk Chvátal	Microregions as the basis of the economic development of an area. Supervised by Prof. Ing. arch. Jiří Gřegorič, CSc.
FA	Ing. Roman Číhal	Acoustics of buildings – air and step sound-proofness. Supervised by Prof. Ing. Jiří Vaverka, DrSc.
FA	Ing. arch. Petr Parolek	Alternative forms of studio teaching. Supervised by Doc. Ing. arch. Alois Nový, CSc.

Faculty	Name	Title of the thesis and name of the supervisor
FA	Ing. arch. Blažena Hubáčková	Structures and materials in the architecture of functionalism. Supervised by Doc. Ing. arch. Jarmila Ledinská, CSc.
FC	Ing. Martin Weiter	Study of Electron Localised States in Organic Semiconductors. Supervised by Prof. Ing. František Schauer, DrSc.
FC	Mgr. Pavel Horváth	Study of photo luminescence in amorphous and organic semiconductors. Supervised by Prof. Ing. František Schauer, DrSc.
FC	Mgr. Jan Zídek	Compatibilization of the polypropylene/polyvinylchloride mixtures. Supervised by Doc. RNDr. Jaroslav Petrůj, CSc.
FC	Ing. Klára Částková	Chemical and biological properties of bioceramic materials. Supervised by Prof. RNDr. Jaroslav Cihlár, CSc.
FC	Ing. Petra Peterková	Modification of surface properties of polypropylene and its biocompatibilization by systems on the basis of atelocollagen. Supervised by Doc. Ing. Lubomír Lapčík, CSc.
FC	Ing. Jan Šponar	Possibilities of using water treatment plant wastes in silicate technologies. Supervised by Doc. Ing. Jaromír Havlica, CSc.
FC	Ing. Dana Čapounová	Use of pectolytic enzymes in viticulture technology. Supervised by Prof. Ing. Milan Drdák, DrSc.
FC	Mgr. Romana Kostrhounová	Determination of phenol and chlorophenols in surface water using spectro-photometry UV/VIS and HPLC after previous preconcentration by solid phase extraction. Supervised by Prof. RNDr. Lumír Sommer, DrSc.
FBM	Ing. Jaroslav Zlámal	Assessing the performance of internal processes at a manufacturing company and its organizational units. Supervised by Doc. Ing. Jan Solář, CSc.
FBM	Ing. Hana Pátková	Methods for judging the competitiveness of engineering companies using selected innovation activities. Supervised by Doc. Ing. Karel Mailer, CSc.
FBM	Ing. Robert Zich	Developing management as a factor building the competitiveness of a firm. Supervised by Prof. Ing. Petr Němeček, DrSc.
FBM	Ing. Pavla Staňková	Methodology of measuring the efficiency of advertising. Supervised by Doc. Ing. Alois Glogar, CSc.
FBM	Ing. Radek Kypsoň	Implementation methodology of e-logistics in vertical distribution chains with focus on small and middle-sized business. Supervised by Doc. Ing. Marie Jurová, CSc.
FBM	Ing. Josef Šunka	Assessment of a procurement information system. Supervised by Doc. Ing. Marie Jurová, CSc.

Faculty	Name	Title of the thesis and name of the supervisor
FBM	Ing. Petr Mandelík	Estimating the sensitiveness of individual branches in capital markets to the development of the entire market and business cycle. Supervised by Prof. Ing. Jiří Dvořák, DrSc.
FBM	Ing. Jiří Dvořák	Research of consumer demand with computer simulation. Supervised by Doc. Ing. Miloslav Keřkovský, CSc.
FBM	Ing. Věra Minaříková	Liquidation of capital companies from the accounting and tax standpoint. Supervised by Prof. Ing. Petr Němeček, DrSc.
FBM	Ing. Petr Valenta	Business and revenue models of electronic marketplaces on the Internet. Supervised by Prof. Ing. Jiří Dvořák, DrSc.
FBM	Ing. Stanislav Škapa	Proposal of non-Gaussian characteristics production process control. Supervised by Doc. Ing. František Bartes, CSc.
FBM	Mgr. Veronika Novotná	Optimization of share portfolio in conditions of BCPP. Supervised by Doc. Ing. Miloš Koch, CSc.
FBM	Ing. Marcela Kožená	The competitive ability of an enterprise while respecting a sustainable development strategy. Supervised by Doc. Ing. Miroslav Buchta, CSc.
FBM	Ing. Ivana Mandysová	Company management and the region. Supervised by Doc. RNDr. Bohdan Linda, CSc.
FBM	Ing. Petr Sodomka	Assessing the efficiency of ERP systems. Supervised by Prof. Ing. Zdeněk Molnár, CSc.
FBM	Ing. David Tuček	Effect of applying industrial engineering methods to increasing the competitiveness of Czech manufacturers, in particular, of Slováké strojírny, a .s. Supervised by Prof. Ing. František Trnka, CSc.
FBM	Ing. Josef Hajkr, MBA	Individual incubator model in the virtual world. Supervised by Prof. Ing. Jiří Dvořák, DrSc.
FBM	Ing. Ingrid Hradečná	Strategic quality management by the zero defect method. Supervised by Doc. Ing. František Bartes, CSc.
FBM	Ing. Viktor Ondrák	Resolving problems of secondary insolvency by mutual settlement of debts. Supervised by Doc. Ing. Miloš Koch, CSc.
FBM	Ing. František Šebek	Methods and tools of holding company management. Supervised by Prof. Ing. Petr Němeček, DrSc.

**IV.-5a NUMBER OF APPLICATIONS ON 31<sup>st</sup> OCTOBER 2002**

Field Group	Master field group code	Applications submitted	Candidates admitted	Candidates enrolled
natural sciences	14	29	24	24
technical sciences	23 to 39	11 904	6 946	4 216
economics	62	2 552	803	649
artistic and cultural disciplines	82	563	95	94
BUT		15 048	7 868	4 983

**IV.-5b NUMBER OF APPLICATIONS, NUMBER OF ADMITTED AND ENROLLED CANDIDATES BY FACULTY**

faculty	Bachelor's			Ing./Mgr.			Doctoral		
	applications	admitted	enrolled	applications	admitted	enrolled	applications	admitted	enrolled
FCE	-	-	-	3 031	1 759	1 044	156	135	124
FME	730	512	386	1 973	1 079	813	132	112	109
FEEC	2 414	2 174	904	30	15	12	87	77	77
FA	390	102	91	50	50	50	7	6	5
FBM	1 644	295	191	872	479	429	36	29	29
FC	74	46	33	638	388	201	29	24	24
FFA	508	43	42	55	52	52	-	-	-
FIT	2 145	464	340	17	6	6	30	21	21
BUT	7 905	3 636	1 987	6 666	3 828	2 607	477	404	389

**IV.-6 NUMBER OF LIFELONG-LEARNING PROGRAMMES AND COURSES REALISED**

fac./department	courses	lessons	participants
FCE	10	554	180
FME	24	2 421	780
FEEC	12	715	480
FA	2	67	115
FBM	4	587	315
FC	-	-	-
FFA	1	416	4
FIT	-	-	-
IFE	4	420	64

fac./department	courses	lessons	participants
CESA	3	502	20
CEAC	28	2 244	1 047
total	94	8 074	3 005

#### IV.-7 BUT INVOLVEMENT IN DEVELOPMENT PROGRAMMES FOR PUBLIC UNIVERSITIES

Development programmes for public universities	Projects continuing from 2001	Projects submitted in 2002	Projects accepted in 2002	Funding allocated in thousands of CZK
Programme developing Bachelor's degree programmes as an expression of support and implementation of the Bologna declaration and the Programme of support of selected study programmes	3	5	5	24 986
Programme supporting lifelong learning	1	7	6	1 497
Programme supporting public university student international mobility	-	6	6	715
Programme supporting study programmes guaranteed by public universities and implemented at higher professional schools.	2	-	-	6 294
Programme supporting the development of teacher educational programmes and other educational activities	-	3	1	937
Programme supporting introduction into teaching and management at public universities of information and communication technologies and methods	-	3	3	23 680
Program supporting comprehensive solutions of technological requirements given by generally binding regulations	-	1	1	2 330



Programme supporting integration of disabled students into study, equal opportunities for candidates from variously handicapped groups	-	1	1	1 438
total	6	26	23	61 877

#### IV.-8 BUT INVOLVEMENT IN THE UNIVERSITY DEVELOPMENT FUND PROGRAMMES

faculty	projects approved	Funding allocated in thousands of CZK		
		investment	non-investment	total
FCE	6	-	663	663
FME	21	3 565	1 951	5 516
FEEC	74	7 014	9 652	16 666
FA	14	2 522	1 395	3 917
FBM	1	-	94	94
FC	26	2 768	2 315	5 083
FFA	6	1 877	392	2 269
FIT	9	-	1 002	1 002
University depart.	5	4 632	907	5 539
total	162	22 378	18 371	40 749

#### IV.-9 SCHOLARSHIPS GRANTED IN 2002 (CZK)

faculty	merit scholarships	extraordinary scholarships	doctoral scholarships	supporting international students
FCE	1 259 560	320 950	13 552 717	-
FME	1 682 600	1 596 724	16 725 600	365 000
FEEC	509 200	1 818 061	14 132 628	378 840
FA	-	289 860	607 000	20 000
FBM	781 300	97 320	1 728 000	-
FC	-	841 980	4 155 220	95 000
FFA	-	125 000	-	122 000
FIT	66 000	1 235 190	3 873 776	141 500
BUT	4 298 660	6 325 185	54 774 941	1 122 340

#### IV.-10 SUMMARY OF PRIZES AWARDED TO STUDENTS AND GRADUATES IN 2002

C Rector's Prize to the best students		
	FCE	Ing. Lucie Stará
	FME	Ing. Tomáš Gazda
	FEEC	Ing. Martin Švirák
	FBM	Ing. Romana Nývltová
	FFA	MgA. Helena Štolfová
	FIT	Ing. Martin Švec
Rector's Prize on the occasion of BUT 100th anniversary		
■ To BUT Bachelor's and Master's degree students for outstanding study results and other activities promoting science	FA	Ing. arch. Pavel Klein
	FC	Ing. Vanda Zachovalová
	FFA	MgA. Marie Musilová
■ To doctoral students for outstanding results in research education and contributions to science development and in activities promoting BUT	FCE	Ing. Dita Baničová
	FME	Ing. Luboš Náhlík, Ph.D.
	FIT	Ing. Richard Růžička
■ To young teachers (up to 35 years) for outstanding results in teaching and research.	FCE	Ing. Pavel Schmidt, Ph.D.
	FEEC	Doc. Ing. Ivio Provazník, Ph.D.
	FBM	Ing. Stanislav Škapa
Josef Hlávka Prize		
	FCE	Ing. Miroslav Vořechovský
	FME	Ing. Jiří Konrád
	FEEC	Ing. Jaroslav Láčik
	FC	Ing. Petr Mareček
	FFA	MgA. David Moješčík
SIEMENS 2001 Prize		
	FEEC	Ing. Pavel Kučera
		Ing. Jan Ludvík
		Ing. Radek Vlach
	FIT	Ing. Luděk Crha
		Ing. Josef Strnadel

PRECIOSA foundation prize	
FME	Martin Kozák
	Luděk Lovicar
	Jan Müller
	Jakub Myška
FC	Václav Šebesta
	Jaromír Žíla

**V.-1 DOMESTIC PROGRAMMES AND PROJECTS** – numbers of projects/accepted (in thousands of CZK)

faculty	FR VŠ	GA ČR	MŠMT-LP	MŠMT-LI	total
FCE	7/663	30/13 670	-	-	37/14 333
FME	21/5 516	59/20 017	-	-	80/25 533
FEEC	74/16 543	36/18 706	4/1 661	1/2 089	115/38 999
FA	14/3 917	2/953	-	-	16/4 870
FBM	1/94	6/1 249	-	-	7/1 343
FC	26/5 083	5/1 927	-	-	31/7 010
FFA	6/2 497	-	-	-	6/2 497
FIT	9/1 002	9/3 420	-	-	18/4 422
University depart.	5/5 539	2/804	-	-	7/6 343
total	163/40 854	149/60 746	4/1 661	1/2 089	317/105 350

FRVS

University Development Fund

MSMT-LI

Information resources for research and development

MSMT-LP

Dissemination of research outcomes among the Czech public

GA CR

Grant Agency of the Czech Republic

**V.-2 DOMESTIC PROGRAMMES AND PROJECTS (not funded by the Ministry of Education)**

– numbers of projects / accepted (in thousands of CZK)

faculty	GA AV ČR	MPO	MDS	MZD	MŽP	total
FCE	-	3/2 286	1/100	1/103	-	5/2 489
FME	1/61	23/50 380	-	2/166	1/575	27/51 182
FEEC	3/223	8/3 265	-	1/119	-	12/3 607
FA	-	-	-	-	-	-
FBM	-	-	-	-	-	-
FC	1/182	-	-	-	-	1/182
FFA	-	-	-	-	-	-
FIT	-	-	-	-	-	-
Univ.dep.	-	-	-	-	-	-
total	5/466	34/55 931	1/100	4/388	1/575	45/57 460

GA AV ČR

MPO

MDS

MZD

MŽP

Grant Agency of Czech Academy of Sciences

Ministry of Industry and Commerce

Ministry of Transport and Communications

Ministry of Public Health

Ministry of Environment

**V.-3 RESEARCH DESIGNS (in thousands of CZK)**

faculty	number of project	funding allocated (based on agreement with MSMT)		
		investment	non-investment	total
FCE	4	4 412	22 322	26 734
FME	5	13 826	35 551	49 377
FEEC	4	4 392	21 624	26 016
FA	1	1 600	1 501	3 101
FBM	2	401	3 825	4 226
FC	2	1 524	4 411	5 935
FIT	1	800	5 558	6 358
total	19	26 955	94 792	121 747

Note: The Czech Ministry of Education (MSMT) has accepted two new research designs (FEEC and FME) to receive funding in 2002

**V.-4 THE "RESEARCH CENTRES" PROJECTS** (in thousands of CZK)

Faculty	Centre name	Person responsible	Funding received from Czech ME			Organizer
			investment	non-invest.	total	
FME	Centre of Aviation and Space Research	Prof. Ing. Antonín Píštěk, CSc.	13.850	26.184	40.034	BUT
Total			13.850	26.184	40.034	
Person co-responsible						
FME	Centre for Mechanical Engineer. and Technology	Doc. Ing. Zdeněk Kolíbal, CSc.	-	2.000	2.000	CTU in Prague
FEEC	Research Centre of Applied Cybernetics	Prof Petr Vavřín, DrSc.	489	4.273	4.762	CTU in Prague
Total			489	6.273	6.762	

**V.-5 ASSOCIATE PROFESSORS APPOINTED AT BUT IN 2002**

Faculty	Name		Appoint. date
FCE	Bradáč Albert, Doc. Ing. DrSc.	forensic engineering	22/01/02
FME	Horský Jaroslav, Ing. CSc.	applied mathematics	08/02/02
FBM	Chalupský Vladimír, Ing. CSc.	branch economics and management	12/02/02
FA	Šindlar Jiří, Ing. arch. CSc.	architecture	18/02/02
FEEC	Provazník Ivo, Ing. Ph.D.	electronics and communication technology	05/03/02
FME	Čech Vladimír, RNDr. Ph.D.	materials engineering	19/03/02
FC	Dolejš Petr, Ing. CSc.	chemistry and environmental technology	19/03/03
FBM	Rais Karel, Doc. Ing. CSc.	branch economics and management	02/04/02
FME	Horák Jiří, RNDr. Ing. CSc.	applied mathematics	26/04/02
FME	Chmelík Radim, RNDr. Ph.D.	applied physics	26/04/02
FME	Zemánek Pavel, RNDr. Ph.D.	applied physics	26/04/02
FME	Grmela Lubomír, Ing. CSc.	applied physics	30/05/02
FME	Simeon Simeonova, Ing. CSc.	design and process engineering	30/05/02
FME	Bumbálek Leoš, Ing. PhD.	manufacturing technology	30/05/02
FME	Kříž Hubert, RNDr. DrSc.	water management and water structures	06/05/02
FEEC	Ondrůšek Čestmír, Doc. RNDr. CSc.	heavy-current and power engineering	10/09/02

Faculty	Name		Appoint. date
FBM	Lukášová Růžena, PhDr. CSc.	branch economics and management	05/11/02
FCE	Čírtek Ladislav, Ing. CSc.	theory and design of constructions	08/11/02
FCE	Němec Ivan, Ing. CSc.	theory and design of constructions	08/11/02
FME	Hart Martin, Ing. Ph.D.	design and process engineering	02/12/02
FME	Křupka Ivan, Ing. Ph.D.	design and process engineering	02/12/02
FCE	Smutný Jaroslav, Ing. Dr.	theory and design of constructions	13/12/02
FCE	Šlézinger Miloslav, Ing. Dr.	water management and water structures	13/12/02
FCE	Fajkoš Antonín, Doc. Ing. CSc.	theory and design of building constructions	14/02/02

#### V.-6 PROFESSORS APPOINTED AT BUT IN 2002

Faculty	Name		Appoint. date
FME	Kolíbal Zdeněk, Doc. Ing. CSc.	design and process engineering	15/05/02
FCE	Štěpánek Petr, Doc. RNDr. Ing. CSc.	theory and design of constructions	15/05/02
FEEC	Dědek Lubomír, Doc. Ing. CSc.	theoretic electrical engineering	15/05/02
FEEC	Švéda Miroslav, Doc. Ing. CSc.	computing technology and science	15/05/02
FME	Vlach Bohumil, Doc. RNDr. CSc.	materials sciences and engineering	01/11/02
FC	Fiala Jaroslav, Doc. Ing. DrSc.	materials sciences and engineering	01/11/02
FME	Ballo Igor, Doc. Ing. DrSc.	applied mechanics	01/11/02
FC	Vondruška Milan, Doc. Ing. CSc.	chemistry and technology of environment	01/11/02

#### V.-7 HONORARY DOCTORATES AWARDED IN 2002

Name		Award date
Prof. Hidde Brongersma	Professor at Eindhoven University of Technology leading expert in physics and chemistry of surfaces	15/11/02
Doc. Detlef Schmidt	member of Volkswagen Group top management leading expert in management of production companies	15/11/02

**BUT GOLD MEDALS AWARDED IN 2002**

Name		Award date
Doc. Włodzimierz Karaszewski	associate professor at Nicolaus Copernicus University in Torun	06/09/02
Prof. Ing. Antonín Pištěk, CSc.	director of Aviation Institute of the BUT Faculty of Mechanical Engineering	04/11/02

**V.-8 UNIVERSITY INVOLVEMENT IN RESEARCH AND DEVELOPMENT PROGRAMMES**

National Programmes					
Programme	LS	LN	LP	LI	
Number of projects	-	3	4	1	
Funding received	-	46 796	1 661	2 089	
International Programmes					
Programme	OE	OC	OK	LA	ME
Number of projects	6	16	19	3	10
Funding received	4 508	6 687	13 943	464	2 048
Other Programmes					
Programme	GA ČR	GA AV ČR	Internal programmes	From other Ministries	Others
Number of projects	149	5	-	40	-
Funding received	60 746	466	-	56 994	-

LS – Departmental research

LN – Research Centres

LP – Presentation of research results

GA-AV Grant Agency of the Czech Academy of Sciences

LI – information sources for research and development

OK – 5th Guideline Programme

GA CR – Czech Grant Agency

LA – Ingo

ME – contact

OE – Eureka

OC – Cost

**V.-8a INTERNATIONAL PROGRAMMES**

programme		OC	OE	OK	ME	LA
FCE	number of projects	-	-	6	-	-
	funding in thousands of CZK	-	-	3 660	-	-
FME	number of projects	13	5	7	2	2
	funding in thousands of CZK	5 237	3 068	2 785	414	415
FEEC	number of projects	1	1	1	6	1
	funding in thousands of CZK	350	1 440	1 237	1 143	49
FA	number of projects	-	-	-	1	-
	funding in thousands of CZK	-	-	-	99	-
FBM	number of projects	-	-	1	-	-
	funding in thousands of CZK	-	-	2 312	-	-
FC	number of projects	2	-	-	1	-
	funding in thousands of CZK	1 100	-	-	392	-
FIT	number of projects	-	-	1	-	-
	funding in thousands of CZK	-	-	2 258	-	-
CŠP	number of projects	-	-	3	-	-
	funding in thousands of CZK	-	-	1 691	-	-
total number of projects		16	6	19	10	3
total funding		6 687	4 508	13 943	2 048	464

OE – EUREKA projects  
OC – COST projects  
ME – KONTAKT projects

OK – EUPRO projects (European projects)  
LA – INGO projects



**V.-8b NOT INCLUDED PROJECTS (Aktion, mobility)**

Faculty	Type of co-operation	Number
FCE	Aktion, Czech-Polish, Czech-Slovenian, Czech-Norwegian, Visegrad, Czech-Hungarian	9
FME	Aktion, Czech-Polish, Czech-Slovenian, Czech-Slovakian, Czech-German, Czech-Austrian	10
FEEC	Czech-Austrian, Czech-Slovenian, NATO/ARW	3
FA	Aktion	1
FBM	Aktion	1
FC	Czech-Italian, Czech-Slovak	4
Univ. depart.	Visegrad, some mobilities within the 5th Framework Programme	4
BUT total		32

**V.-8c INTERNATIONAL RESEARCH CO-OPERATION PROJECTS**

programme		COST	EUREKA	4. GP	5. GP	KONTAKT	INGO	AKTION	others	total
FCE	number of projects	-	-	-	6	-	-	1	8	15
	funding in thous. of CZK	-	-	-	3 660	-	-	224	mobility	3 884
FME	number of projects	13	5	-	7	2	2	2	8	39
	funding in thous. of CZK	5 237	3 068	-	2 785	414	415	7	mobility	11 926
FEEC	number of projects	1	1	-	1	6	1	-	3	13
	funding in thous. of CZK	350	1 440	-	1 237	1 143	49	-	mobility	4 219
FA	number of projects	-	-	-	-	1	-	1	-	2
	funding in thous. of CZK	-	-	-	-	99	-	25	-	124
FBM	number of projects	-	-	-	1	-	-	1	-	2
	funding in thous. of CZK	-	-	-	2 312	-	-	3	-	2 312
FC	number of projects	2	-	-	-	1	-	-	4	7
	funding in thous. of CZK	1 100	-	-	-	392	-	-	mobility	1 492
FIT	number of projects	-	-	-	1	-	-	-	-	1
	funding in thous. of CZK	-	-	-	2 258	-	-	-	-	2 258

programme		COST	EUREKA	4. GP	5. GP	KONTAKT	INGO	AKTION	others	total
UD	number of projects	-	-	1	2	-	-	-	4	7
	funding in thous. of CZK	-	-	670	1 021	-	-	-	mobility	1 691
BUT total number of projects		16	6	1	18	10	3	5	27	86
BUT total funding in thous. of CZK		6 687	4 508	670	13 273	2 048	464	259	mobility	27 906

#### V.-9 PUBLISHING ACTIVITY OF BUT STAFF IN 2002

faculty	J	P	B	C	D	V	T	A
FCE	134	-	30	92	439	47	-	2
FME	112	6	8	7	503	26	2	12
FEEC	185	-	2	15	758	85	-	41
FA	35	-	4	7	28	10	-	15
FBM	18	-	15	2	211	22	-	6
FC	53	4	3	3	160	-	-	-
FFA	12	-	-	4	-	-	-	-
FIT	13	1	-	1	144	5	3	-
total	562	11	62	131	2 243	195	5	76

*J* – paper in a specialised journal

*D* – paper in conference proceedings

*T* – prototype, pilot plant, tested technology (in manufacture etc.)

*V* – reviewed research report for state administration

*B* – specialised monograph

*C* – chapter in a book (not in proceedings)

*P* – patent

*A* – research presentation, website design etc

**V.-10 UNIVERSITY INVOLVEMENT IN INDIVIDUAL R&D PROGRAMMES**

national programmes					
programme	LS	LN	LP	LI	
number of projects	-	3	4	1	
funding	-	46 796	1 661	2 089	
international programmes					
programme	OE	OC	OK	LA	ME
number of projects	6	16	19	3	10
funding	4 508	6 687	13 943	464	2 048
other programmes					
programme	GA ČR	GA AV ČR	internal programmes	from others ministries	others
number of projects	149	5	-	40	-
funding	60 746	466	-	56 994	-

\* two co-organiser's projects

LS – Departmental research

LN – Research Centres

LP – Presentation of research results

LI – information sources for research and development

GA AV ČR – Grant Agency of the Academy of Sciences

GA ČR – Grant Agency of the Czech Republic

ME – contact

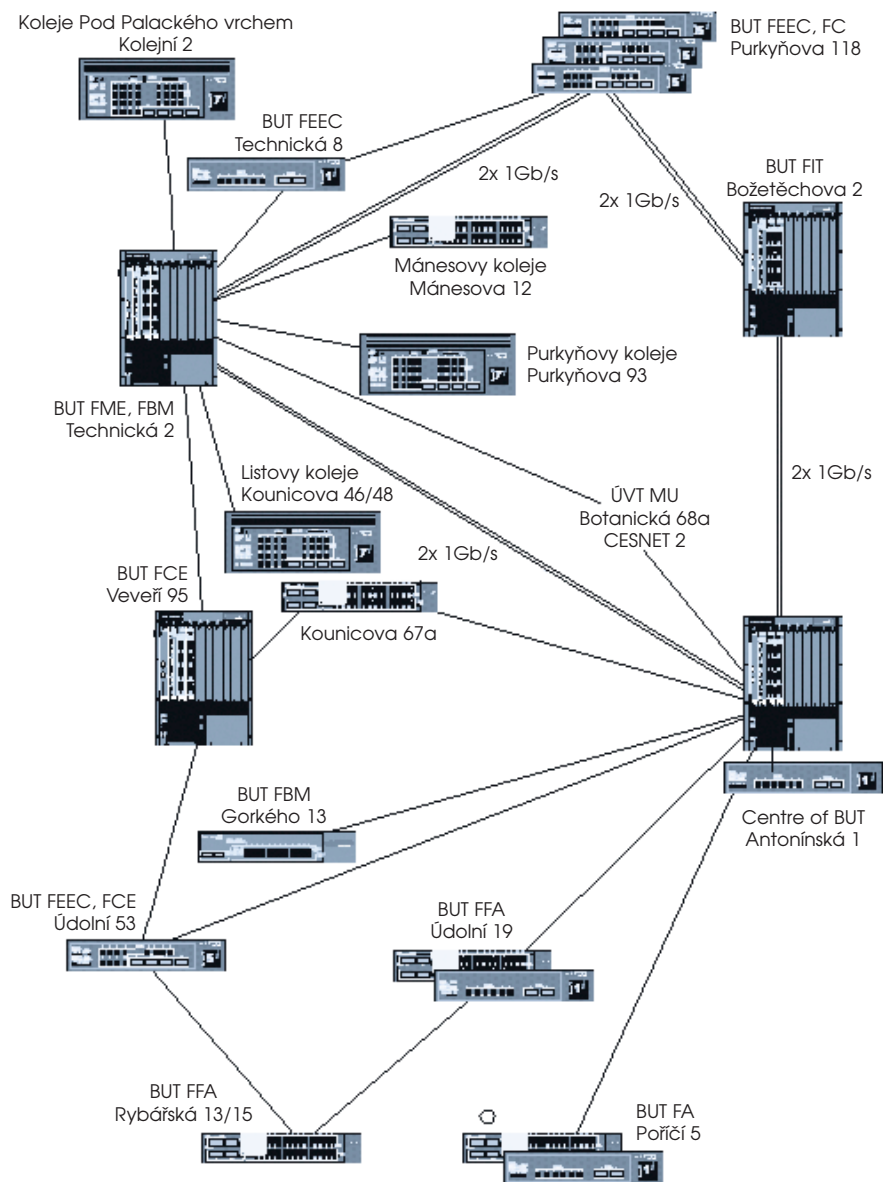
OE – Eureka

OC – Cost

OK – 5th Guideline Programme

LA – Ingo

## VI.-1 BUT GIGABIT BACKBONE NETWORK



**VII.-1 LIBRARY FUNDING AND STAFF**

Library	Faculty	Budget for new holdings	Staff with university education	Staff with secondary school education
Central Library of BUT		7 863	4	5
Purkyňova Campus Library	BUT	102	2	4
Technická Campus Library	FME	1 373	-	4
Library and Information Centre	FCE	510	1	7
Faculty Library	FA	200	-	3
Faculty Library	FBM	550	-	3
Library of the Section of Theories	FFA	30	-	1
Branch Library	FIT	502	-	1
<b>Partial Libraries</b>				
Institute of Biomedical Engineering		307	-	-
Institute of Power Engineering		-	-	-
Inst. of Electr. and Electronic Techn.		31	-	-
Institute of Foreign Languages		14	-	-
Inst. of Mathem. and Inst. of Physics		36	-	-
Institute of Microelectronics		230	-	-
Institute of Radioelectronics		258	-	-
Institute of Telecommunications		407	-	-

**VII.-2 LIBRARY HOLDINGS AND SERVICES**

Library	Faculty	Holdings	Acquisitions	Loans	Registered users	ILS	International ILS
Central Library of BUT	BUT	5789	656	371	2710	627	135
Purkyňova Campus Library	BUT	19020	1625	9639	9639	1156	130
Technická Campus Library	FME	72811	952	12010	1299	523	148
Library and Information Centre	FCE	94586	2235	11532	7947	387	141
Faculty Library	FA	14347	806	3274	568	17	7
Faculty Library	FBM	13682	2501	11673	3141	21	85
Faculty library	FFA	5820	178	2100	340	2	-
Branch Library	FIT	12179	302	280	320	140	-

Library	Faculty	Holdings	Acquisitions	Loans	Registered users	ILS	International ILS
Partial libraries							
Inst. of Biomedical Engineering		3390	186	485	86	-	-
Inst. of Power Engineering		1409	-	-	9	-	-
Inst. of Electr. and Electr. Techn.		2453	41	180	350	4	-
Inst. of Foreign Languages		2326	31	345	51	-	-
Inst. of Mathem. and Inst. of Physics		14603	200	563	51	26	-
Inst. of Microelectronics		3391	273	93	50	5	-
Inst. of Radioelectronics		6639	126	312	298	4	-
Inst. of Telecommunications		5613	390	420	110	67	11

### VII.-3 INFORMATION DATABASES

Library	Faculty	Generated databases	Databases accessed locally/via the Internet
Central Library of BUT	BUT	3	41
Purkyňova Campus Library	BUT	3	21
Technická Campus Library	FME	3	21
Library and Information Centre	FCE	3	58
Faculty Library	FA	3	21
Faculty Library	FBM	3	21
Faculty Library	FFA	3	21
Faculty Library	FIT	3	21

### VII.-4 LIBRARY STUDY ROOMS

Library	Faculty	Study room places	PC places	Average number of visitors
Central Library of BUT	BUT	70	45	215
Purkyňova Campus Library	BUT	80	39	220
Technická Campus Library	FME	130	11	107
Library and Information Centre	FCE	198	28	500
Faculty Library	FA	60	4	70
Faculty Library	FBM	18	4	130
Faculty Library	FFA	12	1	10
Faculty Library	FIT	12	1	10

**VIII.-1 NUMBER OF TITLES IN EDITIONS PUBLISHED BY VUTIUM PRESS IN 2002 (by ISBN)**

Textbooks	Monographs	Lecture notes	Proceedings	Research publications	Journals	Total
1	3	3	2	84	1	94

**VIII.-2 NUMBER OF TITLES PUBLISHED AT BUT IN 2002 (by ISBN)**

Publisher	Textbooks	Monographs	Lecture notes	Proceedings	Research publications	Journals	Total
FCE	1	-	25	9	-	-	35
FME	-	2	16	19	-	-	37
FEEC	-	-	33	8	-	-	41
FA	-	-	-	2	-	-	2
FBM	-	-	15	4	-	-	19
FC	-	-	1	5	-	-	6
FIT	-	-	-	4	-	-	4
RO	-	-	-	3	-	-	3
VUTIUM	1	3	3	2	84	1	94
Total	2	5	93	56	84	1	241

**IX.-1 BUT EMPLOYEE NUMBERS IN 2002**

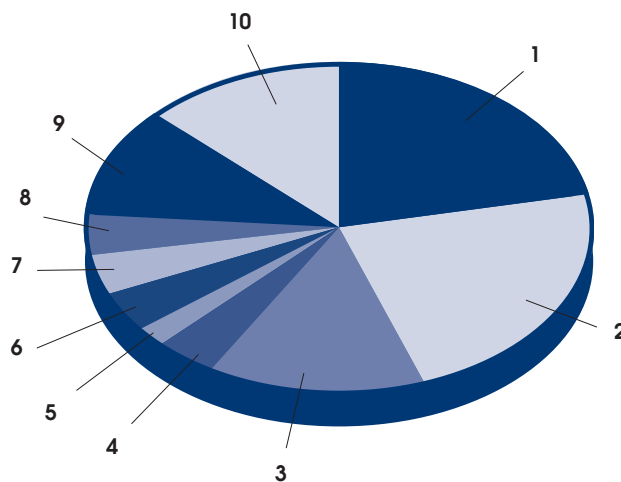
faculty	FCE	FME	FEEC	FA	FFA	FC
Professors	9.291	33.579	23.365	3.748	2.664	7.337
Associate Profess.	55.554	78.911	53.615	13.686	11.163	12.554
Senior Lecturers	159.683	105.003	70.384	26.072	11.082	20.839
Lecturers	56.794	35.957	20.348	9.673	6.791	10.334
Researchers	3.734	8.036	3.663	0.240	-	0.204
Administration Staff	117.751	173.655	100.764	23.475	10.533	34.394
Blue-collar Workers	71.024	49.896	33.310	18.453	7.596	7.196
Business and Operation Staff	-	-	-	-	-	-
total	473.831	485.037	305.449	95.347	49.829	92.858

faculty	FBM	FIT	RO	DaR	BUT DaR	BUT
Professors	3.996	4.573	-	-	88.553	88 553
Associate Professors	15.063	8.742	1.200	-	250.488	250 488
Senior Lecturers	30.098	10.533	12.992	-	446.686	446 686
Lecturers	8.826	1.961	2.847	-	153.531	153 531
Researchers	1.179	-	-	-	17.056	17 056
Administration Staff	32.684	27.379	154.509	65.456	675.144	740 600
Blue-collar Workers	3.994	15.485	90.933	135.365	297.887	433 252
Business and Operation Staff	-	-	-	77.465	-	77 465
Total	95.840	68.673	262.481	278.286	1 929.345	2 207 631

Note: total numbers (all sources) average recalculated numbers

#### IX.-2a STRUCTURE OF EMPLOYEES

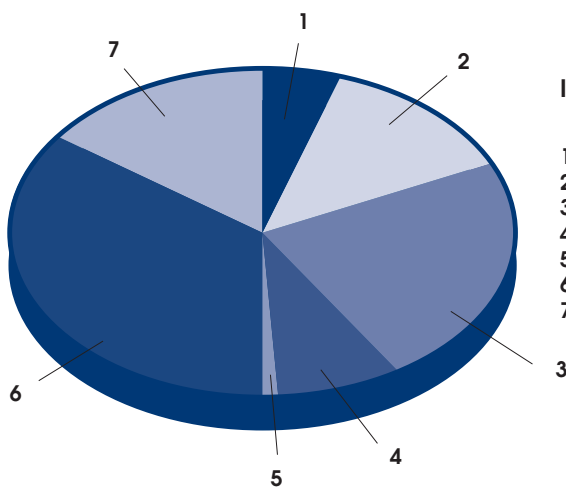
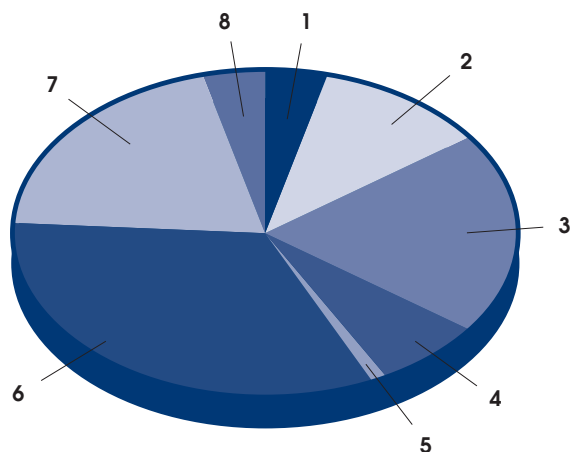
- 1 – FCE 21 %
- 2 – FME 23 %
- 3 – FEEC 14 %
- 4 – FA 4 %
- 5 – FFA 2 %
- 6 – FC 4 %
- 7 – FBM 4 %
- 8 – FIT 3 %
- 9 – RO 12 %
- 10 – DaR 13 %





**IX.-2b EMPLOYEE PROFESSIONAL STRUCTURE**

1 – Professors	4%
2 – Associate Professors	11%
3 – Senior Lecturers	20%
4 – Lecturers	7%
5 – Researchers	1%
6 – Administration Staff	33%
7 – Blue-collar Workers	20%
8 – Business and Operation Staff	4%

**IX.-2c BUT EMPLOYEE PROFESSIONAL STRUCTURE without DaR**

1 – Professors	5%
2 – Associate Professors	13%
3 – Senior Lecturers	23%
4 – Lecturers	8%
5 – Researchers	1%
6 – Administration Staff	35%
7 – Blue-collar Workers	15%

**IX.-3 BUT ACADEMIC STAFF AGE (in December 2002)**

Age group	Teachers					Researchers
	Professors	Associate Prof.	Senior Lectur.	Lecturers	Junior lecturers	
less than 30	-	-	19.6	74.9	-	2
30–39	-	7	75.8	65	-	3
40–49	10.5	61.1	135.7	9.6	-	4.8
50–59	24.1	102.6	156.7	2	-	1.6
60–69	44.9	68.4	66.1	-	-	6.4
over 70	6.7	4.9	0.6	-	-	0.2

**IX.-4 NUMBERS OF EXTERNAL AND INTERNAL UNIVERSITY TEACHERS**

(persons and recalculated numbers for all activities)

Employees	Teachers					Researchers
	Professors	Associate Prof.	Senior Lecturers	Lecturers	Junior lecturers	
internal						
persons	103	267	491	154	-	20
recalculated	88.5	250.5	446.7	153.5	-	17
external						
persons	153	165	473	259	59	1
recalculated	3.37	5.44	3.37	10.22	2.7	0.4

The required data on external teachers are not complete. The contracts began to be categorised in 2002 and it can be estimated that another 150 external teachers (18 is the recalculated number) were teaching.

**X.-1 INTERNATIONAL UNIVERSITY DIRECT CO-OPERATION AGREEMENTS**

Agreements signed in 2002	Agreements in preparation
Minsk Polytechnic Institute, Belarus	Insa Lyon, France
Izhevsk State Technical University, Russia	Kiev Polytechnic Institute, Ukraine
Dominican University Chicago, USA	Taras Shevchenko National University, Ukraine
Technical University of Zvolen, Slovakia	Warsaw Polytechnic, Poland
ESIEE Amiens, France	Technical University of Opole, Poland
ESIEE Paris, France	Moscow Energetic Institute, Russia
Technical University of Grenoble, France	East Ukrainian National University in Lugansk
Fachhochschule Wiesbaden, Germany	Technical University of Leipzig
Fachhochschule Darmstadt, Germany	Technical University of Dresden
Fachhochschule Pforzheim, Germany	
Nottingham Trent University, UK	
Molde University College, Norway	

**X.-2 SOCRATES/ERASMUS – comparison of activities in academic years**

Activity	1998/1999	1999/2000	2000/2001	2001/2002	2002/2003 (plan)
<b>Student mobility</b>					
Number of students	56	70	110	121	195
Number of months	255	311	577	700	1024
<b>Teacher mobility</b>					
Number of teachers	21	32	43	60	127
Number of weeks	27	33	7	106	195
<b>Intensive programme (IP)</b>					
BUT – coordinator	-	-	-	1	-
BUT – partner	-	-	-	2	2
European modules (EU)	-	-	-	1	-

**X.-3 STAYS ABROAD WITHIN SOCRATES/ERASMUS PROGRAMMES IN THE ACADEMIC YEARS  
2000/2001 AND 2001/2002**

Faculty	teachers (persons) 2000/2001	teachers (weeks) 2000/2001	teachers (persons) 2001/2002	teachers (weeks) 2001/2002	students (persons) 2000/2001	students (weeks) 2000/2001	students (persons) 2001/2002	students (weeks) 2001/2002
FCE	4	6	7	10	13	75	15	90
FME	6	11	18	41	19	94.5	23	136
FEEC	16	25	-	-	34	180	-	-
FEEC	-	-	11	16	-	-	19	104
FA	8	11	8	11	14	102.5	15	109
FBM	6	13	4	7	14	75	23	135
FC	-	-	-	-	1	4	2	6
FFA	3	5	5	13	15	46	16	51
FIT	-	-	7	8	-	-	8	69
BUT	43	71	60	106	110	577	121	700

**X.-4 PREPARATORY AND MONITORING TRIPS IN 2002**

Trip	Faculty	University visited
preparatory	FEEC	ESIEE Amiens
monitoring	FEEC	ESIEE Paris, UJF Grenoble, INSA Lyon
monitoring	FEEC	FH Wiesbaden
preparatory	FEEC	FH Darmstadt
preparatory	FBM	EFP Paris
monitoring	FCE	National Technical University of Athens

**XII.-1 USE OF BED CAPACITY IN BUT DORMITORIES IN 2002**

Dormitory	beds	students	students in excess	insulated rooms	others
Kolejní 2	3 296	3 130 (3 148*)	560	4	144
Purkyňova 93	2 268	2 248	-	12	8
Kounicova 46/48	1 042	1 030	-	-	12
Mánesova 12	264	261	-	3	-
total	6 870	6 687	560	19	164

Pozn.: (\*) Note that, since September 2002, the number of student beds has been increased by 18 thanks to the new rooms built at Kolejní 2.

The „others” column lists beds that are available for accommodation of guest, foreign lecturers and BUT employees.

**XII.-2 TRENDS OF STUDENT ACCOMMODATION**

Numbers, rates	1998	1999	2000	2001	2002	average
BUT students	14 777	15 981	14 242	15 090	15 740	15 166
accommodation applicants	8 187	8 453	7 926	8 701	8 690	8 391
dormitory beds	6 844	6 601	6 644	6 669	6 697	6 691
non-accommod. at beginning of year	1 050	1 526	1 177	1 675	1 342	1 354
students/bed	2.16	2.42	2.14	2.26	2.35	2.27
applicants/bed	1.20	1.28	1.19	1.30	1.30	1.25
applicants/students percentage	55.40	52.89	55.65	57.66	55.21	55.33
beds/total students percentage	46.32	41.31	46.65	44.19	42.55	44.12
free beds for preliminary accommod.	2 717	2 896	2 601	2 726	3 014	2 791
Pod Palackého vrchem dormitory	1 560	1 580	1 164	1 121	1 200	1 325
Purkyňova dormitory	840	964	1 086	1 291	1 380	1 112
Kounicova dormitory	317	352	351	314	434	354

**XII.-3 NUMBER OF MEALS SOLD IN 2002**

Centre	Student 2002	BUT employees except DaR 2002	DaR employees 2002
Kounicova	510 474	16 374	6 543
Purkyňova	582 737	70 048	8 078
Kolejní	314 437	13 594	3 037
total	1 407 648	100 016	17 658

Centre	Foreign persons 2002	total 2002
Kounicova	5 838	539 229
Purkyňova	78 989	739 852
Kolejní	7 548	338 616
total	92 375	1 617 697

**XII.-4 STUDENT CARE – accommodation, meals**

Total number of dormitory beds	6 870		
Dormitory beds for students	6 687		
Dormitory beds for staff	62		
Dormitory beds for university guests	102		
Number of beds in hired facilities	200		
Number of applications for accommod. in the academic year	8 182		
Number of granted applications on 31 <sup>st</sup> October	6 627		
Accommodation price per month	BUT Students	BUT Staff	Others
A – cell system	1 035 – 1 255.-	1090.-	from 190.- per day
B – multiple-bed rooms *	670 – 840.-	-	from 190.- per day
C – others	-	-	-
Price of meal and dinner in CZK	16.50 – 23.-	16.50 – 23.-	39 – 45.90
Total number of lunches and dinners in the academic year	1 407 657	117 222	92 818

\* rooms with common baths and toilets in the corridor

**XII.-5 BUT DORMITORIES WITH NUMBERS OF BEDS**

Dormitory	number of beds
Kolejní 2	3 296
Purkyňova 93	2 268
Kounicova 46/48	1 042
Mánesova 12	264
total	6 870

**XII.-6 BUT REFECTORIES WITH MAXIMUM DAILY PRODUCTION CAPACITY**

Refectory	Operation type	Production capacity
Kolejní 2	cooking and selling meals	2 000
Purkyňova 93	cooking and selling meals	6 000
Kounicova 46/48	cooking and selling meals	2 200
Technická 2	cooking and selling meals	700
Technická 8	cooking and selling meals	600
Veveří 95	cooking and selling meals	900
Technická 2 – staff dining room	selling meals	100
Antonínská 1	selling meals	-
total		12 500

**XIII.-1 BALANCE SHEET**

in thousands of CZK		2002	2001
Total assets		3 059 890	2 762 389
A	Stock Subscriptions Receivable	-	-
B	Fixed Assets	2 725 188	2 402 098
B. I.	Intangible Assets	26 125	14 988
B. I.	Property Plant & Equipment	2 699 012	2 387 059
B. III.	Investments	51	51
B. III. I.	Securities and deposits	51	51
C	Current Assets	334 702	342 163
C. I.	Inventory	7 521	8 541
C. II.	Long-Term Receivables	8 083	14 076
C. III.	Current Receivables	41 462	16 928
C. IV.	Financial Assets	252 483	302 618
D	Other Assets	25 153	18 128

**XIII.-2 BALANCE SHEET**

in thousands of CZK		2002	2001
Total Liabilities and Equity		3 059 890	2 762 389
A	Equity	2 843 452	2 592 884
A. I.	Legal Capital	2 746 197	2 423 709
A. II.	Other Equity Accounts	87 701	164 554
A. III.	Appropriated Retained Earnings	-	-
+A. IV.	Retained Earnings	-	-
+A. V.	Net Income for Fiscal Period	9 554	4 621
B	Liabilities	216 437	127 734
B. I.	Allowances	3 427	1 713
B. II.	Long-Term Liabilities	-	-
B. III.	Current Liabilities	166 802	126 021
B. IV.	Bank Loans and Other Credit	942	-
B. IV. I.	Long-Term Bank Loans	-	-
C	Other Liabilities	45 266	41 771

**XIII.-3 PROFIT AND LOSS STATEMENT**

in thousands of CZK		2002	2001
I. - II.	Merchandise Revenue	212 100	206 621
I. - II. 1.	including Product Revenue	197	291
II. 2.	- Service Revenue	211 903	206 330
II. 3.	Revenuisation	8 030	3 808
A + B	Raw Material and Energy Used	264 262	233 857
C	Service Costs	184 728	148 022
D	Wages and Salaries	721 781	637 998
E	Amortization of Intangibles and Depreciation of PP&E	178 821	170 623
IV. + V.	Clearing of Allowances, Adjustments and Accrued Revenue to Operating Revenue	807	22 719
G + H	Creation of Allowances, Adjustments and Accrued Revenue to Operating Revenue	3 419	2 640
	Operating subsidies	1 306 290	1 078 345
III. + VI. + VII.	Miscellaneous Operating Revenue	204 711	183 386
D + F + I + J	Miscellaneous Operating Expenses	369 357	297 109
***	Net Income for Fiscal Period	9 554	4 621



Revenue	1 731 937	1 494 879
Expenses	1 722 368	1 490 249
Net Income	9 570	4 630
Special Income Tax Rate	16	9
Net Income After Taxes	9 554	4 621

**XIII.-4**

Subsidy item (in thousands of CZK)	Allocated	Used	Returned
Basic Subsidy (including Spořitelna)	879 341	878 990	351
Education	697 074	697 074	-
Doctoral student scholarships	45 864	45 864	-
Foreigners and international co-operation	13 062	12 775	287
Investment-related expenses	54 637	54 634	3
Educational projects and programmes	3 910	3 910	-
University Development Fund projects	17 325	17 264	61
Emergency removal	-	-	-
Others	47 469	47 469	-
Student accommodation and meals	83 106	83 100	6
Research and development	224 287	224 179	108
Non-specified R&D institutional means	91 030	91 030	-
Research designs	94 792	94 792	-
Research Centres	26 184	26 184	-
Other specific means	12 281	12 173	108
<b>Total ME subsidies</b>	<b>1 186 734</b>	<b>1 186 268</b>	<b>466</b>
CGA	53 033	52 997	6
Other ministries	44 439	44 439	-
Communities, state funds	430	430	-
Other subsidies	-	-	-
Subsidies from abroad	22 156	22 156	-
<b>Total subsidies</b>	<b>1 306 762</b>	<b>1 306 290</b>	<b>472</b>

**XIII.-5**

Funds	1 <sup>st</sup> January 2002	31 <sup>st</sup> December 2002	Difference
Bonus fund	2 199.47	2 974.41	774.94
Reserve fund	13 912.17	13 912.17	-
Fixed Asset Reproduction Fund	145 489.95	66 341.77	-79 148.18
Scholarship Fund	2 952.21	4 472.96	1 520.75

**XIV.-1 STUDIES, EXPERT'S OPINIONS, LITERATURE SEARCHES SUPPLIED**

	amount in thousands of CZK
total	561

**XIV.-2 REPAIRS AND OTHER BUILDING ACTIVITIES FUNDED FROM NON-INVESTMENT BUT FUNDS**

Integrated building of FBM and FEEC	2 827
Extending dining room Q in building A1	868
Incubator of new technologies at PPV	2
Covering of gym at Purkyňova 93	348
Reconstruction of FEEC campus at Božetěchova	2 957
Reconstruction of the southern enclosure no. 2 at Božetěchova	96
Reconstruction of the southern enclosures no. 3 and 3 at Božetěchova	4 644
Reconstruction and repair of building 506 at Purkyňova 118	58
Reconstruction and repair of building A at Veveří 95	350
Reconstruction and repair of building E1 at Rybkova 2a	1 123
Rec. and repair of a facade with replacement of windows at Žižkova 17	31
Repair of enclosure wall and planting shrubbery at Antonínská 1	1 618
Planting replacement shrubbery	39
Reconstruction and repair of the 1 <sup>st</sup> floor of the building at Údolní 19	376
Reconstruction and repair of the Ramzová holiday resort	1 316
Exchanger station in building A5 at PPV	877
Outside staircase of building A1 at PPV	1 537

Repair of roof of building F2 at PPV	260
Repair of staircase in building U1 at Údolní 53	417
Repair of roofs of buildings U3, U15 at Údolní 53	1 001
Repair of basement of building D1 at Veveří 95	2 001
Replacement of windows of building B at Poříčí 5	2 941
Replacement of windows of building D at Veveří 95	97
Repair of building A at Poříčí 5	574
Repair of roofs at Rybářská 13/15	756
Passport	107
Update of BUT master plan	480
Study of the PPV sports ground	53
Repairs of the great hall and offices at Kounicova 67a	1 129
Reconstruction and repair of the south facade at Božetěchova	22
Reconstr. and repair of lecture rooms and transformation of a gym into teaching rooms	188
Primary equipment	1 166
Repair of building A at Poříčí - change of construction	2
Integrated building of FBM and FEEC - preliminary work	94
Total	30 355

#### XIV.-3 IMPLEMENTATION OF DECISIONS TO MOVE FACULTIES, INSITUTES AND DEPARTMENTS

	amount in thousands of CZK
total	1 539

**XIV.-4 EMERGENCY REPAIRS FUNDED FROM BUT NON-INVESTMENT FUNDS**

	amount in thousands of CZK
Repair of CESA water main	11
Reconstruction and repair of a transformer	80
Repairs of a building at Údolní 19 (plumbing, floors, wall repairs)	133
Replacement of flooring at Poříčí 5	155
Poříčí - painting and joinery tiling	221
Cleaning sprayed dormitory walls	84
Removal of radiators	14
Repair of floors	36
Assessment for taking over the RAO unit	193
<b>Total</b>	<b>927</b>

**XIV.-5 NON-INVESTMENT SUBSIDIES FOR FUNDING NON-INVESTMENT PROJECTS  
- PART OF THE PROPERTY REPRODUCTION PROGRAMME**

	amount in thousands of CZK
Reconstr. and repair of a facade and replacement of windows at Žižkova 17	4 740
Reconstruction and repair of building E1 at Rybkova 2a	10 990
Reconstruction and repair of building A at Veveří 95	9 701
Repair of building A at Poříčí 5	20 000
Repair of roofs at Rybářská 13/15	1 794
Repair of sanitary facilities of blocks K1, K3, and K4 of PPV dormitories	6 800
Reconstruction of the southern enclosure no. 2 at Božetěchova	1 100

**XIV.-6 DaR PROJECTS**

	amount in thousands of CZK
Repair of sanitary facilities of blocks K1, K3, and K4 of PPV dormitories	138
Extending the accommodation capacity of Block K1 of PPV dormitories	62
Kounicova refectory - reconstruction and repair of floors and facilities	177
<b>Total</b>	<b>377</b>

**XIV.-7a SPENDING INVESTMENT FUNDS ON BUT CONSTRUCTIONS IN 2002**

BUT project	Ministry of Edu.	BUT	total
Integrated building of FBM and FCCE on PPV campus	42 283	61 263	103 546
Purchase of land	-	2 574	2 574
Reconstruction of air-conditioning in lecture rooms P1-P6 in building A1 at PPV	5 000	1 117	6 717
Extension of dining room Q in building A1 at PPV		4 183	4 183
Reconstruction of lift at FME Technická		2 016	2 016
Incubator of new technologies on PPV campus	5 000	1 334	6 334
Covering of gym at Purkyňova 93		816	816
Reconstruction of FEEC campus at Božetěchova		25 416	25 416
Rec. of the southern enclosure no. 2 at Božetěchova		4 621	4 621
Rec. of the south. enclos. no. 3 and 3 at Božetěchova		11 130	11 130
Rec. and repair of building 506 at Purkyňova 118		2 731	2 731
Reconstruction and repair of building A at Veveří 95	56 198	4 552	60 750
Rec. and repair of building E1 at Rybkova 2a	21 000	10 946	31 946
Connecting bridge between D1 and D2 at Veveří 95		4 239	4 239
Reconstruction and repair of the facade and replacement of windows at Žižkova 17	6 671	82	6 753
Repair of enclosure wall and planting shrubbery at Antonínská 1		487	487
Reconstruction and repair of the first floor at Údolní 19		4 989	4 989
Structure cabling at Údolní 19		526	526
Computer and information networks		3 589	3 589
Rec. and repair of the Ramzová holiday resort		5 054	5 054
Exchanger station in building A5 at PPV		2 664	2 664
Repair of basement in building D1 at Veveří 95		952	952
Reconstruction of entrance at Technická 8		819	819
Repair of building A at Poříčí 5		8 547	8 547
Repair of sanitary facilities of blocks K1, K3, and K4 of PPV dormitories		758	758
Repair of roofs at Rybářská 13/15		61	61
FEEC power centre		203	203

BUT project	Ministry of Edu.	BUT	total
Repair of the great hall and offices at Kounicova 67a		1 540	1 540
Rec. and repair of the south facade at Božetěchova		56	56
Wall of the porter's lodge at Antonínská 1		49	49
Moving of an FCE laboratory		1 240	1 240
Reconstruction and repair of lecture rooms and transformation of a gym into teaching rooms at Božetěchova		1 127	1 127
Adapting studios to teaching rooms on 4th floor at Poříčí 5		32	32
Primary equipment		1 230	1 230
Electric security and fire alarm system at Poříčí 5		1 549	1 549
Repair of building A at Poříčí - change of construction		4 530	4 530
Integrated building of FBM and FECC - preparation work		1 906	1 906
Total construction cost		179 528	179 528

#### XIV.-7b SPENDING FUNDS ON DaR CONSTRUCTIONS

DaR constructions (investment funding)	Ministry of edu.	BUT	Total
Reconstruction and wiring of the Purkyňova dormitories	-	14 560	14 560
Repair of sanitary facilities of blocks K1, K3, and K4 of PPV dormitories	-	10	10
Extending the accommodation capacity of Block K1 of PPV dormitories	-	897	897
PC network at PPV dormitories - block K2 and K4 – extended accommodation capacity	-	115	115
PC network at PPV dormitories - block K3	-	717	717
PC network at Mánesovy dormitories	-	285	285
Kounicova refectory rec. and repair of floors and facilities	-	3 872	3 872
Reconstruction of dining room at Veveří	-	746	746
Rec.n of the transformer station at Listovy dormitories	-	367	367
Total DaR construction projects	-	21 569	21 569

**XIV.-7c OVERVIEW OF SPENDING ON BUT CONSTRUCTIONS**

Projects	Ministry of edu.	BUT	Total
Total BUT projects	136 151	201 097	337 248

**XIV.-8 SPENDING INVESTMENT FUNDS ON PURCHASE OF MACHINES AND EQUIPMENT NOT INCLUDED IN COSTS**

Unit	Fixed assets development fund	Subsidy	Grants	Subsidies from abroad	Total
FCE	7 603	3 279	4 475	924	16 281
FME	13 848	3 671	39 414	-	56 933
FEEC	7 952	1 788	15 827	-	25 567
FA	878	597	4 348	-	5 823
FBM	2 224		619	134	753
FC	4 652	963	4 805	-	10 420
FFA	677	400	1 291	-	2 368
FIT	3 460	567	1 148	-	5 175
RO	2 571	15 658	2 152	290	20 671
DaR	4 963	-	-	-	4 963
University	3 393	-	-	-	3 393

**XIV.-9 ACCOUNTING BALANCES OF THE FIXED ASSETS REPRODUCTION FUND**on 31<sup>st</sup> December 2002

Unit	in thousands of CZK
Faculties	12 226
Rector's Office	1 945
University Centre	51 351
DaR	821

**XVI.-1 REGISTRATION AND REGISTRATION CHANGES OF IN-HOUSE RULES**

Rule	Approved by BUT AS	In force from
Changes in election rules and rules of proceedings of the BUT Academic Senate (Amendment 1)	27/11/2001	1/1/2002
Rules for establishing legal entities and for monetary and non-monetary investments in such legal entities by BUT	1/10/2002	21/10/2002



Edited by Centrum in Brno in 2003.  
Editor PhDr. Jiřka Vanýsková.  
Design and DTP by dagmarah@email.cz.  
DTP and printed by Expodata-Didot.  
In an edition of 450 copies.

ISBN 80-214-2419-2



9 788021 424197