



INTERNATIONAL STUDENT GUIDE





WELCOME TO BRNO UNIVERSITY OF TECHNOLOGY, CZECH REPUBLIC

It is our pleasure that you have chosen Brno University of Technology (BUT) as your study abroad destination. It is the oldest and largest engineering university in the Czech Republic and one of the leading teaching and research universities in Central Europe. We believe that studying at BUT and living in the vibrant, university city of Brno will bring you an unforgettable life experience. Brno is a significant academic city with six public and a number of private universities. There are about 85 thousand university students and the city is changing to meet this challenge.

As settling in a foreign environment might be challenging, this booklet aims to help you gain basic information about living in the Czech Republic and being a student here. Together with the faculty international co-ordinators, we are ready to give you guidance and support so that you can fully enjoy both the academic as well as cultural part of your stay at Brno University of Technology.

**The team of International Relations Department
Rectorate of Brno University of Technology**



BRNO UNIVERSITY OF TECHNOLOGY WORLD RANKINGS

According to QS World University Ranking, is BUT among top #601–650 universities in the worlds and #19 in Emerging Europe and Central Asia. THE World University Ranking places BUT between #601–800 top universities worldwide. The U.S. News Best Global Universities also recognized BUT academic research and reputation in its recent rankings.

The City of Brno

Based on QS Survey from students and recent graduates, Brno is the 59th in the world. Brno is considerably less well-known than Prague, but it is almost on a par with the capital in delivering a great students' experience.

The city gets extremely strong ratings for tolerance and inclusivity, and an ease of getting around, while also scoring very well for both affordability and nightlife. Respondents praised the attractiveness of the city, as well as a large and friendly student community.



WHAT TO DO BEFORE ARRIVAL

1) Admission procedure

Students need to fill in the on-line application form:
www.vutbr.cz/eprihlaska/en

2) Visa – students from outside the EU/EFTA countries

Obtaining a visa is the most important thing when preparing for your stay if you do not come from an EU/EFTA country. To be able to apply for the visa, you will need supporting documents, some of which will be sent to you by BUT. The application procedure and visa requirements are defined by the regulations of the Czech embassy in your home country.



3) Arrival information

Transportation

Before arrival BUT informs students about how to get to Brno by bus or train from the airports (p. 6).

Insurance

BUT provides information on the insurance requirements. For more details, see the section Practicalities (p. 8).

Accommodation

International students are offered accommodation at BUT student halls of residence. More information can be found at www.kam.vutbr.cz/english

Courses

Before arrival BUT informs students about courses opened in the respective semester. The appropriate faculty sends students course registration guidelines one month before arrival.

The International Relations Department and the international offices at faculties are prepared to provide students with support before and after their arrival.



HOW TO GET TO BRNO

Historically significant, Brno is the second largest city of the Czech Republic. It is the capital of the South Moravian Region, located in Central Europe and easily accessible.

By airplane

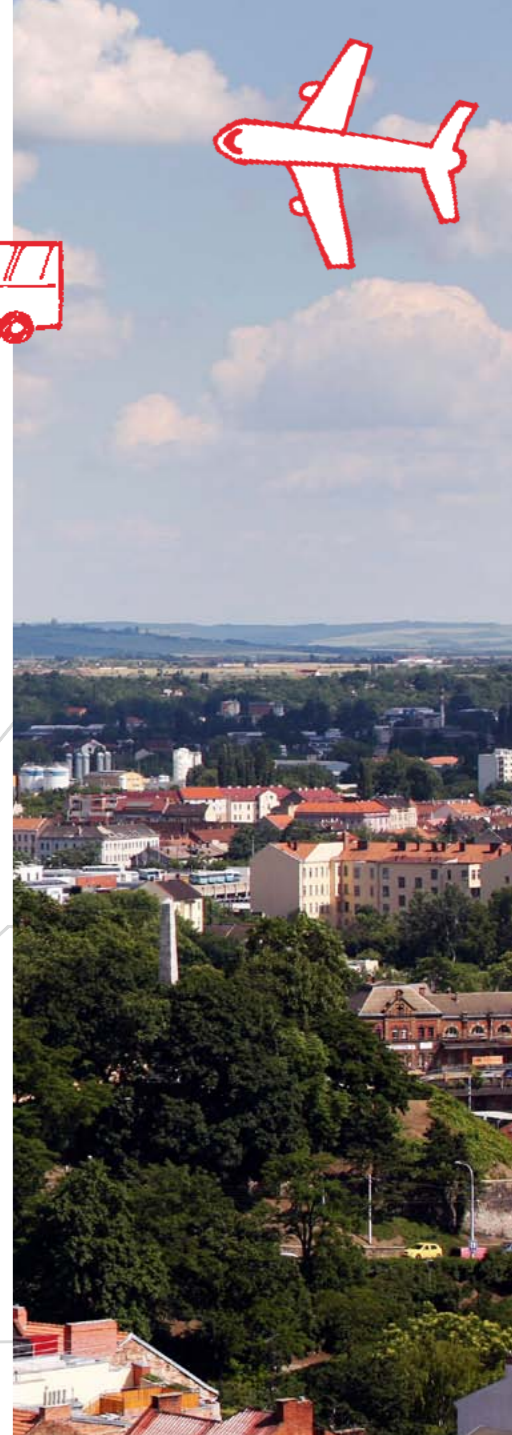
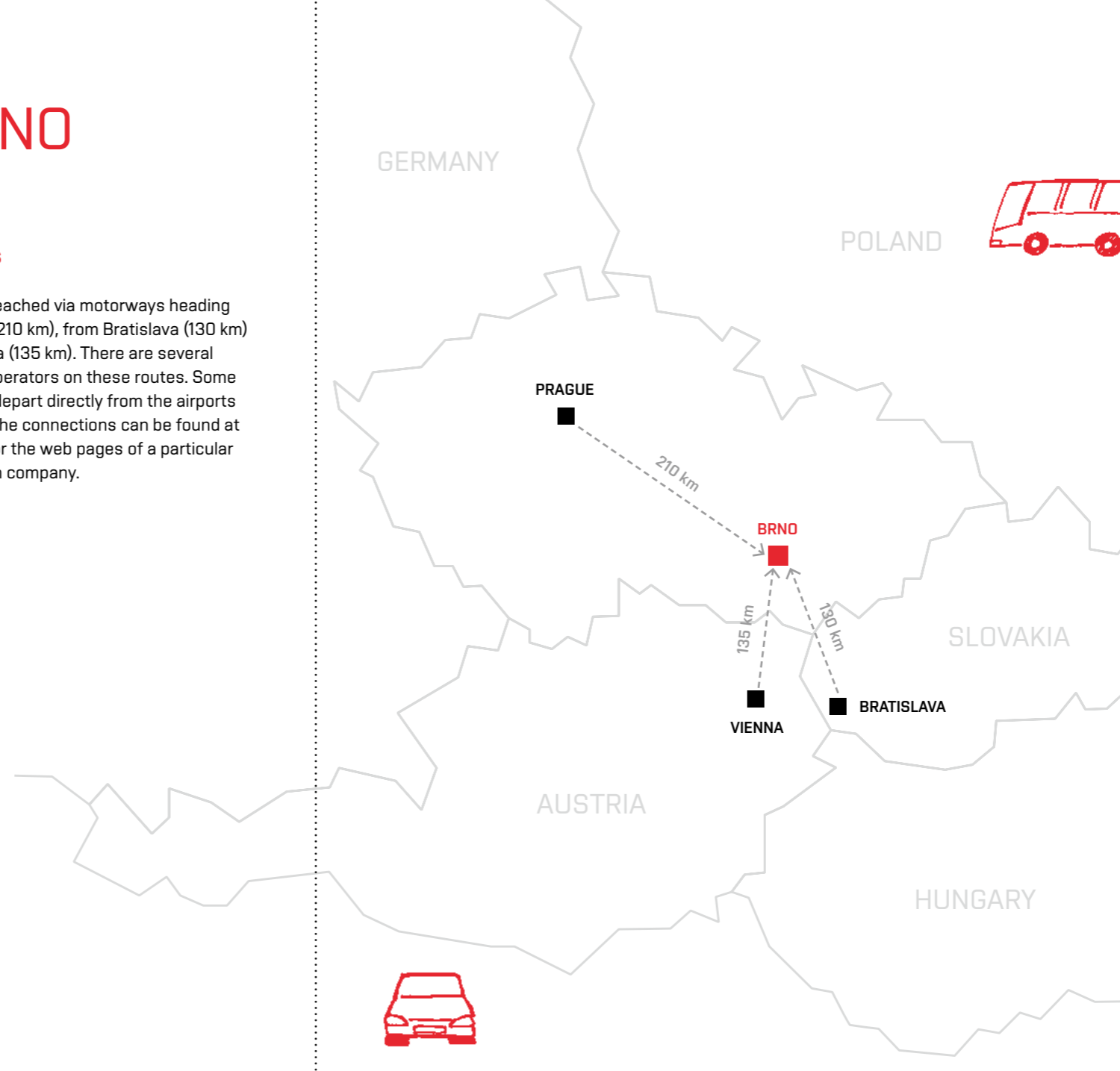
Flights are possible to Brno International Airport regularly from London, Moscow, Munich or Eindhoven. Other possible connections are via Vaclav Havel Airport in Prague, Wien-Schwechat Airport in Vienna or Bratislava Airport. Buses heading downtown to train and bus stations are available at the airport terminals.

By train

Brno is an important rail junction of several major train routes connecting Eastern and Western Europe and many EuroCity trains pass through. The train connections can be found at www.idos.cz.

By car/bus

Brno can be reached via motorways heading from Prague (210 km), from Bratislava (130 km) or from Vienna (135 km). There are several bus service operators on these routes. Some of the buses depart directly from the airports (see above). The connections can be found at www.idos.cz or the web pages of a particular transportation company.



PRACTICALITIES

Insurance

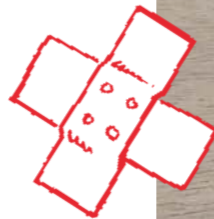
Before coming to study in the Czech Republic, students should acquire their health and travel insurance. It is also recommended to have insurance that is valid outside of the Czech Republic for travelling purposes.

Students from the EU/EFTA countries are entitled to the same urgent health care free of charge as are Czech citizens. For this purpose, it is necessary to have the European Health Insurance Card issued by the social security or health care authorities in student's home country. However, this card does not cover any additional expenses such as medical transport or repatriation, nor can it be used as a travel insurance card.

Students from outside the EU/EFTA countries must get private insurance that is valid for the whole period of their stay in the Czech Republic and covers hospitalisation, medical assistance and repatriation expenses. For stays longer than 90 days, it is recommended to make sure that the insurance meets visa application requirements.

For more information visit the websites of the Czech embassies and consulates or the Czech Insurance Association:

www.mzv.cz/jnp/en/diplomatic_missions
www.studyin.cz/medical-care



Transport in Brno

There is an excellent public transport system in Brno with bus, tram and trolleybus lines including night bus lines. Students are entitled to a reduced transport fare based on the confirmation of study issued by Brno Public Transport Company and confirmed by the study department at the faculty.

The time tables can be found at each stop and on-line at:
www.jizdnirady.idnes.cz/brno/spojeni

Maps

To find your way you can use the web map service www.mapy.cz. For hiking and cycling enthusiasts there is a trip advisor at www.visitgreenways.com.





Currency and Cost of Living

The Czech crown (in Czech "koruna"), abbreviated as Kč (CZK) is the official currency of the Czech Republic. The crown is formally divided into hellers (haléř), which are no longer in use. They are shown in prices and rounded off to the nearest crown. The approximate conversion rate is 100 CZK / 3,70 EUR or 27 CZK / 1 EUR.

Used coins are 1 Kč, 2 Kč, 5 Kč, 20 Kč and 50 Kč; used banknotes are 100 Kč, 200 Kč, 500 Kč, 1 000 Kč, 2 000 Kč and 5 000 Kč.

Although the Euro is occasionally accepted by some restaurants, hotels and shops, the Czech crown is generally the only currency that can be used.

Most supermarkets, shops, restaurants and institutions accept payment cards. There are many cash machines located especially in the city centre and in the campus.

Approximate prices

Student halls (month)	3 400 Kč / 120 EUR
Private room in a flat (month)	from 5 400 Kč / 200 EUR
Public transport in Brno (1 month) (3 months)	275 Kč / 10 EUR (student fare) 685 Kč / 25 EUR (student fare)
Lunch at university canteen	from 55 Kč / 2 EUR
Dinner at a restaurant	from 130 Kč / 5 EUR
Pizza at a restaurant	from 130 Kč / 5 EUR
Beer at a pub	from 30 Kč / 1.10 EUR
Loaf of bread	30 Kč / 1.10 EUR
1 l of milk	20 Kč / 0.70 EUR
Yoghurt	14 Kč / 0.50 EUR
1 kg of potatoes	20 Kč / 0.70 EUR
1 kg of apples	27 Kč / 1 EUR
Cinema ticket	from 100 Kč / 3.70 EUR
Swimming pool (hour)	80 Kč / 3 EUR
Postage stamp for letters and postcards abroad	32 Kč / 1.20 EUR Europe 37 Kč / 1.40 EUR outside Europe

The ISIC card allows the holders to discounts for admissions, transport, products and fees at many institutions.



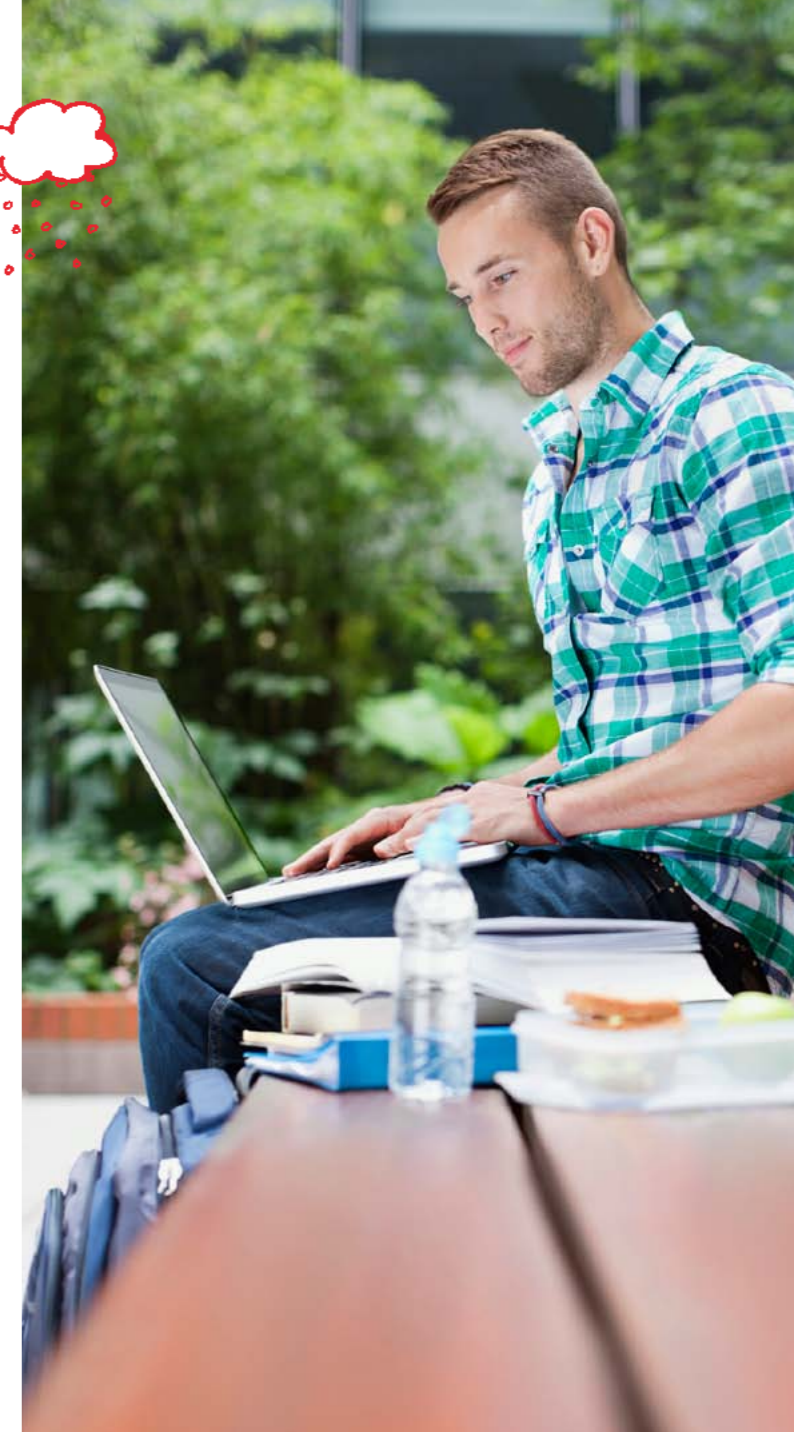
Climate and weather

The Czech Republic is a landlocked country with a mild climate. There are four seasons including relatively hot summers (approx. 24 °C), cold and snowy winters (around -4 °C) and moderate springs and autumns with prevailing rains. The temperatures vary according to the region, with Brno and the South Moravian Region being the warmest part of the country.

For weather forecast you can visit www.chmi.cz.

Emergency phone numbers

General emergency	112
Ambulance	155
Fire station	150
Police	158
Municipal police	156





HALLS OF RESIDENCE, DINING SERVICES AND SPORTS

Accommodation

BUT provides accommodation in modern halls of residence, with high speed internet connection. Most of the bedrooms are equipped with their own bathroom and toilet; some rooms have a shared bathroom for 2–3 rooms. Most of the rooms are double rooms, a small number are single rooms. Students have access to a study room, TV room, bicycle room, music room with a piano and a photographic room, for example. All halls are equipped with laundry rooms with clothes dryers. The premises offer various sports facilities like multipurpose fields, quality body building gyms, gymnasiums, pool tables, table tennis equipment.

Dining

The dining services include: cafeterias, restaurants, pizzerias, cafés, bars and snack bars. There is a broad choice of menus in the form of hot and cold, made-to-order, special diet, and vegetarian meals in the cafeterias and restaurants. Pleasant cafés and bars are ideal for relaxing and meeting friends. There is a computerized food services system for on-line ordering and cash free payment with your student cards.

Student Accommodation Office

T +420 541 142 930–3

E ubytovatelky@skm.vutbr.cz

www.kam.vutbr.cz/english





SPORTS

Brno University of Technology has its own sport centre which offers a wide range of activities for students, such as aerobics, badminton, bowling, indoor cycling, swimming, horse-back riding or squash. For BUT students most of the activities are free of charge:

www.cesa.vutbr.cz/about-cesa

In addition there are a lot of sporting facilities in Brno including three indoor swimming pools, four open-air swimming pools and a small aqua park. In winter time you can go ice-skating.

www.brnoexpatcentre.eu/services/sports



For dance enthusiasts there are several dance centres which offer a wide range of classes, such as ballet, ballroom dancing, street dance, Zumba, Latin, pole dance and others. There are also sport centres with tennis, squash and badminton courts and many gyms with specific classes.

If you like watching sports, you should definitely go and see the famous ice-hockey match between the traditional rivals BUT and Masaryk University, which takes place every winter semester in Rondo Arena.



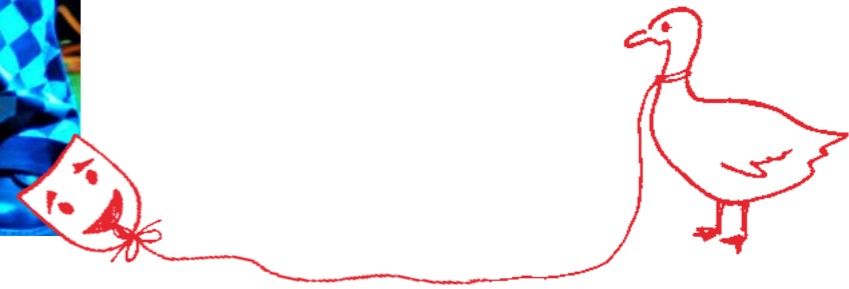
CULTURE

In regards to films, Brno has two multiplexes and a variety of other cinemas with special prices for students. For film fans, there are cinemas Kino Art and Kino Scala, which offer an abundant selection of less main-stream films and film classics, as well as films from unusual countries.

The theatres in Brno offer a wide range of stage productions – dramas, operas, ballets, operettas, musicals and puppet plays. The main theatres are: Janáček Theatre, Mahen Theatre, Brno Municipal Theatre and Theatre Husa na provázku (Goose on a String).

Brno never sleeps! There are so many clubs that you will have no idea where to go first. Doesn't matter what kind of music you like – all the clubs have something special and you are sure to find one to suit your taste. Checking an entertainment guide, such as www.GoToBrno.cz will give you the latest information. There are many festivals and events held in the city regularly every year. A lot of information can be provided by the Tourist Information Centre: www.ticbrno.cz/en in the Old Town Hall. They offer maps of Brno and its surroundings, brochures and a list of upcoming events.

The nicest thing about the city centre is that there is always something going on in the main square called Náměstí Svobody ("Svobodák"): a festival of Czech regions, where you can try our traditional cuisine, wine festivals, the Easter market or the popular Christmas Market.



INTERNATIONAL RELATIONS DEPARTMENT

The International Relations Department, located at the BUT Rectorate, is the central office responsible for international relations and co-operation. Their employees ensure general agenda associated with mobility programmes and communication with partner universities. Furthermore, the Department organizes together with International Student Club the Welcome Week for incoming students. This event includes language course "Survival Czech – Introduction to Czech Language", cultural awareness of Czech habits, and sport and cultural events. Welcome Week helps incoming students get orientated in the Czech Republic, so the start of their studies is smooth.

The International Relations Department offers incoming students support regarding the administration of the visa process and financial aid for the accommodation. The Department also helps with communication between students and the Student Halls of Residence and Dining Services.

Contacts:

Antonínská 548/1, 601 90 Brno

E international@vutbr.cz

www.vutbr.cz/en/international



FACULTIES – INTERNATIONAL OFFICES

The International offices at faculties can organize their own welcome day providing information regarding academic issues to incoming students:

- Confirmation of Learning Agreement / Traineeship Agreement
- Confirmation of Changes to Learning Agreement / Changes to Traineeship Agreement
- Confirmation of e-Application
- Acceptance Letter
- Confirmation of Study Period
- Transcript of Records
- Assistance with selection of courses

Faculty contacts are available in the following section.



FACULTIES, COURSES, DEGREE STUDIES

Faculty of Architecture

Poříčí 273/5, 639 00 Brno

T +420 541 146 621

E havlovad@fa.vutbr.cz

www.fa.vutbr.cz

LIST OF COURSES: bit.do/courses-fa
DEGREE STUDIES: bit.do/fa-degree

Faculty of Fine Arts

Údolní 244/53, 602 00 Brno

T +420 541 146 804

E ergensova@ffa.vutbr.cz

www.ffa.vutbr.cz

LIST OF COURSES: bit.do/courses-ffa

Faculty of Information Technology

Božetěchova 2, 612 66 Brno

T +420 541 141 265

E studena@fit.vutbr.cz

www.fit.vutbr.cz

LIST OF COURSES: bit.do/courses-fit
DEGREE STUDIES: bit.do/fit-degree

Faculty of Business and Management

Kolejní 2906/4, 612 00 Brno

T +420 541 142 508

E horova@vutbr.cz

www.fbm.vutbr.cz

LIST OF COURSES: bit.do/courses-fbm
DEGREE STUDIES: bit.do/fbm-degree

Faculty of Chemistry

Purkyňova 118, 612 00 Brno

T +420 541 149 346

E sykorova@fch.vutbr.cz

www.fch.vutbr.cz

LIST OF COURSES: bit.do/courses-fch
DEGREE STUDIES: bit.do/fch-degree

Faculty of Mechanical Engineering

Technická 2896/2, 616 69 Brno

T +420 541 142 134

E cupakova@fme.vutbr.cz

www.fme.vutbr.cz

LIST OF COURSES: bit.do/courses-fme
DEGREE STUDIES: bit.do/fme-degree

Faculty of Electrical Engineering and Communication

Technická 3058/10, 616 00 Brno

T +420 541 146 328

E poncova@feec.vutbr.cz

www.feec.vutbr.cz

LIST OF COURSES: bit.do/courses-feec
DEGREE STUDIES: bit.do/feec-degree

Faculty of Civil Engineering

Veveří 331/95, 602 00 Brno

T +420 541 147 133

E pospisilova.a@fce.vutbr.cz

www.fce.vutbr.cz

LIST OF COURSES: bit.do/courses-fce
DEGREE STUDIES: bit.do/fce-degree

Institute of Forensic Engineering

Purkyňova 464/118, 612 00 Brno

T +420 541 148 902

E eva.kosinova@usi.vutbr.cz

www.usi.vutbr.cz

Central European Institute of Technology

Technická 3058/10, 616 00 Brno

T +420 541 146 131

E renata.hritzova@ceitec.vutbr.cz

www.ceitec.vutbr.cz

LIST OF COURSES: bit.do/courses-ceitec
DEGREE STUDIES: bit.do/ceitec-degree

Rectorate

International Relations Department

Antonínská 548/1, 601 90 Brno

T +420 541 145 116

E international@vutbr.cz

www.vutbr.cz/en/international



STUDENTS CLUBS

ISC – International Students Club

- Erasmus student advice service for free time activities
- Established in 2004
- Member of Erasmus Student Network since November 2007
- 600 exchange students per year
- ISC office is located at Faculty of Business and Management

The main intention of the ISC is to provide help concerning everyday matters and possible problems during your stay in Brno. Another part of ISC work is to ensure that the student stay is enjoyable by organizing trips, excursions and other free time activities. ISC helps students integrate in their new environment.

Buddy Programme

Every incoming student has a “buddy”, a local student who helps international students with various things that may occur in their everyday life, such as pick up, general orientation in the city/school/faculty, studies, foreign police, tram card, accommodation, doctors, etc.

www.isc.vutbr.cz
www.facebook.com/isc.vut.brno

BEST Brno Board of European Students of Technology

BEST is a constantly growing non-profit and non-political organisation. 95 Local BEST Groups (LBGs) in 32 countries are creating a growing, well-organised, powerful, young and innovative student network. BEST Brno, the local BEST group, was founded in 2005 as the first of its kind in the Czech Republic at BUT. The mission of BEST is to provide BUT students with additional education, mainly through their participation in international academic trainings, engineering competitions (EBEC Final 2017, which is held in Brno at the beginning of August) and other educational events throughout Europe. Students can also take part in organizing these activities at BUT. Nowadays, BEST Brno has more than fifty members, and hundreds of BUT students take part in international events organized by BEST every year.

www.best.vutbr.cz
www.ebec.cz

TU Brno Racing Team

TU Brno Racing Team was established in the autumn of 2010 with support of the Bosch Diesel Jihlava general partner. In less than nine months the first Formula Student kind of vehicle was built. And the whole car came from BUT workshops. It was called Dragon 1. Most of our team is recruited from students from the Faculty of Mechanical Engineering at BUT Technology. Other students come from Faculty of Electrical Engineering and Communication, Faculty of Business and Management and Faculty of Information Technology. In total, there are about forty team members from different fields. For expert advice and consultation, the team can contact PhD students as well as staff from a variety of university institutes or external experts from automotive industry. The main goal of the team is to design and construct a single seat race car that will be competitive in international events held worldwide.

www.tubrnoracing.cz

Pneumobil Racing Team Brno

Pneumobil is a light one-seat vehicle powered by compressed air from pressure bottles. It can reach a maximum of 40kmph speed. A team of students from the Faculty of Mechanical Engineering at BUT introduced their first pneumobil in 2011. Apart from the faculty, the team is also supported and backed by the NETME Centre. Students have their own workshop at full disposal and they can work with the most modern equipment in the faculty laboratories. In 2017, the Brno team has ranked in the first top ten in the contest of 38 universities from 6 countries.

www.pneumobilvut.wordpress.com



STUDENT DISABILITY SERVICES

The Alfons support centre for students with special needs offers a wide range of services provided by trained psychologists and counsellors. Students with specific learning difficulties, visual, hearing and physical impairments, mental health problems and chronic diseases can specify their interest in the assistance when submitting the e-Application.

Contacts:

Alfons Student Disability Service

Block A04, Kolejní 2905/2, 612 00 Brno

T +420 541 142 929

E alfons@lli.vutbr.cz

www.alfons.vutbr.cz/en

TESTIMONIALS

Everything begins with a decision, an idea of traveling far away from home, of escaping from the routine and going on a new adventure; in one moment you are preparing all your stuff so you can be able to fulfil your dream, and then you realize that you are back home. But you don't need to worry because you will never forget all those experience you lived there, all those faces and stories, all those opportunities, a whole world of new knowledge and cultures just waiting for you.

When people asked me why are you going to the Czech Republic, I didn't know what to say because I had the same question on my mind, but now I realize that it was the best experience of all my life. The Faculty of Mechanical Engineering at BUT has a really high academic level. The facilities they have invite their students to learn, not only in the classroom, but also in the laboratories, because the real knowledge is not only theoretical, but also practical. That way we can see a real impact of all the calculations and formulas we use.

My Erasmus stay was not only about studies. There was time to meet people from other countries, to get to know new cultures and ideas. I realize how huge the world can be, with all those different countries and traditions, but at the same time it's so small that you can find people just like you, and you know that they will always stay in your life no matter the distances. There will always be a part of you in all those countries and friends you met. Now that I'm sitting at home I remember all those moments, and day after day I smile because I'm happy I didn't let this opportunity pass, I'm happy that I escaped from my routine, from my world, to get to know others, of taking the step, and jump and fulfil this dream I had.

The advice I can give to those people who are thinking of escaping from their routine, but are not 100% convinced, is: Don't let your fears win. Yes, you are going to leave your family, friends and classmates, you are going to miss your home, you are going to miss all the people you leave behind and they are going to miss you too, but at the end you will come back. Don't think about all of that and just take the step, jump and begin to live. The opportunity is there, you just need to make the decision and leave all those chains behind. Just say "I'm ready for the Erasmus." I will never regret the decision I made, because now I know that there are a lot of people in this world just like me. There are still people that want to change our planet. Now I know that I'm not alone and we can save this world that is our home. I'm happy now that I took the step. Now it's your turn.

Fernando Pérez Reynaud, Mexico

I had the amazing opportunity of coming to Brno University of Technology as a student intern at the Faculty of Information Technology. If I had to describe it in a few words, I would call it the most memorable journey of my life. Living in a country where the language is unknown to you and where people belong to a different culture altogether could be a difficult task, one could think. However, with such hospitable and friendly people around, and an amazing International Students Club, life can't get any better. The amazing trips, events and parties organized by the ISC, the friendly faculty and staff in all the departments, and the friendly accommodation – when all combined, make up a fantastic experience. When you get to meet and interact with people from all over the world just staying in one place, your perspective about a lot of things changes. To anyone coming here for a semester or year, I assure you that you're going to have the best time of your life here.

Sajal Sehgal, India

I will start by saying that I loved the last year – from the first moment I arrived in Brno and got to the student halls to the last, leaving with a thousand promises of visiting the people I met. About Brno: it's a good taste of the authentic Czech Republic, better than Prague, which is too touristic. I don't want pivo, I want škopek! And about the year: amazing! I made friendships that will last till the end of my life, I learned how to live together with people from lots of cultures and many ways of thinking. I myself became "multi-cultural" in some way. I have to say that all of this was possible thanks to the International Students Club (ISC), always organizing activities, trips and parties for us! If I have to define all I've said in one sentence I would use the very well known "Once Erasmus, always Erasmus". It happened once, but it will always remain in my heart!

Javier Alejandro Rabáanal, Spain





international@vutbr.cz
[facebook.com/BrnoUniversityOfTechnology](https://www.facebook.com/BrnoUniversityOfTechnology)
www.vutbr.cz

Published by Brno University of Technology in 2016.
Editors: International Relations Department, BUT Rectorate.
Design and DTP: Vojtěch Lunga

**STUDY IN
MORAVIA**
CZECH REPUBLIC

A horizontal bar composed of several colored segments: red, orange, yellow, green, blue, and dark blue.