

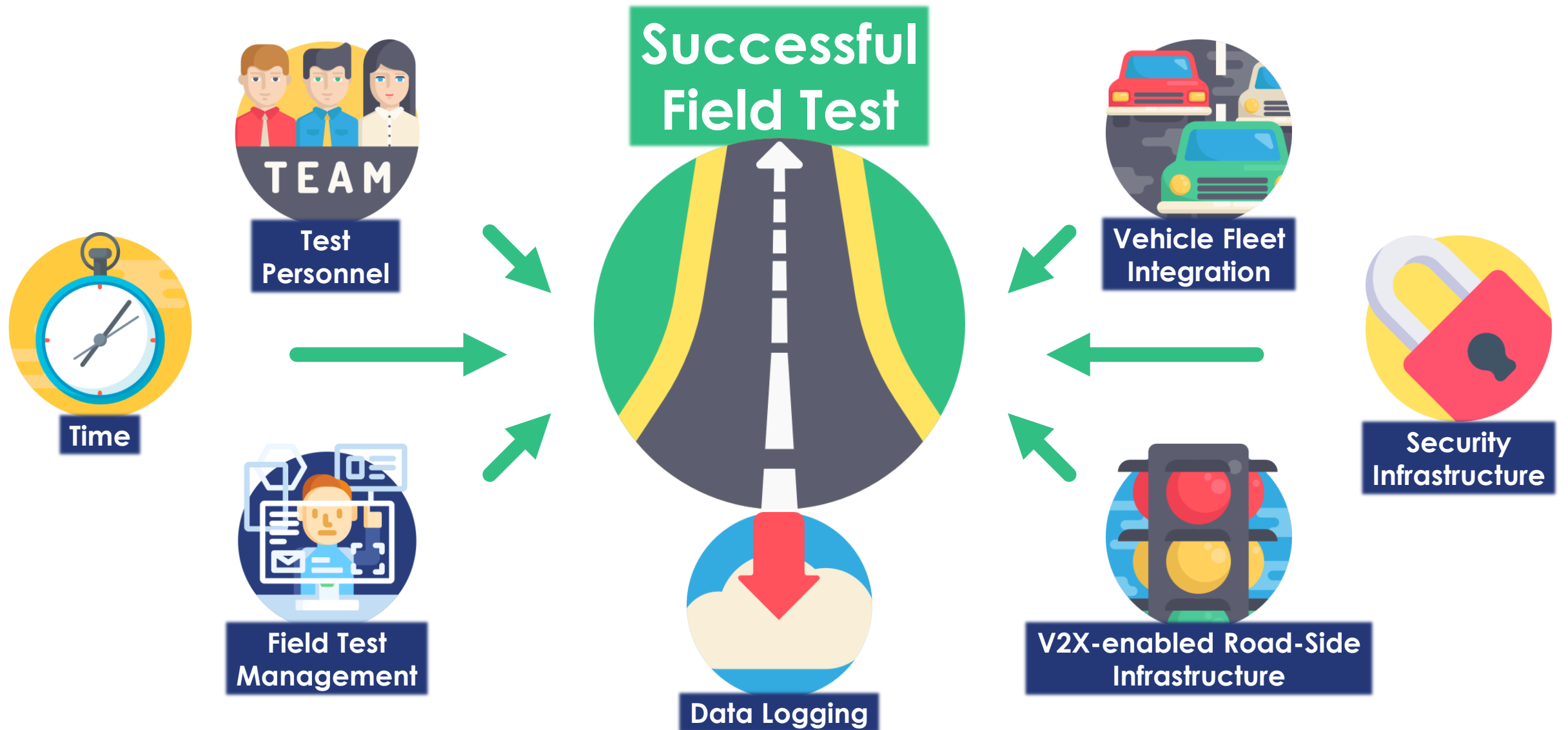


Cooperative and Connected Mobility Field Testing Environment

Václav Mecerod

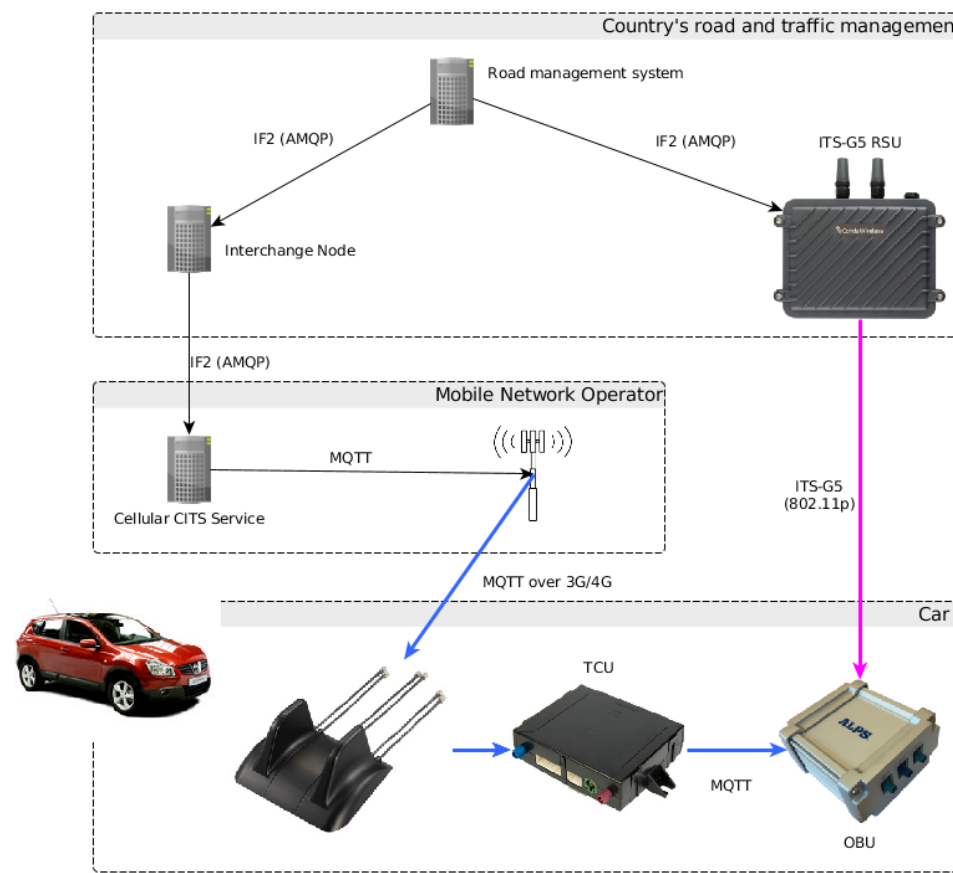
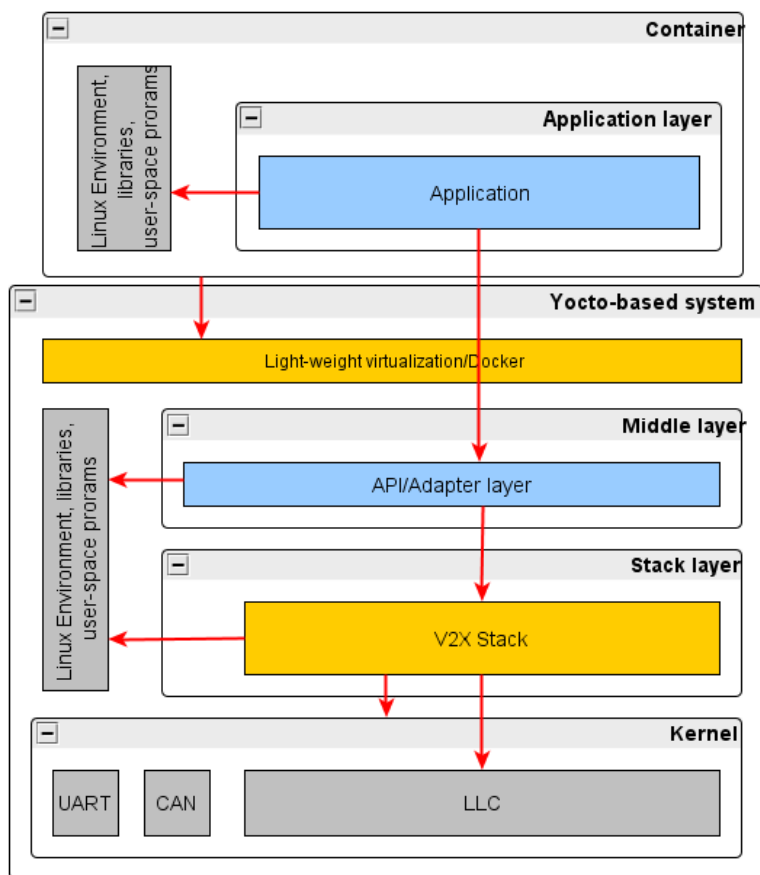
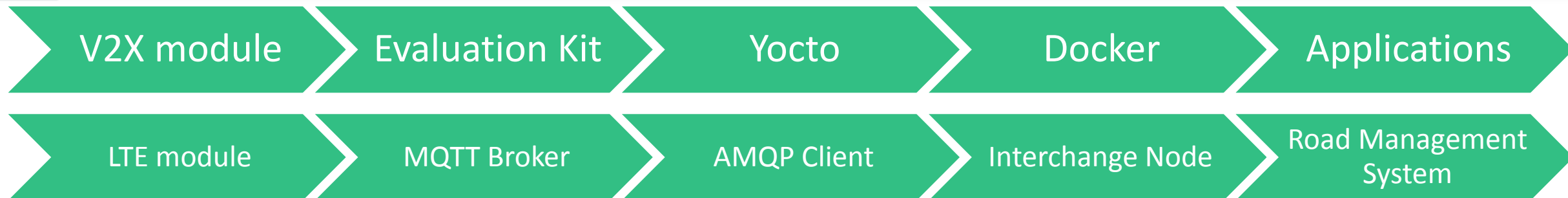


Resource intensive task = Challenge





Facing challenges with modular based approach





Vehicle integration

- V2X Evaluation Kit
 - V2X module
 - GNSS DR
 - Host CPU – V2X Stack
- V2X GNSS combo antenna
- Vehicle CAN sniffing
 - CAN message interpretation
- Inertial Measurement Unit
 - Vehicle dynamics

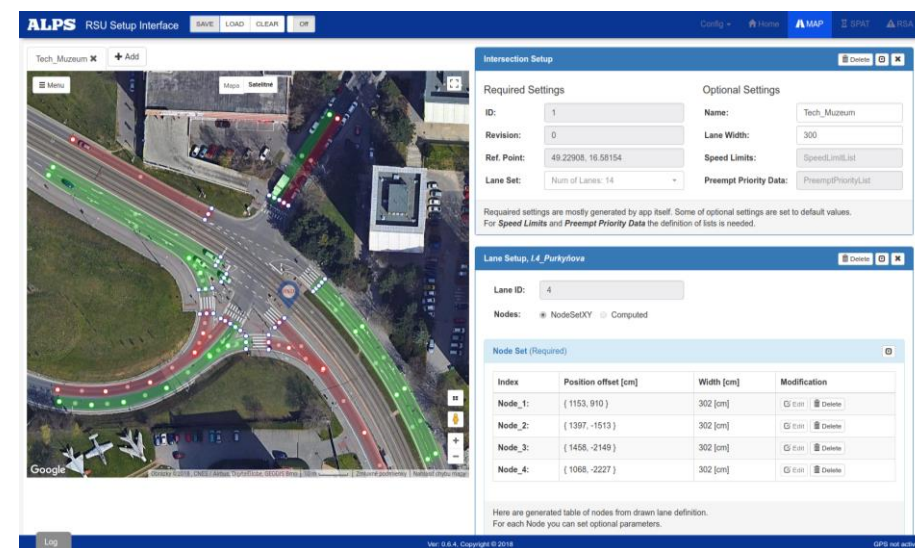
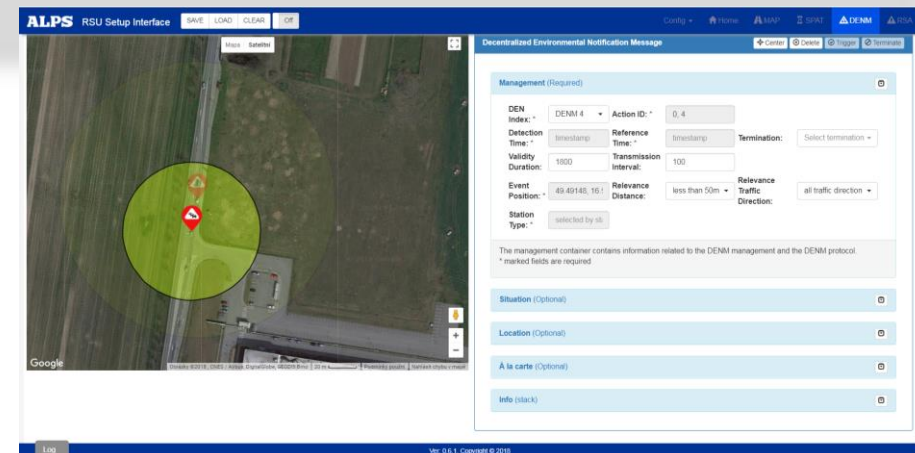


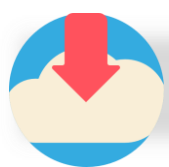


Setup & GO RSU

Short Time-To-Test (EU/US)

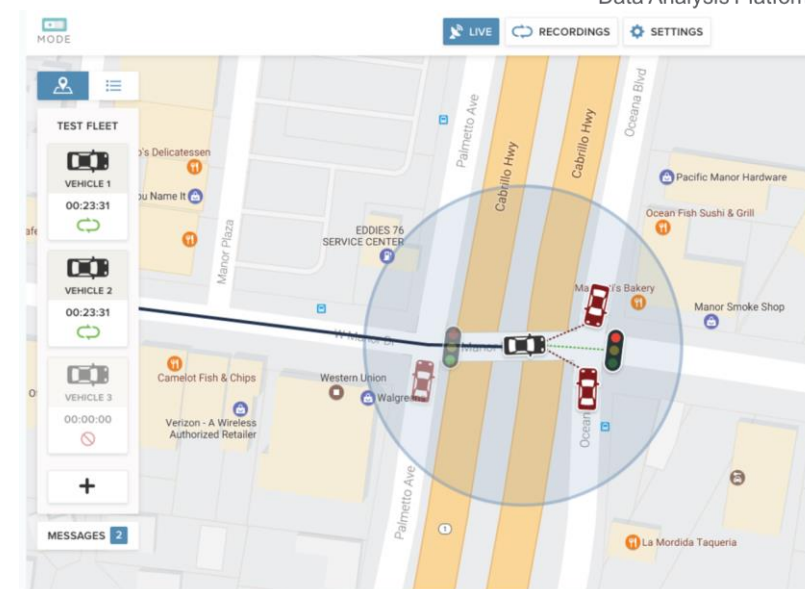
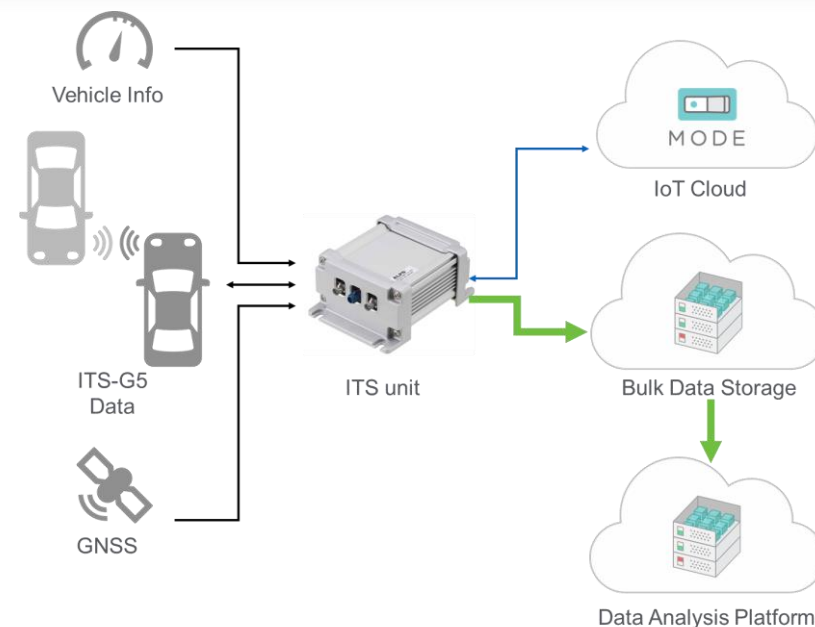
- Simple lane and crossing segments drawing (MAP)
- Detail defining hazardous situation (DENM/RSA)
- Traffic light signal phase and timing definition + synchronization (SPAT)
- In Vehicle Information (IVI / IVS) definition and UI overview





Cloud base logging and presentation

- Data logging
 - Multi vehicle synchronised logging
 - V2X Events and Notifications
 - Custom data logging
 - Cloud disconnect data buffering
- Data presentation & processing
 - Real time situation overview
 - Graphical log replay
- Selective data download



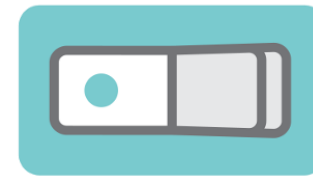


Successful stories

- **Antwerp** March 2019 (BE) – Hybrid + PKI; 12 teams; RWW, IVS, GLOSA
- **Kent & London** October 2018 (UK) –Hybrid; 17 teams; RWW, IVS, GLOSA
- **Reims** April 2018 (F) – ITS-G5 + PKI; 19 teams; RWW, IVS
- **Dordrecht** July 2017 (NL) –ITS-G5; 16 teams; RWW, IVS



ALPS®



MODE





Successful stories

Utilizing the system on real scenario:

The screenshot displays the ALPS RSU Setup Interface. The main window is titled "V2X-RSU Emulation Setup" and contains the following configuration options:

- Emulation Scenario:** 1: RSU Intersection
- Services:** MAP SPaT SPaT Direct DENM
- Simulate Intersection:** Boskovice

Below the configuration panel, a large digital timer displays "00:00:00.0₀₀".

At the bottom of the interface, there is a "Log" button on the left and the text "Ver. 0.8.6, Copyright © 2018" on the right.

<https://youtu.be/T2IBN-2It8s>